



# Chess Chatter

Newsletter of the Port Huron Chess Club

---

**Editor: Lon Rutkofske**      **August 2011**      **Vol.30.**      **Number 8**

---

The **Port Huron Chess Club** meets Thursdays, except holidays, from 6:30-10:00 PM, at Palmer Park Recreation Center, 2829 Armour Street, (NE corner of Garfield Street and Gratiot Ave...1 mile North of the Blue Water Bridge) Port Huron, Michigan. Everyone is welcome. All equipment provided. Website: <http://porthuronchessclub.volasite.com>

---

## **PHCC Trio Compete in Grand Rapids Bottom-Half Tourney**

**Alan Gregg, Noel Bedy, and Lon Rutkofske** ventured to the west side of the state at the end of June in their inaugural exposure to the Grand Rapids Bottom-half Tournament. This MCA event champions a class rating structure which caters to participants under the mid-point scheme prevalent in most USCF Swiss system competitions. In the majority of class tournaments, prizes are awarded by broadly recognized rating categories ( Master = 2200 and above; Expert 2199-2000; Class A = 1999-1800; Class B = 1799-1600, etc...). Bottom-half tournaments narrow their align prize system as follows: Under 2100; Under 2000, Under 1900, Under 1800, etc..., thereby offering a wider range of prizes.



L-R: Lon Rutkofske, Alan Gregg, and Matt Trujillo

Alan responded to some very tough competition with an undefeated 3.5/5 score with a win and 4 draws. Lon and Noel each ended up with 2.5/5. While the results were less than spectacular for Team PHCC, Alan is hoping to put together a real team of 4 to compete in the Michigan Open hosted by Cadillac over the Labor Day Weekend.

If you are interested, drop by the club and pick up a brochure, or better yet, visit the newly remodeled Michigan Chess Association website under construction by West Michigan Chess's resident IT impresario, **Andy Catlin** for details:

<http://www.michess.org/interim/index.html>

## **Members' Games**

*Please send me what you consider your best games, annotated or not, so that I might be able to showcase them. The following games represent contests that have been available at the time of this printing. Email them to me or give them to me personally, if you wish. Majority of analysis done by Fritz 12, unless otherwise indicated.*

### **Gregg,Alan (2001) - Lu,Mandy (1772) [C70] Ruy Lopez**

2011 Bottom Half Grand Rapids, MI (1), 25.06.2011

1.e4 e5 2.Nf3 Nc6 3.Bb5 a6 4.Ba4 Nge7 5.c3 g6 6.d4 exd4 7.cxd4 b5 8.Bb3 Bg7 9.0-0 0-0 10.Nc3 d6 11.h3 Na5 12.Bg5 Qd7 13.Rc1 Bb7 14.Re1 Nxb3 15.Qxb3 Nc6 16.Nd5 Na5 17.Qc3 Nc4 18.Ne7+ Kh8 19.b3 f6 20.bxc4 fxg5 21.Nd5 Bxd5 22.cxd5 g4 23.Ng5 Bh6 24.Ne6 Bxc1 25.Rxc1 Rf7 26.hxg4 Re8 27.f3 Rxe6 28.dxe6 Qxe6 29.d5+ Qe5 30.Qxe5+ dxe5 31.Rc6 Kg7 32.Rxa6 Rf6 33.Ra7 Kg8 34.Rxc7 Ra6 35.Rb7 Rxa2 36.Rxb5 Kg7 37.Rb6 Kh6 38.Rb7 Rd2 39.Kh2 Rd1 40.Re7 g5 41.Rxe5 Kg6 42.Re6+ Kg7 43.d6 Kf7 44.Re7+ Kg6 45.e5 h6 46.d7 Rd2 47.e6 Kf6 48.Re8 1-0

### **Bowersock,Michael (2110) - Gregg,Alan (2001) [E01] Closed Catalan**

2011 Bottom Half Grand Rapids, MI (2), 25.06.2011

"I was a lot worse but never say die." -- Alan 1.d4 d5 2.c4 c6 3.Nf3 Nf6 4.Qc2 e6 5.g3 Nbd7 6.Bg2 Bb4+ 7.Bd2 Qa5 8.0-0 Ne4 9.a3 Nxd2 10.Nbxd2 Be7 11.b4 Qb6 12.e4 dxe4 13.Nxe4 a5 14.c5 Qc7 15.Nfd2 axb4 16.axb4 Rxa1 17.Rxa1 b5 18.Nb3 0-0 19.Na5 Nb8 20.Nd2 Bf6 21.Qe4 Bd7 22.Nf3 Na6 23.Qe1 Nb8 24.Ne5 Rc8 25.Qe4 Be8 26.h4 g6 27.h5 Bg7 28.hxg6 hxg6 29.Kh2 Rd8 30.Naxc6 Nxc6 31.Nxc6 Bxc6 32.Qxc6 Qxc6 33.Bxc6 Rxd4 34.Rb1 Rd2 35.Bxb5 Rxf2+ 36.Kh1 Be5 37.Rb3 Rb2 38.Rxb2 Bxb2 39.Ba6 Bd4 40.Kg2 Kf8 41.Kf3 ½-½

### **Chen,Michael L (2056) - Gregg,Alan (2001) [C66] Ruy Lopez**

2011 Bottom Half Grand Rapids, MI (3), 25.06.2011

1.e4 e5 2.Nf3 Nc6 3.Bb5 Nf6 4.Nc3 d6 5.d4 exd4 6.Nxd4 Bd7 7.0-0 Be7 8.Nxc6 bxc6 9.Bc4 0-0 10.h3 Rb8 11.b3 Ne8 12.Bb2 Bf6 13.Qd2 Be6 14.Bxe6 fxe6 15.Rfe1 Be5 16.Nd1 Qf6 17.Bxe5 Qxe5 18.Nc3 Qf4 19.Qxf4 Rxf4 20.g3 Rf3 21.Ne2 e5 ½-½

### **Gregg,Alan (2001) - Daniel,Aaron (2029) [B01] Scandinavian Defense**

2011 Bottom Half Grand Rapids, MI (4), 26.06.2011

1.e4 d5 2.exd5 Qxd5 3.Nc3 Qa5 4.Nf3 c6 5.d3 Nf6 6.Bd2 Qc7 7.Be2 Bg4 8.h3 Bh5 9.Nh2 Bg6 10.Ng4 Nbd7 11.Nxf6+ Nxf6 12.Bf3 e6 13.Qe2 Be7 14.g3 0-0 15.0-0 Rfe8 16.h4 Bc5 17.Kg2 h6 18.Ne4 Nxe4 19.dxe4 e5 20.h5 Bh7 21.a4 a5 22.Qc4 Qe7 23.Bc3 Kh8 24.Rad1 f6 25.Rd2 Bg8 26.Qe2 b6 27.Rfd1 Red8 28.Bg4 Bf7 29.Rd7 Rxd7 30.Rxd7 Qe8 31.Qd1 Be6 32.Bxe6 Qxe6 33.Rd8+ Rxd8 34.Qxd8+ Kh7 35.Qd3 ½-½

### **Czuhai,Kevin (2200) - Gregg,Alan (2001) [C41] Philidor Defense**

2011 Bottom Half Grand Rapids, MI (5), 26.06.2011

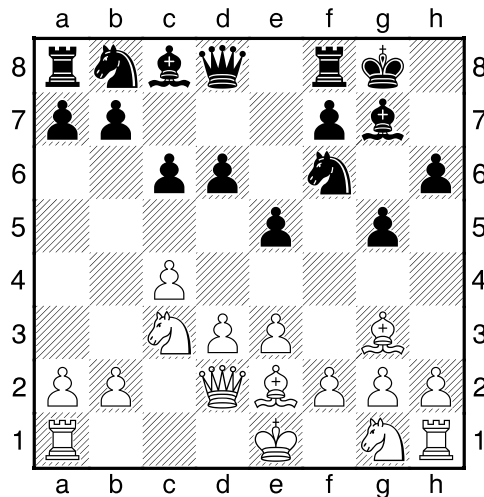
Alan writes that "some of the moves [may not have been entered correctly], but the ending is correct." **1.e4 e5 2.Bc4 d6 3.Nf3 Be7 4.d4 exd4 5.Nxd4 Nf6 6.Nc3 0-0 7.Bb3 Nbd7 8.0-0 Nc5 9.f3 Nxb3 10.axb3 a6 11.Be3 Bd7 12.Qd2 c5 13.Nde2 Bc6 14.Nf4 b5 15.Rfd1 Qc8 16.Nfd5 Bxd5 17.Nxd5 Nxd5 18.Qxd5 Qe6 19.Rd2 Rfc8 20.c3 a5 21.Bf4 Qxd5 22.Rxd5 Ra6 23.Kf2 f6 24.g4 a4 25.c4 bxc4 26.Rxa4 Rb6 27.Rxc4 Rxb3 28.Bxd6 Rxb2+ 29.Kg3 Bxd6+ 30.Rxd6 Rc7 31.h4 h6 32.h5 Kf7 33.Kf4 Ke7 34.Rd5 Rb5 35.Kf5 Rb3 36.f4 Rb5 37.e5 fxe5 38.fxe5 Kf7 39.Rd6 Ke7 40.Kg6 Rb4 41.Rxb4 cxb4 42.Rb6 Rc4 43.Kxg7 Rxg4+ 44.Kxh6 Re4 45.Rb5 b3 46.Rxb3 Rxe5 47.Kg6 Re2 48.Rf3 Rg2+ 49.Kh7 Rg1 50.h6 Rg2 51.Ra3 Kf7 52.Ra7+ Kf8 53.Rg7 Rh2 54.Rg5 Rf2 55.Ra5 Rf3 ½-½**

### Rutkofske,Lon (1850) - Futrell,Jeff (1700) [A22] English Opening

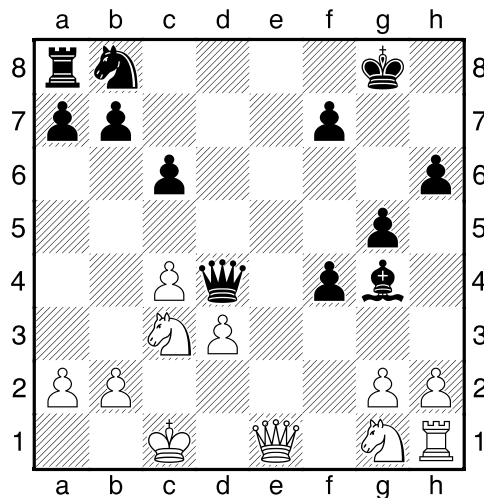
2011 Bottom Half Grand Rapids, MI (1), 25.06.2011

**1.c4 Nf6 2.Nc3 e5 3.d3 c6 4.Bg5 h6 5.Bh4 g5 6.Bg3 d6 7.e3 Bg7 8.Be2 0-0 9.Qd2?**

Diagram



9.Qc2 was the better choice, because it allows for the KN a place to go after Nf3. **9...Re8 10.0-0 d5 11.f4 d4 12.exd4 exf4 13.Bf2 Ng4 14.Bxg4 Bxg4 15.Re1 Rxe1+ 16.Qxe1 Bxd4 17.Bxd4 Qxd4** Diagram



**18.Qe8+?** Probably 18. Qe4 was best here, since the text gives Black's king a step closer to the center. **18...Kg7 19.Qe4 Qxe4 20.Nxe4 Nd7 21.Nf2 Bh5 22.g4 fxe3 23.hxe3 Bg6 24.Nf3**

Re8 25.Kd2 f5 26.d4 Nf6 27.b4 Ne4+ 28.Nxe4 Rxe4 29.Re1 Rxe1 30.Kxe1 Kf6 31.a4 f4 32.gxf4 gxf4 33.a5 Be4 34.Ne5 h5 35.Kf2 h4 36.Ng4+ Kf5 37.Nh2 Bd3 38.d5 cxd5 39.cxd5 Be4 40.d6 Ke6 41.d7 Kxd7 42.Ng4 Kc6 43.Ne5+ Kd5 44.Nd7 0-1

**Adams,Bill (1304) - Rutkofske,Lon (1850) [C02] French Defense: Advanced Var.**

2011 Bottom Half Grand Rapids, MI (2), 25.06.2011

1.e4 e6 2.d4 d5 3.e5 c5 4.Nf3 Nc6 5.a3 Qb6 6.c3 Nh6 7.c4 Nf5 8.cxd5 Ncxd4 9.d6 Qb3 10.Nbd2 Nc2+ 11.Ke2 Qb5+ 12.Nc4 Nxa1 13.Ke1 Qb3 14.Ncd2 Nc2+ 15.Ke2 Nfd4+ 16.Nxd4 Nxd4+ 17.Ke1 Nc2+ 18.Ke2 Qb5+ 19.Kf3 Nd4+ 20.Kf4 Qd7 21.b4 Bxd6 22.Nc4 Be7 23.h4 0-0 24.g4 f6 25.bxc5 fxe5+ 26.Kxe5 Qd5# 0-1

**O'Neil,Brandon (1503) - Rutkofske,Lon (1850) [C11] Classical French**

2011 Bottom Half Grand Rapids, MI (3), 25.06.2011

1.e4 e6 2.Nf3 d5 3.Nc3 Nf6 4.e5 Ng8 5.d4 Bd7 6.Bd3 a6 7.a4 c5 8.dxc5 Bxc5 9.0-0 Nc6 10.Qe2 Nge7 11.Rd1 Qc7 12.Bf4 h6 13.h3 Nb4 14.Rac1 Bc6 15.b3 Rd8 16.Qd2 d4 17.Ne4 Bxe4 18.Bxe4 Na2 19.Ra1 Bb4 20.Qd3 Nc3 21.Rdc1 Nxe4 22.Qxe4 Bc3 23.Rab1 Nc6 24.Bd2 Bxd2 25.Nxd2 Qxe5 26.Qxe5 Nxe5 27.Nc4 Nc6 28.f4 b5 29.axb5 axb5 30.Ne5 Nxe5 31.fxe5 Rd5 32.Rd1 0-0 33.Rd2 Rc8 34.Rbd1 Rxe5 35.Rxd4 Rxc2 36.Rd8+ Kh7 37.R8d7 Rf5 38.Rf1 Rxf1+ 39.Kxf1 Rb2 40.Rxf7 Rxb3 41.Kf2 Kg6 42.Re7 Kf6 43.Rb7 b4 44.Rb6 Rb2+ 45.Kf3 Rb1 46.Rb5 b3 47.Ke2 b2 48.Kd2 Rg1 49.Kc2 Rxc2+ 50.Kb1 Rh2 51.Rb3 Rf2 52.Rc3 g5 53.Rb3 h5 54.Rb8 Rh2 55.Rb3 h4 56.Rf3+ Ke5 57.Re3+ Kf5 58.Rf3+ Ke4 59.Rb3 e5 60.Rb4+ Kf5 61.Rb8 e4 62.Rb5+ Kf4 63.Rb3 e3 64.Rb8 Rg2 65.Rf8+ Kg3 66.Re8 e2 67.Re3+ Kf4 68.Re8 Rg1+ 0-1



L-R Dan Edgerle, Alan Wicking, and Lon Rutkofske

### Wang,Jalen (1798) - Rutkofske,Lon (1850) [C01] French Exchange Var.

2011 Bottom Half Grand Rapids, MI (4), 26.06.2011

1.e4 e6 2.d4 d5 3.exd5 exd5 4.c4 Bb4+ 5.Nc3 Ne7 6.Nf3 0-0 7.Bd3 Bf5 8.0-0 c5 9.Bxf5 Nxf5 10.Nxd5 Nc6 11.a3 Ba5 12.dxc5 Bc7 13.b4 Be5 14.Rb1 Qb8 15.Nxe5 Nxe5 16.Bf4 Re8 17.Re1 f6 18.Bxe5 Rxe5 19.Qg4 Nh6 20.Qh3 Nf7 21.f4 Re8 22.Qd7 Rd8 23.Qe7 Qc8 24.Qc7 Qxc7 25.Nxc7 Rab8 26.Nd5 Rd7 27.Re2 Nh6 28.Rbe1 Kf7 29.Re7+ Rxe7 30.Rxe7+ Kg6 31.Ne3 f5 32.c6 bxc6 33.Rxa7 Rd8 34.Ra6 Rd3 35.Kf2 Kh5 36.Rxc6 Rxa3 37.b5 Ng4+ 38.Nxg4 Kxg4 39.Rc7 g6 40.Rd7 Kxf4 41.b6 Ra2+ 42.Kf1 Rb2 43.c5 Ke3 44.Rd1 g5 45.Rc1 g4 46.c6 f4 47.c7 f3 48.Rc3+ 1-0

### Rutkofske,Lon (1850) - Wickering,Allen (1848) [C20] Unusual K-Pawn

2011 Bottom Half Grand Rapids, MI (5), 26.06.2011

1.e4 e5 2.g3 d5 3.exd5 Qxd5 4.Qf3 Qe6 5.Nc3 f5 6.Qd5 Qf6 7.Bc4 Bd7 8.Qxb7 Qc6 9.Bd5 Qd6 10.Qxa8 c6 11.Bb3 Nf6 12.d3 Qc7 13.Be3 a5 14.Ba7 Bd6 15.Bxb8 Qxb8 16.Qxb8+ Bxb8 17.f3 Ba7 18.0-0-0 Ke7 19.Nge2 h5 20.d4 e4 21.fxe4 fxe4 22.Nf4 Rh6 23.Rhe1 Bg4 24.Rd2 Bf3 25.h3 g5 26.Nfe2 Bb8 27.Ng1 Kd7 28.Nxf3 exf3 29.Re5 g4 30.Rf5 Bxg3 31.Nd1 Ne4 32.Rd3 gxh3 33.Rfxf3 h2 34.Rf1 Rf6 35.Rh1 Bf4+ 36.Kb1 Rg6 37.d5 c5 38.Ba4+ Kd6 39.c4 Rg2 40.Rh3 Nd2+ 41.Ka1 Nxc4 42.Rxh5 Be5 43.Rh6+ Ke7 44.R1xh2 Bxh2 45.Re6+ Kd8 46.Bb3 Nd6 ½-½

### Morabito,Matt - Thomas,Dan [A10] English Opening

2011 London CC Champs London Ontario, CA (9), 14.06.2011

1.Nf3 f5 2.g3 Nf6 3.Bg2 e6 4.c4 Be7 5.Nc3 0-0 6.0-0 Nc6 7.d4 d5 8.cxd5 exd5 9.Bf4 a6 10.Ne5 Nxe5 11.dxe5 Nh5 12.Qxd5+ [Matt commented that perhaps 12.Nd5 was stronger.] 12...Kh8 13.Rad1 c6 14.Qxd8 Bxd8 15.Bf3 Nxf4 16.gxf4 Be6 17.Rd2 Ba5 18.Rd6 Rfe8 19.a3 Bc7 20.Rd2 g5 21.e3 g4 22.Bg2 Bc4 23.Re1 Rad8 24.Red1 h5 25.Rxd8 Rxd8 26.Rxd8+ Bxd8 27.Bf1 Be6 28.Ne2 c5 29.Nc3 b5 30.e4 b4 31.axb4 cxb4 32.Nd5 fxe4 33.Nxb4 a5 34.Nc2 Bb6 35.Kg2 Bb3 36.Ne3 Bd4 37.Nc4 h4 38.Nxa5 Bd5 39.Be2 e3+ 40.Kf1 exf2 41.Bxg4 Bxb2 42.Kxf2 Bc3 43.e6 Kg7 44.Ke3 Kf6 45.Bf3 [Draw Agreed] ½-½

## Brighton slips past the PHCC in July 12<sup>th</sup> Rematch

The rematch with Brighton was a very close affair, hinging on the final game between Matt Trujillo and Alan Gregg. After winning the first game, Alan offered Matt, who had 4 seconds on his clock, a draw because both teams had not really tabulated the results accurately, and Alan, feeling that the position was dead drawn graciously granted Matt a half point rather than win on time. For all intents and purposes, the match was a dead heat. Both matches have been close. Matt, Lon and Ed Mandel met earlier to discuss initiatives for match expansion on a statewide scale and to develop some proposals for the MCA meeting in Cadillac this coming Labor Day. At this point, neither match was USCF rated, but future proposals may recommend such an alternative. Hopefully, the MCA board will have a variety of plans to review.

If things work as planned, we hope to be able to expand match play for the coming Fall season, so stay tuned for an update.

#### Brighton CC

#### Port Huron CC

Matt Trujillo (1814)	.5	vs	Alan Gregg (2001)	1.5
Aaron Jagt (1671)	2.0	vs	Rutkofske, Lon (1850)	0.0
Gene McClure (1573)	2.0	vs	Wingrove, Bill (1694)	0.0
Dave Sybert (1284)	0.0	vs	Roome, Eric (1523)	2.0
Scott Marvel (1270)	1.0	vs	Jones, G. Avery (1519)	1.0
Eric Wright (1261)	0.0	vs	Chan, Jaime (1447)	2.0
Ken Lambdin (913)	<u>2.0</u>	vs	Boucher, Dave(1277)	<u>0.0</u>
	7.5			6.5

**Trujillo, Matt (1814) – Gregg, Alan (2001) [C34] King's Gambit Accepted**

PHCC-Brighton Rematch Warren, MI All the King's Men,(1) 12.07.2011

1.e4 e5 2.f4 exf4 3.Nf3 Nf6 4.e5 Nh5 5.Bc4 d5 6.Bb3 Be6 7.0-0 g6 8.d4 Be7 9.Nc3 a5 10.a4 c5 11.Ne2 c4 12.Ba2 g5 13.c3 Ng7 14.b3 cxb3 15.Qxb3 b6 16.Qb5+ Kf8 17.c4 dxc4 18.Bxc4 h6 19.d5 Bc5+ 20.Kh1 Bf5 21.Bb2 Rh7 22.e6 fxe6 23.dxe6 Nxe6 24.Rad1 Qe8 25.Qb3 Nc6 26.Qc3 Qf7 27.Ned4 Ncxd4 28.Nxd4 Bxd4 29.Qxd4 Nxd4 30.Bxf7 Rxf7 31.Bxd4 Rb8 32.Be5 Rc8 33.Rd6 Bc2 34.Rxh6 Rc4 35.Rxb6 Bxa4 36.Rg6 Rf5 37.Bf6 Kf7 38.Rxg5 Kxf6 0-1

**Gregg, Alan (2001) - Trujillo, Matt (1814) [B27] Sicilian Defense**

PHCC-Brighton Rematch Warren, MI All the King's Men,(2) 12.07.2011

1.e4 c5 2.Nf3 g6 3.c3 d5 4.Bb5+ Bd7 5.Bxd7+ Qxd7 6.Ne5 Qc7 7.Qa4+ Nc6 8.Nxc6 Qxc6 9.Qxc6+ bxc6 10.d3 Bg7 11.Na3 Rb8 12.Rb1 Nh6 13.f3 0-0 14.Be3 d4 15.cxd4 cxd4 16.Bd2 Rfd8 17.Ke2 e5 18.Rhc1 Rdc8 19.Rc5 f6 20.Bxh6 Bxh6 21.Rc2 Kf8 22.Nc4 Ke7 23.b3 Ke6 24.Nb2 Bf8 25.Na4 Bb4 26.Rc4 Ba3 27.Rd1 h6 28.Rd2 Rb4 29.Nb2 Bxb2 30.Rxb4 Bc3 31.Ra4 Bxd2 32.Kxd2 Rc7 33.b4 Kd6 34.Kc2 f5 35.Kb3 fxe4 36.fxe4 Rf7 37.b5 Rf2 38.bxc6 Rd2 39.c7 Kxc7 40.Rxa7+ Kd6 Lost the last few moves played the ending bad the game was a drawn ending I could have won on time ½-½

**Jagt,Aaron (1671) - Rutkofske,Lon (1850) [A10] English Opening**

PHCC-Brighton Rematch Warren, MI All the King's Men (1), 12.07.2011

1.Nf3 f5 2.g3 Nf6 3.Bg2 e6 4.0-0 Be7 5.d3 0-0 6.c4 d6 7.b3 e5 8.Bb2 Nc6 9.Nc3 Qe8 10.Qd2 a6 11.e3 Qh5 12.Nd5 Nxd5 13.cxd5 Na7 14.Rac1 Bd8 15.a4 g5 16.Qc3 Rf7 17.e4 g4 18.Nxe5 Bf6 19.d4 dxe5 20.dxe5 Bg7 21.Rfe1 f4?? 22.gxf4 c6 23.Qe3 Qh6 24.Bd4 Qxf4 25.e6 Be5 26.exf7+ Kxf7 27.Bxa7 Qxh2+ 28.Kf1 Bf4 29.Qd4 g3 30.Rc2 Bh3 31.Bxh3 Qxh3+ 32.Ke2 gxf2 33.Qxf2 Recording was abandoned at this point because each player had less than 5 min. White won a nice ending. 1-0

**Rutkofske,Lon (1850) - Jagt,Aaron (1671) [A17] English Opening**

PHCC-Brighton Rematch Warren, MI All the King's Men (2), 12.07.2011

1.c4 Nf6 2.Nc3 e6 3.g3 Bc5 4.Bg2 0-0 5.Nf3 d5 6.d4 Bb4 7.0-0 dxc4 8.Bg5 h6 9.Bxf6 Qxf6 10.Ne4 Qe7 11.Ne5 Nd7 12.Nxc4 e5 13.a3 Bd6 14.Nexd6 cxd6 15.d5 f5 16.Rc1 b6 17.Qa4 Bb7 18.b4 Nf6 19.Rfd1 Rfc8 20.Ne3 Rxc1 21.Rxc1 g6 22.b5 a6 23.bxa6 Bxa6 24.Qc6 Rc8 25.Qxc8+ Bxc8 26.Rxc8+ Kg7 27.Rc6 Qd8 28.Nc4 b5 29.Rxd6 Qf8 Another time scramble ensued. 0-1

**Wingrove,Bill (1694) - McClure,Gene (1573) [B84] Sicilian Sheveningen**

PHCC-Brighton Rematch Warren, MI All the King's Men (1), 12.07.2011

1.e4 c5 2.Nf3 Nc6 3.d4 cxd4 4.Nxd4 Nf6 5.Nc3 d6 6.Be2 e6 7.Be3 Be7 8.0-0 a6 9.a4 0-0 10.f4 Qc7 11.Bf3 Bd7 12.Kh1 Na5 13.Qe1 Nc4 14.Rb1 Nxe3 15.Qxe3 Rab8 16.e5 dxe5 17.fxe5 Ne8 18.Be4 Bc5 19.Qh3 h6 20.Nf3 Bc6 21.Rbd1 Bxe4 22.Nxe4 Be7 23.Rf2 Qc6 24.Nc3 Qb6 25.Rfd2 Qxb2 26.Nd4 Qb6 27.Nde2 Bb4 28.Rd4 Bc5 29.Rg4 Kh7 30.Ne4 Be7 31.Rf1 Qc7 32.Ng5+ Bxg5 33.Rxg5 Qxc2 34.Ng3 Qd2 35.Rg4 Rc8 36.Rgf4 Rc1 37.Qg4 Rxf1+ 38.Nxf1 Qe1 White loses on time. 0-1

**McClure,Gene (1573) - Wingrove,Bill (1694) [B22] Sicilian Defense**

PHCC-Brighton Rematch Warren, MI All the King's Men (2), 12.07.2011

1.e4 c5 2.c3 d5 3.exd5 Qxd5 4.d4 Nf6 5.Nf3 Bg4 6.Be2 e6 7.0-0 Nc6 8.h3 Bh5 9.Be3 cxd4 10.cxd4 Be7 11.Nc3 Qd8 12.a3 a6 13.Rc1 0-0 14.b4 Rc8 15.Qd2 Bg6

16.Rfd1 h6 17.Qa2 Bd6 18.d5 exd5 19.Nxd5 Nxd5 20.Rxd5 Qe7 21.Rcd1 Rfd8  
22.Bb6 Bc7 23.Bc5 Qe4 24.Rd7 Rxd7 25.Rxd7 Qf5 26.Rd1 Rd8 27.Rxd8+ Bxd8  
28.Nh4 Bxh4 29.Bg4 Qb1+ 30.Qxb1 Bxb1 31.Bc8 Nd8 32.Bb6 Be4 33.f3 Bd5  
34.Bc7 Bf6 Black loses on time. 1-0

**Sybert, Dave (1284) – Roome, Eric (1523) [A03] Bird's Opening**

PHCC-Brighton Rematch Warren, MI All the King's Men (1), 12.07.2011

1. f4 d5 2. Nf3 Nf6 3. e3 g6 4. Be2 Bg7 5. O-O Nbd7 6. d3 O-O 7. Nc3 c6 8. Ne5  
Re8 9. Bf3 Qb6 10. b3 d4 11. Na4 Qc7 12. Nc4 b5 13. Nab2 bxc4 14. Nxc4 dxe3  
15.Bxe3 Nd5 16. d4 Ba6 17. Qd3 N7b6 18. f5 Nxe3 19. Qxe3 Nxc4 20. bxc4 Bxc4  
21.Rfd1 e5 22. c3 exd4 23. Qf2 dxc3 24. Rac1 Rad8 25. Qc2 c5 26. Kh1 Be5 27.  
Qa4 Bf4 28. Ra1 Be2 29. Re1 c2 30. Qxc2 Bxf3 31. gxf3 Be3 32. f6 Bd4 33. Rab1  
Bxf6 34. Qa4 Rxe1+ 35. Rxe1 Bd4 36. Rf1 Qd7 37. Qc4 Qh3 38. a4 Rb8 39. Qe2  
Rb2 40. Qe8+ Kg7 {White Resigns} 0-1

**Roome, Eric (1523) - Sybert, Dave (1284) [D20] Queen's Gambit Accepted**

PHCC-Brighton Rematch Warren, MI All the King's Men (2), 12.07.2011

1. d4 d5 2. c4 dxc4 3. e3 Be6 4. Na3 Qd6 5. Bd2 Qc6 6. Rc1 b5 7. Nf3 f6 8. b3  
Qd6 9. Nxb5 Qb6 10. bxc4 Bd7 11. c5 Qb7 12. Nc3 a6 13. Bc4 Nc6 14. d5 Nb4 15.  
c6 Nd3+ 16. Bxd3 Bxc6 17. dxc6 Qxc6 18. Nb5 Qb6 19. Nxc7+ Kf7 20. Nxa8 Qd8  
21.Qb3+ e6 22. Nc7 Qc8 23. Bc4 Kg6 24. Bxe6 Qd8 25. Qc2+ Kh6 26. e4+ g5 27.  
h4 Kg7 28. hgx5 Be7 29. Bf5 h5 30. Ne6+ {Black Resigns} 1-0

**Marvel,Scott - Jones,Avery (1519) [C30] Kings Gambit Declined**

PHCC Brighton Rematch Warren, MI All the King's Men, 12.07.2011

1.e4 e5 2.f4 Nc6 3.Nf3 Bc5 4.Bc4 h6 5.Nc3 d6 6.h3 Nf6 7.d3 0-0 8.Qe2 Nd4  
9.Nxd4 Bxd4 10.Bd2 c6 11.fxe5 Bxe5 12.0-0-0 Re8 13.Qf3 Be6 14.Bxe6 Rxe6  
15.g4 Nh7 16.Rdf1 Rf6 17.Qg2 b5 18.Nd1 a5 19.Rxf6 Bxf6 20.Bc3 b4 21.Bxf6  
Qxf6 22.Rf1 Qe5 23.Qf2 Rf8 24.Ne3 a4 25.Nc4 Qe7 26.Qd4 Rd8 27.e5 c5 28.exd6  
Qg5+ 29.Qf4 Qxf4+ 30.Rxf4 a3 31.Rf5 axb2+ 32.Kxb2 Nf6 33.Rxc5 Nd7 34.Rb5  
Kf8 White loses on time. 0-1

**Jones,Avery (1519) - Marvel,Scott (1270) [A46] Torre System**

PHCC-Brighton Rematch Warren, MI All the King's Men (2), 12.07.2011

1.d4 Nf6 2.Nf3 c5 3.Nc3 cxd4 4.Qxd4 Nc6 5.Qd1 d5 6.Be3 Bg4 7.Nd4 e5 8.Nxc6  
bxc6 9.Bg5 Be7 10.g3 h6 11.Bxf6 Bxf6 12.Bg2 Qb6 13.0-0 Qxb2 14.Na4 Qb4  
15.c3 Qd6 16.Rb1 0-0 17.Qc2 e4 18.e3 Rab8 19.Qd2 Rxb1 20.Rxb1 Rb8  
21.Rxb8+ Qxb8 22.Qc2 Qb5 23.h3 Be2 24.h4 Bd3 25.Qb3 Qxb3 26.axb3 Bc2  
27.Nc5 Bxc3 At this point both score sheets were a mess, and Avery resigned about  
10 moves later. 0-1

**Chan,Jaime (1477) - Wright,Eric (1261) [A85] Dutch Defense**

PHCC-Brighton Rematch Warren, MI All the King's Men (1), 12.07.2011

1.c4 f5 2.d4 Nf6 3.Bg5 e6 4.Nc3 Bb4 5.a3 Bxc3+ 6.bxc3 c6 7.Nf3 d5 8.e3 0-0  
9.Bd3 Nbd7 10.c5 Qc7 11.Bf4 Qd8 12.0-0 b6 13.cxb6 axb6 14.Ne5 Bb7 15.Qf3  
Nxe5 16.Bxe5 Ng4 17.Bf4 Ba6 18.Bxa6 Rxa6 19.h3 Nf6 20.Rfb1 Nd7 21.Qg3 Qa8  
22.Rb3 c5 23.Bd6 Rf7 24.dxc5 Nxc5 25.Bxc5 bxc5 26.Rab1 Qc6 27.Rb8+ Rf8  
28.R8b7 g6 29.Qe5 Qxb7 30.Rxb7 Rf7 31.Rb8+ Rf8 32.Rxf8+ Kxf8 33.Qb8+ 1-0

**Wright,Eric (1261) - Chan,Jaime (1477) [A01] Nimzovitch/Larsen Opening**

PHCC-Brighton Rematch Warren, MI All the King's Men (2), 12.07.2011

1.b3 e5 2.Bb2 Nc6 3.e3 d5 4.Bb5 Bd6 5.f4 f6 6.Nh3 Nge7 7.0-0 Bf5 8.g4 Bg6 9.f5  
Bf7 10.d4 e4 11.Na3 a6 12.Bxc6+ Nxc6 13.Qe2 Qe7 14.Nb1 h5 15.Nd2 0-0-0

16.c4 Bb4 17.cxd5 Rxd5 18.Nf4 Rdd8 19.Ng6 Bxg6 20.fxg6 h4 21.a3 Bd6 22.Nc4 Qe8 23.d5 Ne7 24.Rac1 Qxg6 25.Nxd6+ Rxd6 26.h3 Rxd5 27.Qc4 Rd7 28.Rfd1 Rhd8 29.Rxd7 Rxd7 30.a4 Nc6 31.Qg8+ Rd8 32.Qe6+ Kb8 33.Qc4 Qg5 34.Bd4 Qd5 35.Qc3 Rd7 36.Rd1 Nxd4 37.Rxd4 Qf7 38.Rxd7 Qxd7 39.Kf2 Kc8 40.Qc4 Qd2+ 41.Kf1 Qd3+ 42.Qxd3 exd3 0-1

**Boucher,Dave (1277) - Lambdin,Ken (913) [B09] Pirc Defense-Austrian Attack**

PHCC-Brighton Rematch Warren, MI All the King's Men (1), 12.07.2011

1.e4 d6 2.d4 Nf6 3.Nc3 g6 4.f4 Bg7 5.Nf3 Bg4 6.h3 Bxf3 7.Qxf3 Nc6 8.Be3 e5 9.d5 Ne7 10.g4 exf4 11.Bxf4 Nd7 12.0-0-0 Ne5 13.Qe3 Qd7 14.Qd2 Nf3 15.Qe3 Ne5 16.Bh6 Bxh6 17.Qxh6 0-0-0 18.Bb5 c6 19.dxc6 N7xc6 20.Nd5 Qe6 21.Qe3 Kb8 22.Qb3 Na5 23.Qb4 Nec6 24.Bxc6 Nxc6 25.Qa4 Rc8 26.Rd3 Rhe8 27.Re1 f5 28.Ra3 fxg4 29.Nb4 a6 30.Nd5 gxh3 31.Qb3 a5 32.Qg3 b5 33.Rh1 b4 34.Rd3 Qxe4 35.Qxd6+ Kb7 36.Qd7+ Kb8 37.Rh3 Red8 38.Nf6 Qf4+ 0-1

**Lambdin,Ken (913) - Boucher,Dave (1277) [C01] French Defense Exchange Var.**

PHCC-Brighton Rematch Warren, MI All the King's Men (2), 12.07.2011

1.e4 e6 2.Nf3 d5 3.exd5 Qxd5 4.d4 c5 5.Nc3 Qd8 6.Bf4 cxd4 7.Qxd4 Qxd4 8.Nxd4 Nd7 9.Ncb5 Bb4+ 10.Bd2 Bxd2+ 11.Kxd2 Ke7 12.Re1 a6 13.Nc7 Ra7 14.Nd5+ Kd8 15.Nc3 Ngf6 16.f3 Ke7 17.Bc4 Nb6 18.Bd3 Rd8 19.Nf5+ Kf8 20.Ne3 Nbd5 21.Nexd5 Nxd5 22.Nxd5 Rxd5 23.c4 Rd8 24.Kc3 b6 25.Re2 Rc7 26.b4 a5 27.a3 axb4+ 28.axb4 b5 29.c5 Rcd7 30.Rd2 Bb7 31.Rhd1 Bc6 32.Be4 Rxd2 33.Rxd2 Rc8 34.Bxc6 Rxc6 35.Rd8+ Ke7 36.Rb8 Ra6 37.Rxb5 Ra2 38.Rb7+ Kd8 39.g4 Rxh2 40.Rxf7 Rh3 41.Kd3 e5 42.Ke4 Ke8 43.Rxg7 Kf8 44.Rd7 Ke8 45.Rd5 h5 46.gxh5 Rxh5 47.Rxe5+ 1-0

## PHCC Rating List

The following list represents only current members of the Port Huron Chess Club. Current USCF ratings were used for members that had them, in order to establish the initial club rating list. The USCF rating format is used as the basis for calculating our club rating list. Members that had no USCF ratings are given a provisional rating based on their performances against regular club members who had USCF ratings. Club rated events will use these ratings for pairing purposes.

**PHCC Rating List as of 7/21/11**

<u>Name</u>	<u>Rating</u>
Gregg, Alan	1943
Rutkofske, Lon	1871
Morabito, Matt	1760
Broyles, Tom	1736
Wingrove, Bill	1694
Bedy, Noel	1603
Oriel, Paul	1569
Jones, G. Avery	1548
Chan, Jaime	1502
Boucher, Dave	1404
Krazyca, Jay	1000
Sienkiewicz, John	1000

**PHCC Speed Rating List as of 7/21/11**

<u>Name</u>	<u>Rating</u>
Rutkofske, Lon	1949
Morabito, Matt	1668
Wingrove, Bill	1625
Jones, G. Avery	1485
Bedy, Noel	1440

**USCF Ratings as of 7/21/11**

<u>Name</u>	<u>Rating</u>
Gregg, Alan	2017
Rutkofske, Lon	1833
Broyles, Tom	1737
Morabito, Matt	1725
Wingrove, Bill	1694
Jones, G. Avery	1519
Chan, Jaime	1519
Bedy, Noel	1423
Boucher, Dave	1277

## Calendar of Events:

**First Thursday of Each Month** - Chess Clinics– 6:30 to 8:00 PM - \$7.50 per person

**July 21** – G/90 Double Round Robin Bughouse Tournament. EF:\$ 5.00/\$2.00 Teams organized based on balancing rating differences. Prizes based on entries.

**August – 8 thru 29<sup>th</sup>** 4 Rd Mini-Swiss G/90. EF: \$10:00/\$5.00 Prizes based on entries - one game per meeting date.(USCF Rated)

## **Crosstable correction from June Issue**

2011 April Round Robin							
#	Name	Rtng	Post	Rd 1	Rd 2	Rd 3	Tot
1	Lonnie Rutkofske	1891	1879	W3	W4	L2	2.0
2	G Avery Jones	1443	1531	L4	W3	W1	2.0
3	Paul Oriel	1650	1636	L1	L2	W4	1.0
4	Noel Bedy	1619	1609	W2	L1	L3	1.0

2011 April Round Robin- Corrected							
#	Name	Rtng	Post	Rd 1	Rd 2	Rd 3	Tot
1	Lonnie Rutkofske	1891	1879	L3	W4	W2	2.0
2	G Avery Jones	1443	1531	W4	W3	L1	2.0
3	Paul Oriel	1650	1636	W1	L2	L4	1.0
4	Noel Bedy	1619	1609	L2	L1	W3	1.0

## Dues News:

The Port Huron Chess Club will begin to collect dues for the coming year. While dues are not required for anyone interested in playing at the club, they are required for those competing in tournament play. Annual Dues are \$20.00 for adults and \$10.00 for those under 19. Dues funds are used to offset miscellaneous expenses not funded by the Recreation Department.

Membership lapses: Eric Roome; Bob Fiedler; Michael Petty; Mark Willard, Joel Dean; Dale Berthen; Mike Jachcinski; Chris Scholfield; Mark Fitchett