

# Chess Chatter

Newsletter of the Port Huron Chess Club

---

*Chess Chatter*

Vol.28. Number 1

October 2009

---

## Stimulus Plan for PHCC

Well, it seems that everyone is getting into the act, so why not the PHCC? Although we probably won't qualify for Federal or State assistance, **Betty Dunn** and **the Port Huron Recreation Department** have always been supportive to our efforts, and have graciously consented to fund attempts to revitalize the PHCC by purchasing affiliate memberships to the **Michigan Chess Association** and the **United States Chess Federation**, not to mention their longstanding commitment in providing chess supplies and a playing site for us year round. We have also received encouragement and help from **Jaime Chan** and **Tom Broyles** from the Saturday Chess Club in St. Clair and hope that this partnership may grow stronger and encourage a heftier turnout at both clubs.

**Alan Gregg** from Croswell has been very vocal about his vision of a reinvigorated PHCC. In addition to proposing monthly tournaments, Alan has been working on developing a website for the PHCC. Alan has been very active in tournament competition, playing in Michigan and Canada, and presently is in England to compete in the Isle of Jersey Chess Tournament. He recently returned from a strong outing in the Upper Peninsula Championships tying for second. Our September Mini-Swiss was mildly successful as a field of seven matched wits in our first tournament since 2006. We have been fortunate in having a number of committed players from the glorious past who have helped us stumble along over the past through years: **Phil Willard**, **Bill Wingrove**, **Eric Roome**, **Matt Morabito**, and **Bob Duncan**. These players have not only kept the "dream" alive, but have been a physical force that has prevented the PHCC from suffering the fate of so many chess clubs that have faded into oblivion. This group represents the "hard core" of local chess enthusiasts that has kept the PHCC on life support through these lean years, hoping against hope that resurrection will occur.

We trust that this undying spirit will be rewarded with our new stimulus plan. With our own website, email membership notification of coming events, a commitment to monthly tournament play, a regular schedule of USCF rated events, a timely club newsletter, continued support from the Recreation Department, and local partnerships that hopefully will bring in new members, we look to a promising future for all those that embrace the Royal Game.

## September Mini-Swiss

The Port Huron Chess Club hosted its first tournament since 2006 on Thursday, September 19<sup>th</sup>, 2009. **Lon Rutkofske** served as Tournament Director for this year's first event. Hopefully, other club members will serve as TD in future events, so that no one will have to serve double duty in having to direct and play at the same time. The club plans to host similar events on the second Thursday of each month through December (October 8<sup>th</sup>, November 12<sup>th</sup>, and December 10<sup>th</sup>) 2009. These tournaments will permit entry to all those who want to play, but after January 2010, such events will require PHCC annual membership (\$2.00 for those over 18, and \$1.00 for all others). Anyone that wants to play chess is welcome at the club, even if they do not wish to participate in tournament play.

Lon captured first prize followed by a three way tie for second, between Bill Wingrove, Chris Scholfield, and Cody Trombley of St. Clair.

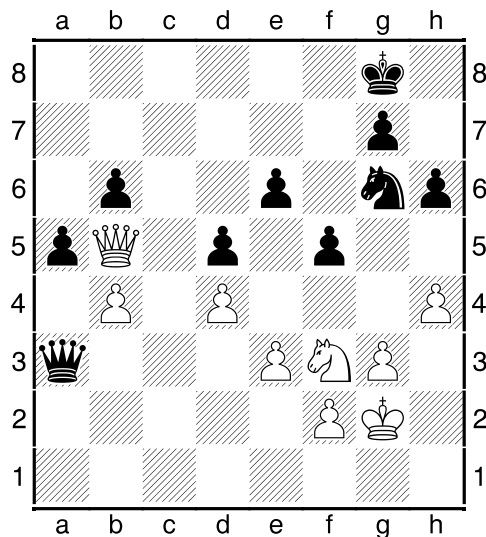
**Results: September 2009 PHCC Mini Swiss**

Name	Rtg-Pre/Post	Rd 1	Rd 2	Rd 3	Prizes
1 Lon Rutkofske	1912/1923	W4	B7	W2	\$5
2 Bill Wingrove	1694/1707	B5	W3	B1	\$2
3 Chris Scholfield*	1553/1552	W6	B2	B7	\$2
6 Cody Trombley	1349/1366	B3	bye	W4	\$2
4 Dale Berthen*	1552/1540	B1	W5	B6	
5 Phil Willard	1551/1525	W2	B4	bye	
7 Nathan Mireau	1050/1048	bye	W1	W3	

\*Initial ratings assigned by tournament director, all others are USCF ratings  
 ( W= White B= Black...W4 means the player had white against player 4)

*This is a crucial position that took place in Round 2 of the tournament. Nathan had all the winning chances. There are several solutions. White to play and win. Fortunately for Lon, Nathan was very short on time and lost in the ending. Email your analysis to me ([ishking@aol.com](mailto:ishking@aol.com)) and I will include them in the next issue.*

**Rutkofske, Lon**



**Mireau, Nathan**  
**White to move and win!**

**New PHCC Rating List as of 9/20/09**

Name	Rating
Gregg, Alan	1981
Rutkofske, Lon	1923
Wingrove, Bill	1707
Scholfield, Chris	1552

Berthen, Dale	1540
Willard, Phil	1525
Roome, Eric	1523

## Members' Games

### **(1) Gregg, Alan (1987) - Catlin, Andy (1920) [B27] 2009 U.P. Open Marquette, MI (2), 15.08.2009**

[All notes by Allan Gregg, except where indicated by James Sawaski and Andy Catlin]. I had never played Andy before, so I played with some restraint. Games can be found at <http://www.westmichiganchess.com>  
**1.e4 c5 2.Nf3 g6 3.c3 Bg7 4.d4 cxd4 5.cxd4 d5** This was a surprise. I decided to play a closed game

**6.e5** [**6.exd5** is a more ambitious way to play, and leads to a very different kind of middlegame. - Catlin]

**6...Bg4 7.Be2 e6 8.0-0 Ne7 9.Nbd2** At this stage I am playing a very tight game. I wanted to exchange my knight for the white bishop and keep a knight on f3. Black is already equal.

**9...Nbc6 10.h3 Bxf3 11.Nxf3 0-0 12.b3 a5** I had no clue what Andy was up to so decided to give him the queenside. I was going for kingside. [?! - Catlin **12...Qb6** was the only move I could find after in my database of games between strong masters. - Catlin]

**13.g4 Qb6** [Either **13...f6** ; or **13...f5** is OK for Black.]

**14.Be3 Rfc8 15.Qd2 a4 16.Rab1 axb3 17.Rxb3 Qa5 18.Rxb7** This gets rid of the queenside pawns and the queens. I came under a little pressure, but I thought everything was ok.

**18...Qxd2 19.Nxd2 Rxa2 20.Rd1 f6 21.exf6 Bxf6 22.Kf1** This move holds everything together.

**22...g5 23.Nf3** [**23.Ne4! dxe4 24.Bc4** would hurt psychologically and be extremely difficult to overcome. - Sawaski]

**23...Na5** A start of a plan for Black that goes badly wrong. [? - Sawaski, Catlin] [**23...h6** is best. I didn't like **24.h4 gxh4 25.Bxh6** but it's probably better than what happened in the game. - Catlin]

**24.Rb6 Rcc2** [? - Catlin] Rooks on the seventh normally win but

**25.Bd3** Chess blindness--I just missed this simple move. After any other White idea, Black is fine. Now, it's a fast downhill. - Catlin

**25...Rcb2 26.Rxb2 Rxb2 27.Bxg5 Kf7 28.Bxf6** [**28.Bc1!?** -- followed by **29.g5** is also strong for White.]

**28...Kxf6 29.Bxh7 Nb3 30.Kg2 Nc6 31.h4** I am going to lose the d pawn, so decided on a kingside attack.

**31...Kg7 32.Bb1** I wanted to keep rooks on the board. With minor pieces there is always the possibility of

sacrificing for the last pawns. [[32.Rb1!](#) and Black can basically resign. - Sawaski]

[32...Nbx4](#) [[32...Ncx4!](#) is less tenacious because White has [33.Ne5!](#) ]

[33.Nxd4](#) [Nxd4](#) [34.Rxd4](#) [Rxb1](#) [35.h5](#) Best. I need a space for my king when Black starts checking.

[35...Kh6](#) [[35...Kf6](#) MIGHT have made it tougher for White. - Sawaski.]

[36.f4](#) Now all I need to do is get my king to h4 with advantage.

[36...Rb3](#) [37.Rd2](#) [Rb4](#) [38.Kg3](#) [Rb3+](#) [39.Kh4](#) [Rb1](#) [40.g5+](#) [Kg7](#) [41.Ra2](#) [Rh1+](#) [42.Kg4](#) [Rg1+](#) [43.Kf3](#) [Rf1+](#) [44.Ke3](#) [Re1+](#) [45.Kf2](#) Black's position is now hopeless.

[45...Rh1](#) [46.Ra7+](#) [Kg8](#) [47.h6](#) [Rh5](#) [48.Re7](#) 1-0

[*Alan Gregg*] (2) Garrison, Ray (1808) - Gregg, Alan (1987) [C33]

2009 U.P. Open Marquette, MI (4), 16.08.2009

[*Alan Gregg*]

Playing Ray is always interesting.

[1.f4](#) [e5](#) I decided on the Froms Gambit, but was hoping for a King's Gambit.

[2.e4](#) [exf4](#) I always take the pawn.

[3.Bc4](#) [d5](#) [4.Bxd5](#) [Nf6](#) [5.Bb3](#) I now had a blind spot which could cost me the game.

[5...Bd6](#) [[5...Nxe4](#) is best.]

[6.Nc3](#) I now realized I had problems, so caution went out the window.

[6...g5](#) [7.Nf3](#) [Bg4](#) [8.e5](#) [Bxf3](#) [[8...Bxe5](#) [9.Bxf7+](#) ]

[9.Qxf3](#) [Bxe5](#) [10.Qxb7](#) I totally missed this move but played the next few moves quickly as if I knew what I was doing.

[10...Nbd7](#) [11.0-0](#) [0-0](#) [[11...Bd4+](#) is best.]

[12.d3](#) [Bd4+](#) [13.Kh1](#) I now had one plan. If the game went to a ending, I was lost so I had to make the most of the next few moves. My intention was to harass the queen and hope. I already had my eyes on h2.

[13...Rb8](#) [14.Qa6](#) I don't like this move for White. [[14.Qf3](#) [Ne5](#) [15.Qe2](#) with all to play for.]

[14...Rb6](#) [15.Qxa7](#) [Ng4](#) Now Ray makes the losing move. He was only looking at h2.

[16.Ne4](#) [[16.h3](#) is best and White is still in game. After looking at everything, the position is unclear. I can win the exchange or take a perpetual check]

**16...Nxb2** [! - Andy]

**17.c3** [**17.Qxb6** is White's best move. I should still win, but it is messy.]

**17...Rh6 18.cxd4** There's no good move here.

**18...Nf3# 0-1**

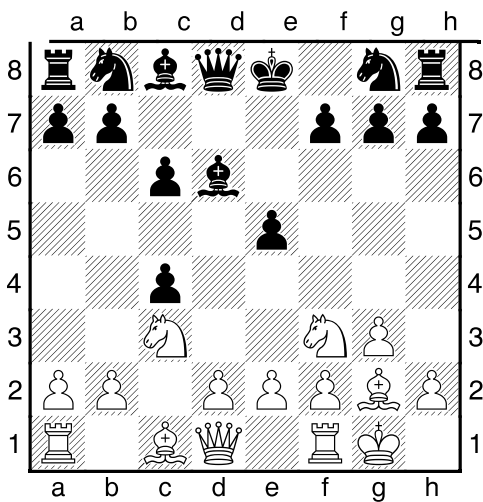
### Rutkofske,Lonnie(1912) – Chan,Jaime (1501)

#### [A20] English Opening

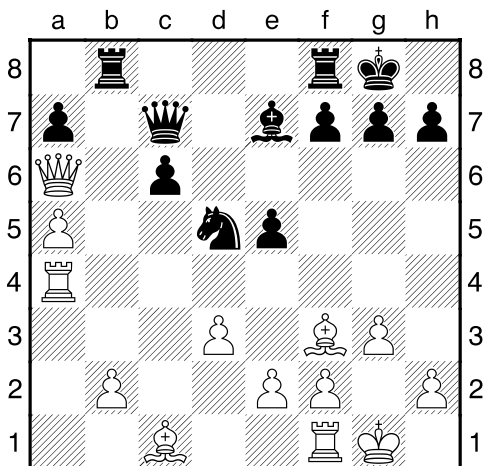
Casual Game in 60 St. Clair,MI 19.09.2009

1.c4 [1.d4] 1...e5 2.g3 c6 3.Bg2 d5 4.Nc3 dxc4 5.Nf3 Bd6

6.0-0 Diagram

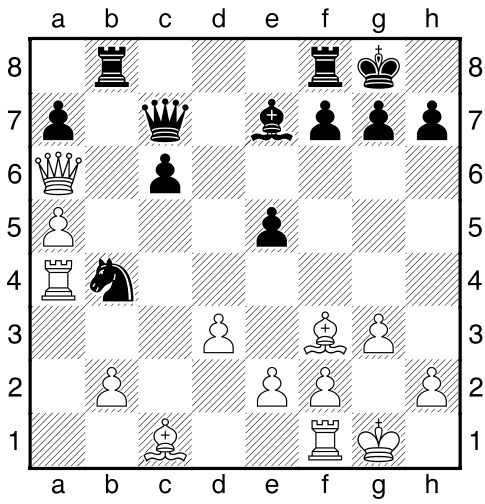


6...Nf6 7.Qc2 Bg4 8.Ne4 Nxe4 9.Qxe4 Bxf3 10.Bxf3 Nd7  
11.Qxc4 0-0 12.d3 Rc8 13.a4 Nb6 14.Qb3 Be7 15.a5 Nd5  
16.Qxb7 Qc7 17.Qa6 Rb8 18.Ra4 Diagram

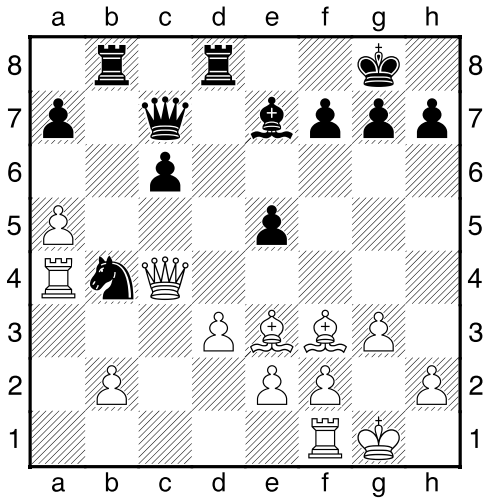


a b c d e f g h

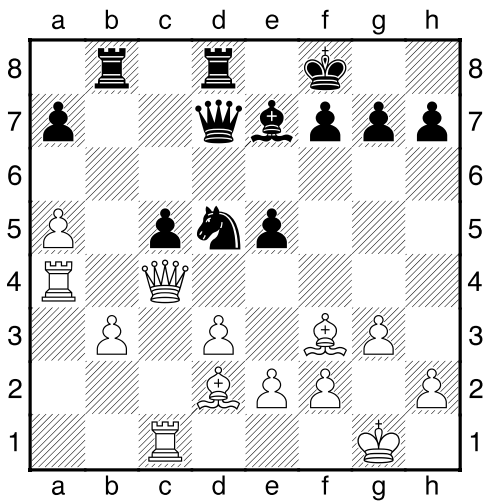
18...Nb4 Diagram



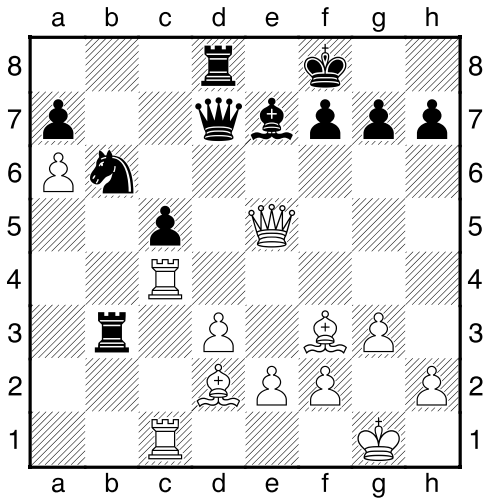
19.Qc4 Rfd8 20.Be3 Diagram



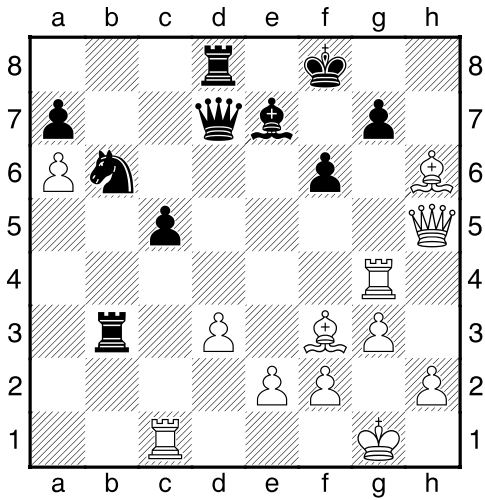
20...c5 21.Rc1 Qd7 22.b3 Nd5 23.Bd2 Kf8 Diagram



24.Qe4 Nf6 25.Qxe5 Rxb3 26.Rac4 Nd5 27.a6 Nb6 Diagram



28.Rg4 f6 29.Qh5 h6 30.Bxh6 Diagram



1-0

