



Chess Chatter

Newsletter of the Port Huron Chess Club

Editor: Lon Rutkofske

Vol.28. Number 3

December 2009

Saturday Chess in St. Clair gives area chess players options

If you are the kind of chessnut that I am, and you appreciate opportunities to test your meddle against as many players as possible, then Saturday Chess at the Berger King in St. Clair is just the venue for you. Blue Water Area chess enthusiasts are treated with the dual opportunity to snack on pawns and burgers at the same time - my kind of simul!! Originally a collaborative venture of **Jaime Chan** and **Tom Broyles** to foster scholastic chess in the environs of St. Clair, Saturday Chess emerged as a mainstay of the local chess scene, moving from place to place in the downtown area, to find its home at the Burger King. Starting at 10:00 a.m. to...whenever, the location has been a draw for not only junior, but many adult players as well, offering a wide range of skill levels, and a casual, friendly playing atmosphere. It's probably one of the few chess sites that permit you to release your frustrations by drowning your sorrows in a BK value meal should you come up short in your game. **Jaime** maintains a website dedicated to Saturday Chess (<http://www.saturdaychess.com/>) and his consistent updates alert players of changes they need to be aware of. If you don't have any pressing engagements on a lazy Saturday morning, why don't you pack up your set and board and venture across the boardwalk in St. Clair and play a game or two. Everyone is welcome and you don't even need to bring a snack!

Readers' Comments:

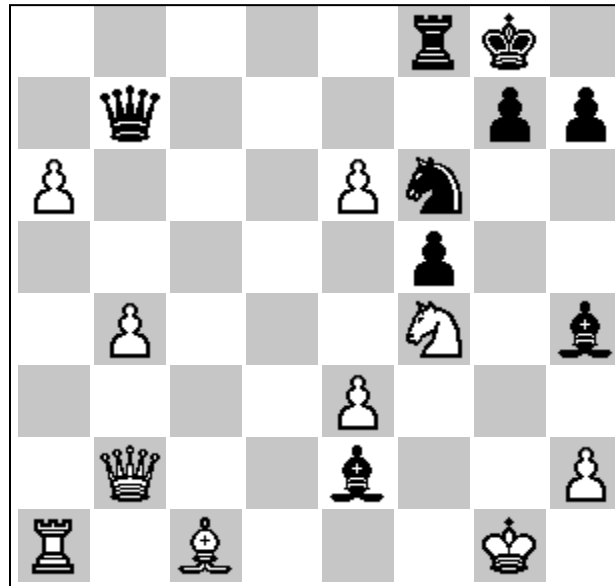
Tom Broyles took the time to respond to my November article "How Can I Improve My Chess" via email and posits his perspectives on what it takes to elevate your play to the next level. He writes:

"I believe my chess improved when I got a better understanding of endgame play. What positions can win; what positions can draw. [The]Most common mistake I think players make—conceding a game prematurely to a higher rated player. They feel they are behind and so the higher rated player is bound to win. The treat of a draw is a strong tool to use against a higher rated player because it is so distasteful. The higher rated player may even take an "unsound chance" to avoid the draw."

I can certainly concur with Tom's assessment on this point, since he uses this ploy effectively on me!

Dale Berthen emailed me this piece after a recent contest with his brother, Aaron:

Dale Berthen



Aaron Berthen

Black to play and mate in 5. Solution at the end of the Games section.

November Quad

In his debut performance of the season, **T.D. Bill Wingrove** performed his duties heroically, although the turnout was a tad underwhelming, with many of the regulars pulling vanishing acts. **Michael Jachcinski** and his mom made the trek from Macomb to participate in our November fete, but were disappointed that they weren't able to share the antics of many of our "colorful" cadre of chess hounds. Bill kept the tournament moving along, and we finished in time for Michael to get back home to catch a good night's sleep for school. Thanks to all who participated. Probably the most notable anomaly of the evening was **Phil Willard's** annihilation of **Lon Rutkofske** in the final round...it took the "Amazing Willardore" just 19 moves to pulverize Lon into submission. You can share this debacle in the Games section.

Port Huron Chess Club November Quad 11-12-09

#	Name	Rtng	Rd 1	Rd 2	Rd 3	Total
		<i>Pre/Post</i>				
1.	Lon Rutkofske	1928/1902	W4	W2	L3	2.0
2.	Dale Berthern	1540/1537	D3	L1	W4	1.5
3.	Phil Willard	1514/1514	D2	L4	W1	1.5
4.	Michale Jachcinski	987/1016	L1	W3	L2	1.0

*Initial ratings assigned by tournament director, all others are club ratings.

PHCC Rating List

The following list represents a realignment and update after the November Quad. It identifies only current members of the Port Huron Chess Club. Current USCF ratings were used for members that had them, to construct the initial list. Members that had no USCF ratings were given a provisional rating based on their performances against regular club members who had USCF ratings. From this point forward, club rated events will use these ratings for pairing purposes.

New PHCC Rating List as of 11/12/09

<u>Name</u>	<u>Rating</u>
Gregg, Alan	1981
Rutkofske, Lon	1902
Wingrove, Bill	1688
Berthen, Dale	1537
Willard, Phil	1514
Scholfield, Chris	1503
Jachcinski, Michael	1016
Tuttle, Aaron	498

USCF Ratings as of 11/13/09

<u>Name</u>	<u>Rating</u>
Gregg, Alan	1981
Rutkofske, Lon	1912
Morabito, Matt	1725
Wingrove, Bill	1694
Willard, Phil	1551
Trombley, Cody	1349
Boucher, Dave	1277
Mireau, Nathan	1050
Jachcinski, Michael	987

Members' Games

Please send me what you consider your best games, annotated or not, so that I might be able to showcase them. The following games represent contests that have been available at the time of this printing. Email them to me or give them to me personally if you wish. The first four games are FIDE rated games.

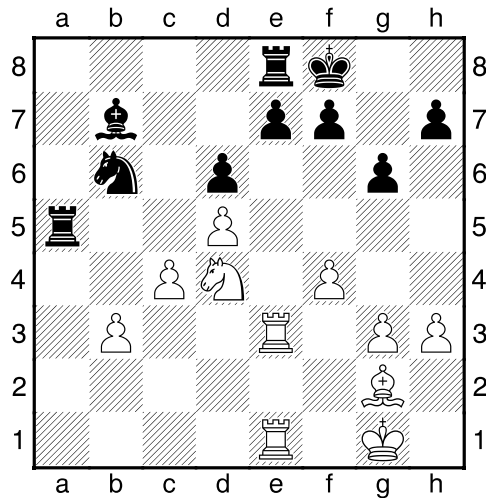
Alan has been in England for the past two months and has sent a couple of games from the tournament he is playing in. He appears to be the "drawing master" since many of his games end up that way. This game is a particularly good outing for him and he nets the full point for his steady efforts.

Gregg,Alan 2140 – Morcom,Hew 1965

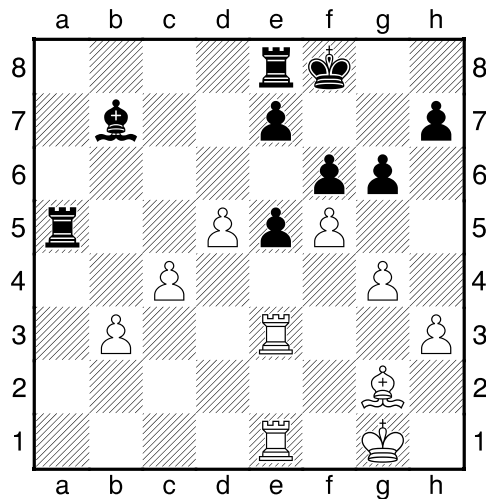
Najdorf Sicilian [B91]

Game in 120 minutes Gurnsey International , 23.10.2009 Rd 6

1.e4 c5 2.Nf3 d6 3.d4 cxd4 4.Nxd4 Nf6 5.Nc3 a6 6.g3 g6 7.Bg2 Bg7 8.0-0 0-0 9.h3 Nbd7 10.Nde2 Rb8 11.a4 b6 12.Be3 Bb7 13.Qd2 Ne5 14.b3 Qc7 15.Rac1 Rbc8 16.Bh6 Rfd8 17.Bxg7 Kxg7 18.Nd5 Nxd5 19.exd5 b5 20.axb5 axb5 21.Qd4 Qc5 22.f4 Qxd4+ 23.Nxd4 Nd7 24.Nxb5 Rc5 25.c4 Nb6 26.Nd4 Rdc8 27.Rce1 Kf8 28.Re3 Ra5 29.Rfe1 Re8 Diagram



30.f5 Nd7 31.g4 Ne5 32.Nf3 f6 33.Nxe5 dxe5 Diagram



34.fxg6 hxg6 35.g5 Kg7 36.gxf6+ exf6 37.b4 Ra4 38.Rb3 Rc8 39.c5 Rd8 40.c6 Bc8 41.b5 1-0

These next three games represent speed games I played online recently. The second game against Fw is a particular favorite of mine, since it was against a much higher rated player, and was a solidly played game. The first game represents a game where I tried to push the limits and was taken to task by Fiepsi. The final contest of this blitz trilogy represents an all out banzi-pawnstorm attack, which actually succeeded in surprising a foe that had vanquished me several times previously. My screen name is Ishking and I compete on Playchess.com, a German site administered by the folks that make the computer program, Fritz.

Fiepsi (1731) – Ishking (1666) Queen Pawn Opening [D02]

Rated game, 5m + 0s Main Playing Hall, 14.09.2009

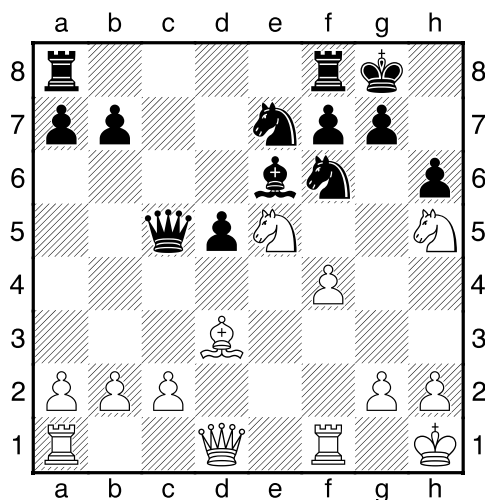
1.d4 d5 2.Nf3 e6 3.Nbd2 g6 4.h4 c5 5.e3 a6 6.h5 g5 7.dxc5 Bxc5 8.Nb3 Be7 9.Ne5 Nc6 10.Ng4 h6 11.Bd3 f5 12.Nh2 e5 13.Bd2 e4 14.Be2 Nf6 15.Bc3 0-0 16.g4 fxg4 17.Nxg4 Nxg4 18.Bxg4 Bxg4 19.Qxg4 Qd7 20.Qg2 Qf5 21.0-0-0 Qxf2 22.Qh3 Qf5 23.Qh2 Bd6 24.Qxd6 Rad8 25.Qc7 Rd7 26.Qg3 Qf3 27.Qh3 g4 28.Qh4 Qxe3+ 29.Bd2 Ishking resigns 1-0

Fw. (1877) – Ishking (1524) [C01]

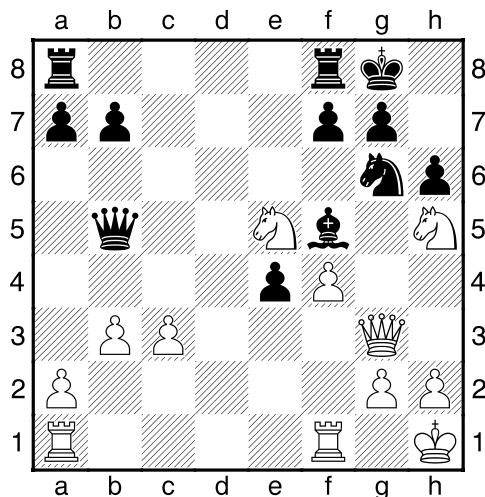
French Exchange Variation

Rated game, 5m + 0s Main Playing Hall, 11.11.2009

1.e4 e6 2.d4 d5 3.exd5 exd5 4.Bd3 Bd6 5.Ne2 Ne7 6.Bf4 Be6 7.0-0 0-0 8.Nd2 c6 9.Nf3 Qc7 10.Bxd6 Qxd6 11.Ng3 h6 12.Ne5 Nd7 13.f4 c5 14.dxc5 Qxc5+ 15.Kh1 Nf6 16.Nh5 Diagram



16...Ne4 17.Qe1 Bf5 18.Bxe4 dxe4 19.Qg3 Ng6 20.c3 Qb5 21.b3 Diagram



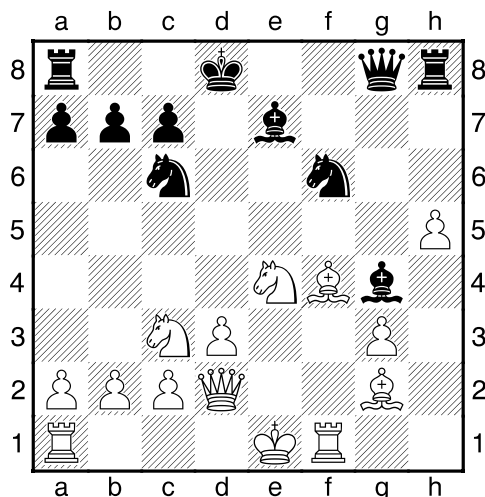
21...Qe2 [21...Qe2] 22.Nxg7 [Fritz 11: 22.Kxg7 Nc4 23.Rad8 Ne3 24.Qxh5 Rad1 25.Kh7 c4 26.Rd3 Qe1 27.b6 Rd2 28.Rfd8 Nd5 29.Qh4 g3 30.Qh3 Rxd3 31.exd3 Kg1 -2.86/19] 22...Kxg7 23.Rae1 Qxa2 [23...Qxa2] 24.h4 [Fritz 11: 24.Qxb3 Xe3 25.Qb5 Rb1 26.Qc5 c4 27.a6 h4 28.Kh7 Rfd1 29.Ne7+ Rxb7+ 30.Bc8+ Rbb1 31.Be6+ Rb7 32.Rad8+ Rdb1 33.Rg8+ -3.64/19] 24...Kh7 25.Nc4 Rg8 [25...Rad8 Fritz 11: 26.Rd3 Qh2 27.Ne7 g4 28.Qxh2 Kxh2 29.Be6 f5 30.Bxb3 Rf4 31.Rxc3 Rfxe4 32.Nd5 g5 33.Rd8 Kg3 34.a5 Kg4 35.Ne3+ -4.39/17] 26.Nd6 Nxh4 27.Qxh4 [27.Qh2 Fritz 11: 27...Ra1 28.Qb2 Nxf7 29.Qxg2 Qxg2 30.Xxg2 Rg1 31.Qd2 Ne5 32.e3 Rg3 33.e2 Re1 34.Be4 Kh2+ 35.Rad8 Rgg1+ 36.Nf5 Ng4+ 37.Rd6+ Ne5+ 38.Ne3 -6.00/18] 27...Qxg2# (Lag: Av=0.99s, max=1.9s) 0-1

Hubislav (1643) - Ishking (1481)

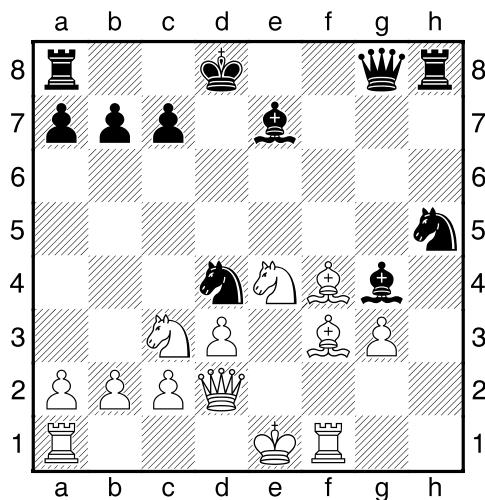
King's Indian Attack [A04]

Rated game, 5m + 0s Main Playing Hall, 10.11.2009

1.Nf3 e6 2.d3 Be7 3.g3 g5 4.Bg2 g4 5.Nfd2 f5 6.e4 h5 7.h3 f4 8.hxg4 fxg3 9.fxg3 Nf6 10.gxh5 d5
11.Nc3 Kd7 12.exd5 Qg8 13.dxe6+ Kd8 14.Nde4 Bxe6 15.Bf4 Nc6 16.Qd2 Bg4 17.Rf1 Diagram



17...Nhx5 18.Bf3 Nd4 Diagram

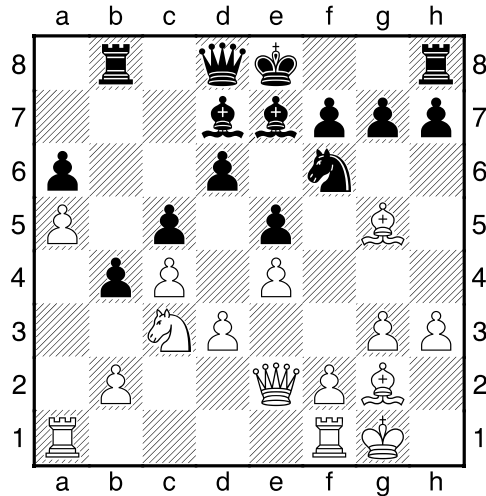


19.Be2 Nxf4 20.Rxf4 Rh1+ 21.Rf1 Rxf1+ 22.Bxf1 Nf3+ 0-1

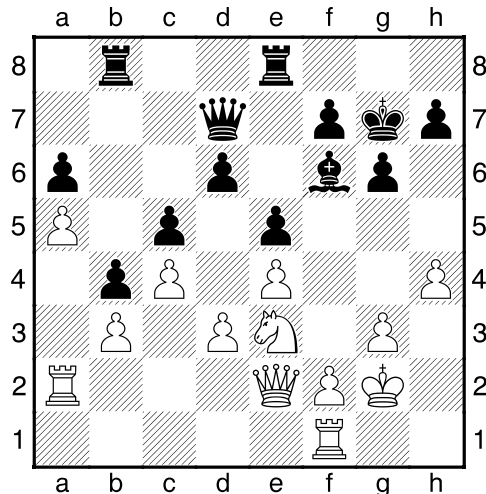
Rutkofske,Lon 1928 – Jachcinski,Michael 987 English Opening

Rd 1 – G30 Port Huron Chess Club, November Quad – 12.11.2009

1.c4 e5 2.g3 Nf6 3.Bg2 d6 4.Nc3 Bd7 5.e4 Nc6 6.h3 Nd4 7.Nge2 Nxe2 8.Qxe2 c5 9.0-0 Be7 10.d3 a6
11.a4 Rb8 12.Bg5 b5 13.a5 b4 Diagram



14.Bxf6 [Fritz 11: 2) 14.Nd1 0-0 15.Bd2 g6 16.Ne3 Qc7 17.h4 h5 18.b3 Kg7 19.Bf3 Rh8 20.Rfc1 Bc6 21.Rc2 Qd7 22.Nd5 Nxd5 -0.08/17] 14...Bxf6 15.Nd5 [My goal here was to maintain a centralized N. Once the white squared Bishops were exchanged, my N would enjoy an unassailable post at d5. Knights enjoy a particular advantage over bishops in closed games.]0-0 16.b3 Bc6 17.Ne3 Re8 18.Ra2 Bd7 19.Kh2 g6 20.h4 Kg7 21.Bh3 Bxh3 22.Kxh3 Qd7+ 23.Kg2 Diagram



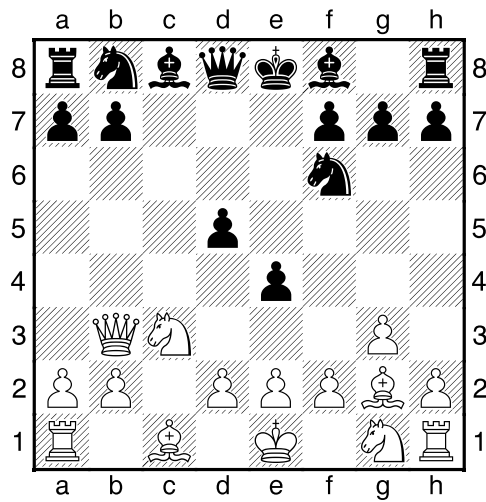
23...Kg8[23...,Rh8! was far stronger, aiming at play on the h-file.The text move wastes a good Kg7 move.] 24.Nd5 Bd8 25.h5 Re6 26.Qg4 Rb7 27.Rh1 Re8 28.Qf3 Re6 29.Qe3 gxh5 30.Rxh5 Rg6 31.Rf5 f6 32.Ra1 Qg7 33.Rh1 Rg5 34.Qf3 Rxf5 35.Qxf5 Rd7 36.Rh4 Rf7 37.Rg4 Qxg4 38.Qxg4+ Rg7 39.Qe6+ Kh8 40.Qxd6 Rg8 41.Nxf6 Bxf6 42.Qxf6+ Rg7 43.Qxa6 h5 44.Qf6 Kh7 45.a6 1-0

Rutkofske,Lon 1928 – Berthen,Dale 1540

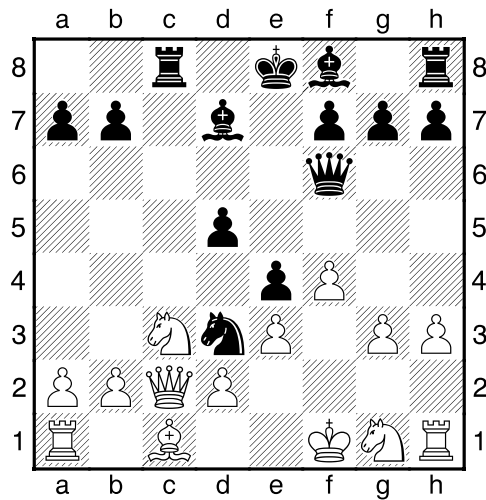
English Opening

Rd 2 – G30 Port Huron Chess Club, November Quad – 12.11.2009

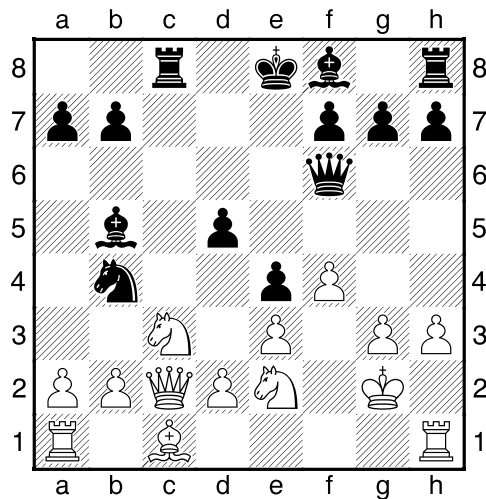
1.g3 e5 2.Bg2 Nf6 3.c4 c6 4.Nc3 d5 5.cxd5 cxd5 6.Qb3 e4 Diagram



7.e3 Na6 8.Qb5+ Bd7 9.Qb3 Nc5 10.Qc2 Rc8 11.Bh3 Nd3+ 12.Kf1 Ng4 13.Bxg4 Bxg4 14.h3 Qf6 15.f4 Bd7 Diagram



16.Nge2 Bb5 17.Kg2 Nb4 Diagram



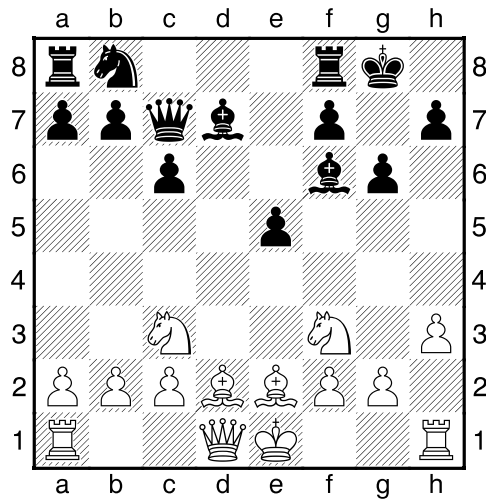
18.Qb3 Bxe2 [Fritz 11: 1) 18...Bxe2 19.Nxe2 Qc6 20.Nc3 Rd8 21.a3 Nd3 22.Qb5 Qxb5 23.Nxb5 a6 24.Nc3 Be7 25.b4 f5 26.Rb1 d4 27.exd4 Rxd4 -1.10/16 ; Fritz 11: 2) 18...Bc6 19.Nd4 Qd6 20.Qa3 a6 21.Qa5 Nd3 22.Nxc6 bxc6 23.Nd1 Rb8 24.Nf2 Nxb2 25.Rb1 Nc4 26.Rxb8+ -0.87/15] 19.Nxe2 Nc2 20.Nc3 d4 21.Qxc2 dxc3 22.bxc3 Qc6 23.Qb3 Bd6 24.Ba3 0-0 1-0(time)

I refer to this as the Armageddon Game! I mistakenly touched my Queen Bishop on move 6, and it was all down hill afterward, although I did miss a chance to get back into the game on move 16 when I should have played 16....,Re5!

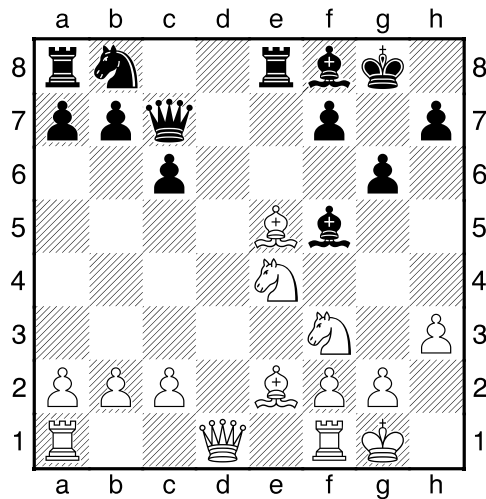
Willard,Phil 1514 - Rutkofske,Lon 1928 King's Indian Defense

Rd 3 - G30 Port Huron Chess Club, November Quad - 12.11.2009

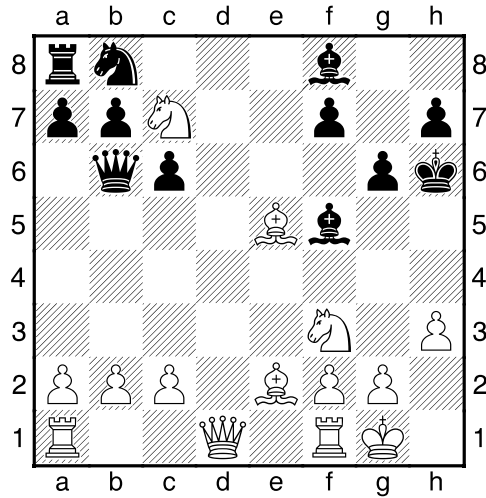
1.d4 Nf6 2.Nc3 g6 3.e4 d6 4.h3 Bg7 5.e5 dxe5 6.dxe5 Bd7 7.exf6 Bxf6 8.Nf3 0-0 9.Bd2 e5 10.Bb5 c6 11.Be2 Qc7 Diagram



12.Bg5 Bg7 13.0-0 Re8 14.Ne4 Bf5 15.Bf6 Bf8 16.Bxe5 Diagram



16...Qb6 17.Nf6+ Kg7 18.Nxe8+ Kh6 19.Nc7 Diagram



1-0

Solution to the Berthen Brothers' problem: 1..., Bf2+; 2. Kf2, Qf3+; 3. Ke1, Qf1+; 4.Kd2, Qd1+; 5. Kc3, Ne5 or Rd8 mate!!

The **Port Huron Chess Club** meets Thursdays, except holidays, from 6:30-10:00 PM, at Palmer Park Recreation Center, 2829 Armour Street, (NE corner of Garfield Street and Gratiot Ave...1 mile North of the Blue Water Bridge) Port Huron, Michigan. Everyone is welcome. All equipment provided.