



# Chess Chatter

Newsletter of the Port Huron Chess Club

---

**Editor: Lon Rutkofske    December 2011    Vol.30. Number 12**

---

The **Port Huron Chess Club** meets Thursdays, except holidays, from 6:30-10:00 PM, at Palmer Park Recreation Center, 2829 Armour Street, (NE corner of Garfield Street and Gratiot Ave...1 mile North of the Blue Water Bridge) Port Huron, Michigan. Everyone is welcome. All equipment provided. Website: <http://porthuronchessclub.volasite.com>

---

## Morabito becomes Top Tom in the 15<sup>th</sup> Duncan's Turkey Gobbler Tournament



**Matt Morabito** stuffed the competition on his way to his first Turkey Gobbler's Championship. This holiday tournament, now hosted about every three years, was created and first directed by club cofounder, Bob Duncan, in 1981. Matt upended a host of fellow birds to win the 15<sup>th</sup> edition of this fine feathered fete, gobbling up the competition like so many grains of corn. What is unusual and unpredictable about this event (Illustrating the devious, twisted mind of its creator, Bob Duncan) is that it is really a number of smaller tournaments, combined into one larger event...sort of like a Thanksgiving dinner...with lots of side dishes.

The first two rounds consisted of three chess problems of differing difficulty and value. Participants could only submit two of the three problem solutions to score points. The higher the point value, the more

difficult the problem. In addition to this, these problems had to be worked out before the tournament was over, during the break time between rounds or games.

Round 3 consisted of a double round robin style G/5 Handicap blitz tournament where the lower rated player got a time advantage of up to two minutes based on the point spread of the ratings. Remarkably, Alan Gregg, just returning from a lengthy stint in England, managed to win 5.5/6 points being two minutes down in each of 6 games!

The 4<sup>th</sup> round featured a 3 round tournament where pairings were selected by random draw, and players had a chance of playing the same player in all three rounds. Playing both the Black and the White pieces in each round participants were forced to draw cards that featured a selection of unusual/bizarre openings, most beginning 7-10 moves into the game.

The final stanza revealed a three round mini-Swiss of predetermined endgame positions with colors being selected by toss. This wild setting was enhanced with a G/5 blitz time control and provided the spicy finale, akin to a satisfying piece of pumpkin pie that tops off a grand Thanksgiving meal.

In addition to the usual names that traditionally populate the club crosstable, you no doubt have come across the name: **Andrew Smith**. Although he might be a distant relation of the Smith family that may have participated in the inaugural Thanksgiving meal, Andrew's foray into the chess soup provided by Duncan's event had to be both exciting and frustrating. As a relative chess-novice, he was an extremely good sport and obviously eager to learn more about this royal game, albeit probably in a saner setting. Many thanks to Champion, **Matt Morabito**, for his generous sponsorship of Andrew. We hope to see more of him and welcome him to one of the more eccentric, wacky experiences provided by the Port Huron Chess Club.

**2011 PHCC Turkey Gobbler's Tournament – November 17, 2011**

#	Name	Rating	Rd 1*	Rd 2*	Rd 3*	Rd 4*	Rd 5*	Tot.
1	Morabito, Matt	1668	0.0	0.0	4.0	5.5	3.0	12.5
2.	Gregg, Alan	1971	0.0	0.0	5.5	3.5	2.0	11.0
3.	Wingrove, Bill	1588	0.0	0.0	2.5	3.0	1.0	6.5
4.	Smith, Andrew	Unr.	0.0	0.0	0.0	0.0	0.0	0.0

\* Each round had an independent value based on its type:

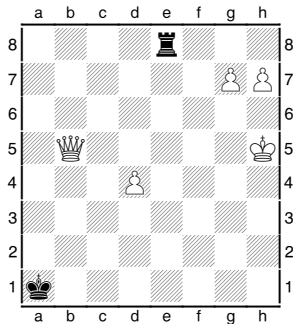
**Rounds 1 and 2 were chess problems ( worth 2,3, or 4 pts... See Below).**

**Round 3 = G/5 handicap Double RR.**

**Round 4 = G/10 Mini-Swiss-pre-determined openings by lot.**

**Round 5 = G/5 Endgame Mini-Swiss , color and positions selected by lot.**

**Can you solve these problems from the Turkey Gobbler? Solutions on page 8?**

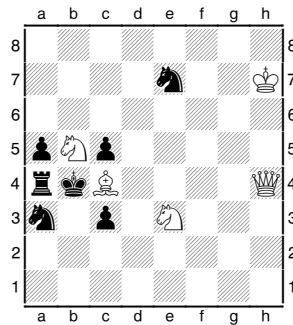


**Problem 1 : 3 pts**

White to mate in 3.

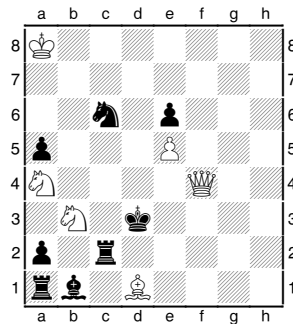
**Problem 2 : 4 pts**

White to mate in 4.



**Problem 3 : 2 pts**

White to mate in 2.



## New Format for PHCC Championships which begin January 12, 2012

In response to numerous requests, and as a result of low registration numbers, the 2012 Club Championship Tournament will be in a round-robin format. This means all participants will play everyone in a single open section. Colors will be determined by USCF Round Robin tables, and as a result, the TD can publish a full set of pairings after round 1 registrations are complete enabling all players to know the pairing and color assignments for all rounds following the first round. The shortcoming of this type of pairing system is that the number of players will determine the number of rounds, and may lengthen the tournament.

One round will be scheduled for each Thursday with the Thursday following the final round reserved for make ups.

A significant change in this year's event will be that games between players with valid USCF ratings will be rated in addition to their regular club ratings. Because of this, there will be a bump in the entry fees.

Since only club members may participate, it is essential that club memberships be kept current, and there are a number of regulars whose memberships are up for renewal in January. See the Dues section for details.

Please review the rules for this year's tournament in this issue of Chess Chatter. Do not hesitate to email or call Lon should you have questions.

We hope to see you on the 12<sup>th</sup>!

## PHCC HALL OF FAME

### **Club Champions**

1971 Robert Wilson

1972 Robert Wilson

1973 Gerald DeLugt

1974 Robert Wilson

1975 Lonnie Rutkofske

1976 Lonnie Rutkofske

1977 Lonnie Rutkofske

1978 Lonnie Rutkofske

1979 Robert Fiedler

Jack Heikamp

Lonnie Rutkofske

1980 Michael Petty

1981 Robert Fiedler

1982 Lonnie Rutkofske

1983 Lonnie Rutkofske

1984 Holger Seig

1985 Lonnie Rutkofske

1986 Lonnie Rutkofske

1987 Lonnie Rutkofske

1988	Philip Willard	1975	Douglas Cope
1989	Stewart Wilkinson	1976	Lonnie Rutkofske
	Scott Douglas	1977	Chris Scholfield
1990	Lonnie Rutkofske	1978	Lonnie Rutkofske
1991	Lonnie Rutkofske	1979	Robert Fiedler
1992	Robert Duncan	1980	Lonnie Rutkofske
	Lonnie Rutkofske	1981	Lonnie Rutkofske
1993	Andrew Bruziewicz	1982	Lonnie Rutkofske
1994	Andrew Bruziewicz	1983	Holger Seig
1995	G. Avery Jones	1984	Peter Wood
1996	Hugo Ortiz	1985	Lonnie Rutkofske
	William Wingrove	1986	Lonnie Rutkofske
1997	William Wingrove	1987	Lonnie Rutkofske
1998	Andrew Bruziewicz	1988	Stewart Wilkinson
1999	Andrew Bruziewicz		S. James Alexander
	Noel Bedy	1989	Andrew Bruziewicz
	Lonnie Rutkofske	1990	Lonnie Rutkofske
2000	William Wingrove	1991	Andrew Bruziewicz
	Lonnie Rutkofske	1992	Andrew Bruziewicz
2001-2006	No Tourney	1993	Andrew Bruziewicz
2007	Lonnie Rutkofske	1994	Andrew Bruziewicz
2008-2009	No Tourney	1995	Andrew Bruziewicz
2010	Alan Gregg	1996	Andrew Bruziewicz
2011	Alan Gregg	1997	Andrew Bruziewicz
		1998	Lonnie Rutkofske
		1999	Lonnie Rutkofske
		2000-2006	No Tourney
		2007	Lonnie Rutkofske
		2008-2009	No Tourney
		2010	Lonnie Rutkofske

### **Club Speed Champions**

1971	Robert Wilson
1972	Dan Thomas
1973	Robert Wilson
1974	No Tourney

2011 Eric Roome

## Junior Champions

### (Under 19)

1971 John Willmarth

1972 Dan Thomas

1973 Brian Wilson

1974 Bob Bland

1975 Doug Cope

1976-1979 No Tourney

1980 Chris Eagle

1981 Jeff Willard

1982 Jeff Willard

1983 Jeff Willard

1984 Jeff Willard

1985-1989 No Tourney

1990 Wes Tilson

1991 Sami Lumpola

1992 Wes Tilson

1993 Brian Ortiz

1994 Brian Ortiz

1995 Brian Ortiz

1996 Mark Ortiz

1997 Mark Keller

1998 Charlie West

1999 No Tourney

2000 Charlie West

2001-2011 No Tourney

## Duncan's Turkey Gobbler Champions

1980 William Daly

1981 Chris Eagle

1982 William Daly

1983 Bob Duncan

Jeff Willard

1984 Fred Goodell

1985 William Daly

1986 Chris Eagle

1987 Lonnie Rutkofske

1988 Stewart Wilkinson

1989 Lonnie Rutkofske

1990 Fred Goodell

1991-1992 No Tourney

1993 Andrew Bruziewicz

1994-1995 No Tourney

1996 Andrew Bruziewicz

1997 Andrew Bruziewicz

Lonnie Rutkofske

1998-2010 No Tourney

2011 Matt Morabito

## Roulette Champions

1980 Pat Forget

1981 Tim Gillion

1982 No Tourney

1983 Fred Goodell

1984 Holger Seig

1985 Fred Goodell

1986 Lonnie Rutkofske

1987-1989 No Tourney

1990 Fred Goodell  
 Lonnie Rutkofske  
 1991 No Tourney  
 1992 Andrew Bruziewicz  
 1993-1995 No Tourney  
 1996 Andrew Bruziewicz  
 1997 Andrew Bruziewicz  
 Eric Roome  
 1998-2011 No Tourney



## 2012 Port Huron Chess Club Championships

### Rules and Regulations of Play

The following general rules and regulations of play will govern participation in this year's tournament. All participants should be familiar with these rules and any special rules that govern their play.

#### General Rules:

1. All play will be governed by the official rules of chess as established by the FIDE and USCF as given in the most current edition of the Official Rules of Chess published by the USCF.
2. Touch rules will be in effect in all games. Both players must record the moves of the game and submit properly completed score sheets to the tournament director (TD) as soon as possible following the completion of the game. Time forfeits or illegal moves cannot be considered without accurate score sheets.
3. A chess timer (clock) must be used in all games. Time controls will be at the rate of "Game in 90 minutes ( 1 and ½ hours) per player. Play will begin by 7:00 PM at the PHCC or at a time and place agreed upon by both contestants. There will be no adjournments. All games are to be completed within the round time limits. Mechanical clocks will be set at 4:30. Prior to the beginning of the game both players are responsible for checking the

clock to determine if it is functioning properly and set correctly. Sets and clocks can be checked out at the club, should players need to use club equipment.

4. Only club members may participate in these events. Dues are payable to Lon Rutkofske.
5. It is the responsibility of the players to contact the TD for the next round pairings, if they are not present at the time of posting. An updated list of players and phone numbers will be developed and circulated among participants by the TD. Lon will also email the results and round pairings, prior to each round if you have given him your email address.
6. Winners, or the player having the white pieces in the case of a draw, must report the results to the TD.
7. Results should be reported to the TD by noon of the day preceding the next scheduled round.
8. It is the responsibility of the person not present on the date of the scheduled round to meet the reasonable request of his opponent.
9. Scheduled pairings take precedence over makeup games on Thursdays.
10. Byes count as a full point.
11. Disputes arising from play and unresolved by the players themselves shall be submitted to the TD. His decision will be

final. This year's TD will be Lon Rutkofske: 605 Lomasney

Ln., Marysville, MI 48040 Ph. 810-388-9219 or email me at

[ishking@aol.com](mailto:ishking@aol.com).

### **Special Rules:**

1. This year's event will feature a Round Robin style tournament. Players will be paired against every other player in the tournament on a fixed schedule that will be determined after registration ends at 7:00 PM on Thursday, January 12<sup>th</sup>.
2. All games between PHCC players will be receive club ratings. Games between USCF rated opponents will be USCF rated.
3. Rounds and Pairings:
  - Round 1      January 12
  - Other rounds will be determined by the number of entries, one per each Thursday after round 1, with one Thursday left for makeup games. Since a crosstable of players and their pairings will be provided to all entrants, players do not have to play their games at the club, nor do they need to follow the weekly round schedule, if their opponents agree to play at an alternate time and place. All games must be reported on the Wednesday, prior to the final makeup date designated by the T.D.
4. A bulletin of completed games will be circulated every other week of play, so make sure that your score sheets are complete and accurate.
5. A crosstable chart and phone numbers will be circulated to all players for their records and information in general. The official crosstable will be kept at the club, and will be kept current as results are reported.
6. Ties will be broken by the result of head to head competition.

7. Prizes: Plaques for Club Champion, Runner up Champion to be awarded a week following the makeup round.
8. Club Junior Champion title and plaque will be awarded to the top scoring club member under 19 years old.
9. Entry Fees: Adult: \$20:00 Under 19: \$5.00
10. Cash prizes. based on at least 10 entries, will be:
  - 1<sup>st</sup> Place - \$100
  - 2<sup>nd</sup> Place - \$50
  - Top Under 1600 - \$50
  - Biggest Upset and top Junior - \$20

## **Solutions to Turkey Gobbler 15 Problems for rounds 1 and 2.**

Taken from ***Spectacular Chess Problems*** by K S Howard:

Problem 1 (#181) 1.g8(R) Rg8; 2. h7g8(R), Ka2; 3. Ra8++

Problem 2 (#42) 1. Kb7, Nd8+; 2. Kb8, Nc6+; 3. Ka8, any; 4.Q or QN mates

Problem 3 (#140) 1. Nd4

## **Members' Games**

*Please send me what you consider your best games, annotated or not, so that I might be able to showcase them. The following games represent contests that have been available at the time of this printing. Email them to me or give them to me personally, if you wish. Majority of analysis done by Fritz 12, unless otherwise indicated.*

***What follows is analyses by former club member and now expert, Chris Eagle. After reviewing the Matt Morabito games featured in the November issue of CC, Chris decided to submit his analyses of Matt's games. Planning to rejoin the ranks of tournament play in the near future, Chris indicated that he makes the most gains in his game when he takes the time to thoroughly analyze the games of others, and since Matt plays similar openings, he felt it beneficial to share his analyses with all the readers of Chess Chatter. Thanks so much Chris, and good luck on your re-entry into competitive chess!***

### **Morian, William (1503) - Morabito, Matt (1748) [B53] Sicilian Defense**

2011 MI Open - Reserve Cadillac, MI (1), 02.09.2011  
[C,Eagle]

**1.e4 c5 2.♟f3 d6 3.d4 cxd4 4.♞xd4 ♘c6 5.♙b5 ♙d7 6.♙xc6 ♙xc6 7.♘c3 e5** even though this move isn't unknown in GM play, White scores very well with it due to his long term pressure down the d-file. Traditionally, Black has played 7...♟f6 although recently 7...h6 has been very popular too. **8.♞d3 ♟f6** Just recently, there have been a number of games with 8...h6 where Black has been able to demonstrate equality. After 8...♟f6 9 ♙g5 White is only objectively slightly better but he has a game that is really easy to play. **9.♙g5 ♙e7 10.0-0-0 ♞c7** This natural move allows White to force a rare position where two knights are markedly superior to 2 bishops. [10...♟g4 11.♙xe7 ♞xe7 12.♞d2 ♞d8=] **11.♙xf6 gxf6** I still have 35 master games with this position in my database, but Black's game has deteriorated to the point



where White wins a whopping 83% of the time. **12.♖he1** There's nothing wrong with this move, but there's no reason not to move the knight to f5 immediately before deciding the best square for the rook. **12...a6 13.♗h4 ♖g8 14.g3 b5 15.♗f5 ♗d8 16.♗d2 b4 17.♗d5 ♗xd5 18.♗xd5 ♖g6 19.♗ed1 ♗f8 20.♗d3 ♗b6** [20...♗h6 21.♗xh6 ♖xh6 at least gives White some chances to go wrong. Now the simple reshuffling of the major pieces gives White his breakthrough.] **21.♗e3 ♗c6 22.♗d5 ♗c7 23.♗d2** An excellent and instructive game, well played by both players. **1-0**

### **Morabito, Matt (1748) - Roome, Eric (1523) [C00] French Defense (KI Attack)**

2011 MI Open - Reserve Cadillac, MI (2), 03.09.2011

[C, Eagle]

**1.♗f3 d5 2.g3 ♗f6 3.♗g2 c5 4.0-0 ♗c6 5.d3 e6 6.♗bd2 ♗e7 7.♗e1 ♗c7 8.e4** This has transposed in a relatively well-known variation of the King's Indian Attack. **8...b5?!** This is too loosening. on the light squares. 0-0 or b6 are preferred here. **9.exd5!** KIA players know that you don't trade on d5 – you either play e5 or you make Black resolve the center tension. Here White sees that he can rip open the position and activate his pieces by violating the 'rules' of the opening. **9...exd5 10.c4!** The logical follow-up to the last move, but still deserving of a '!' **10...bxc4 11.dxc4 d4?!** [On the surface, Black has a protected passed pawn but it can be undermined with a timely b4 and so isn't as strong as it looks. Black needed to try 11...0-0 although after 12.cxd5 ♗xd5 13.♗c4 White pieces will come alive and dominate the board. For example: 13...♗d8 14.♗g5 ♗f6 (14...♗xg5 15.♗xd5!+-) 15.♗f3 and with ♗f4 coming up, Black can't keep everything protected.] **12.♗e5 ♗b7** [12...♗xe5! is objectively best. After 13.♗xa8 ♗d3 14.♗e2 0-0 White's pieces are uncoordinated and Black has some compensation for the exchange. After the game move, White obtains an outside passed pawn with no compensation, which will almost certainly convert to a win.] **13.♗a4 ♗c8 14.♗xc6** [There's nothing wrong with this move, but Black is completely tied up and after 14.b4! White gets his soon-to-be-passed queenside pawns moving and Black still has to find a way out of the bind he's in. 0-0 leaves the ♗e7 hanging after pieces are traded on c6. ♗f8 may be best, but Black's position is hopeless.] **14...♗xc6 15.♗xc6+ ♗xc6 16.♗xa7 ♗c7 17.♗xc7 ♗xc7 18.♗f3 0-0 19.♗f4 ♗b7 20.b3 ♗h5!?** **21.♗d2 h6 22.♗e5 ♗d6 23.♗d3 g5 24.♗g2?! ♗g7 25.♗e4?!** [White pieces are on their best squares and if Black just tries to hold his blockade, White will need to find a way to break through. The only lever in the position is b4, and it can be played on any of several moves around here: 25.b4 cxb4 26.c5 ♗c7 27.♗xb4 and the mobile pawns and active pieces will soon win for White] **25...♗a8 26.♗c1?! ♗f6 27.♗e1 ♗e7?** [After 27...♗a3 Black has almost a perfect blockade. The Whites pieces are completely tied down and it's not clear how he can untangle them without losing his a-pawn. After the game move, Black loses the ability to double up on the a-pawn.] **28.♗xe7 ♗xe7 29.f3 ♗d6 30.♗d3 ♗a3 31.h3?** Here, White spends 4 moves to offer to trade Black's bad bishop. A better plan is to play K-f2-e2 and get in b4. **31...♗g6 32.♗e1 ♗d7 33.g4 f6 34.♗g3 ♗e5?** [after 34...♗xg3 35.♗xg3 White is again stuck with a blockade that's tough to crack. The game move leaves Black with a bad bishop vs a solid knight and it should just be a matter of time until the White king evicts the Ra3 and gets the pawn moving.] **35.♗xe5 fxe5 36.♗f2 h5 37.♗e2 h4 38.♗f2 ♗f7 39.♗d3 ♗e6 40.♗e4 ♗e7 41.♗d3 ♗d6 42.♗b2** It's hard to find a break through here, but White's best try seems to be a4 followed by b4. Already Black is almost in zugswang and the mobile a-pawn will be one more thing to worry about. For instance **42...♗a8 43.♗d3** [It's hard to find a break through here, but White's best try seems to be a4 followed by b4. Already Black is almost in zugswang and the mobile a-pawn will be one more thing to worry about. For instance 43.a4 ♗c7 44.♗d3 ♗a5 (44...♗d6 45.a5 ♗a6 46.♗a2+- and Black has to let the a-pawn get to a6 when the R can penetrate via a5.) 45.b4 cxb4 46.♗xb4 ♗c5 47.♗c1 ♗a5 48.♗d3 ♗e7 49.♗a1 and White appears to be breaking through since if the Black K ever goes to e6, then White can activate his R with Rb1, due to ...Rxa4 Nc5+.] **43...♗a6 44.♗c1 ♗e7 45.♗b1 ♗d6 46.♗b2 ♗e7 47.♗d3 ♗d6 48.♗e2 ♗e7 49.♗c2 ♗d6 50.♗b2 ♗a8 51.♗d3 ♗f8 52.♗f2 ♗f7 53.a3 e4??** A horrible miscalculation by Black, as after Rb7, the blockade still holds. **54.fxe4 ♗xf2+ 55.♗xf2 ♗e5 56.b4 cxb4 57.axb4 ♗f4 58.c5 ♗c7 59.b5 ♗e5 60.♗b3 ♗a5 61.♗c4** Another very interesting game. **1-0**

### **Morabito, Matt (1748) - Poshuma, Joshua (1385) [C00] French Defense**

2011 MI Open - Reserve Cadillac, MI (3), 03.11.2011

[C, Eagle]

**1.♗f3 d5 2.g3 c5 3.♗g2 e6 4.0-0 ♗c6 5.d3 ♗f6 6.♗bd2 ♗e7 7.♗e1** This is a slight inaccuracy – e4 is preferred. If Black exchanges pawns on e4, then usually the White Q moves to c2 or e2 and the R goes to d1 instead of e1. **7...0-0 8.e4 d4?!** This gives White an easy game since it's easy to stop any q-side play and he can take his time and build up an attack on the k-side. [Today the most popular move among GMs is 8...b5 As opposed to the round 2 game, the Black K is safely castled and he's free to expand on the q-side] **9.♗c4?!** There are two standard ways for White to play the position after d4. [He allow ...e5

but use his space advantage to gain N outposts on c4 and f5 and pressure the dark squares with 9.a4 e5 10.♖c4; He can play e5 himself and use the fact that the black K has no defenders to launch an immediate k-side attack with 9.e5 ♗d5 10.h4] **9...b5** Black gets to play his preferred move with tempo. **10.♗cd2 ♗b7 11.a4 a6 12.b3?!** [White should still try to gain some space in the center with 12.e5 on this or the last move, although the loss of two tempi makes the k-side attack less likely to succeed before Black breaks through on the q-side] **12...e5** Black has a space advantage and can mobilize his pieces to play for c4 at his leisure. In the meantime, the White pieces will have a hard time finding good squares. **13.♗b2 ♗d7 14.♗h4 ♗d6?!** After playing an excellent opening, Black loses his way in the middle game. [14...♗fc8 with the idea of moving the B to f8 where it can help defend the k-side while also supporting q-side expansion is a common setup. Keeping the white N out of f5 with g6 followed by relocating the B to g7 is also reasonable.] **15.♗f5 ♗c7?!** Black spends two moves to put his B on a square where it can't help out on the k-side and is in the way on the q-side. **16.♗h3 ♗h8?!** The k is awkwardly placed in the corner. [16...♗d8 is an unpleasant move, but it'll have to be made next move anyway, so may as well do it now. Another drawback of the B maneuver is the it denies the Q the natural c7 square.] **17.♗g2 ♗d8 18.♗f3** We've arrived at an awkward position where neither side can move forward with an active plan without a major piece reorganization. **18...♗e7 19.axb5 20.♗xa8 ♗xa8 21.♗xe7 ♗xe7 22.♗d2?! ♗g8?** this move just makes no sense. White's last move left the e4 pawn underprotected as well as put the B and Q in a spot where they can be forked. [22...c4 is completely thematic here and gives Black a solid edge. There doesn't appear to be any way to stop ...c3 after which Black will penetrate with the heavy pieces down the a-file.] **23.♗a1 ♗b7 24.♗g5 ♗xg5?** it's almost like Black is trying to make his pieces ineffective and White's active. **25.♗xg5 h6 26.♗a7!** White cashes in the poor placement of the Black pieces and is winning at least a clear pawn. **26...♗b8?** [Black really needed to try 26...hxg5 27.♗xb7 ♗d6 when he's losing just a pawn.] **27.♗xf7+ ♗h7 28.♗c1?** This move allows Black to complicate matters. The White N is almost trapped. [28.♗f5+ g6 29.♗c8! is going to win at least a piece since the K has no way to avoid a discovered check on the 7th, and also has to worry about Ng5+ and Rh7++.] **28...♗g6 29.♗e6 ♗b6** [29...♗f6 30.♗d5 ♗xd5 saves the N and wins a piece; 29...♗e7! takes away d5 from the B and allows Black to regain his pawn 30.f4 the only move to save the N 30...♗f6 31.f5 ♗xf5 32.♗xf5 is probably best(after 32.♗d5 ♗xd5 33.exd5 ♗c8! the N can't get out) ] **30.♗xe5+-** now White rescues everything and wins a 2nd pawn. **30...♗f6 31.♗d7+ ♗xe6 32.♗xb6 g5 33.f4 gxf4 34.♗xf4 ♗xe4+ 35.dxe4 ♗xb6 36.♗c7 ♗f6 37.♗xc5 ♗g8** [37...♗xe4 38.♗e5+] **38.♗f3 ♗f6 39.♗xh6 ♗d7 40.♗c8 ♗e5+ 41.♗e2 ♗d7 42.♗h8 ♗f7 43.♗h7 ♗e8 44.♗f4 ♗e7 45.♗d3 ♗c6 46.♗d2 ♗c8 47.♗h5 1-0**

## **Schweibert,Loren - Morabito,Matt (1748) [B52] Sicilian Defense (Moscow Var)**

2011 MI Open - Reserve Cadillac, MI (5), 04.11.2011

[C,Eagle]

**1.e4 c5 2.♗f3 d6 3.♗b5+ ♗d7 4.♗xd7+ ♗xd7 5.0-0 ♗c6 6.c3 e6** [6...♗f6 is the popular move here and White usually sacs a pawn with 7.d4 ♗xe4 8.d5 ♗e5 9.♗e1] **7.d4** in the game, White gets the big center without having to gambit a pawn. **7...cxd4 8.cxd4 ♗f6 9.♗c3** slow [9.d5 ♗e5 10.dxe6 ♗xf3+ 11.♗xf3 gives White a nice edge due to his space advantage, better pawn structure, and easier piece placement.] **9...♗e7 10.♗e2 0-0 11.♗d1 d5 12.e5 ♗e8 13.♗g5 g6!** Black comes up with a nice defensive scheme that both blunts White's attack and gets the Ne8 to the powerful f5 square. **14.♗g4 ♗g7 15.♗h3 h5** and White has no real way to press his attack **16.♗d3 ♗f5 17.g4?!** An interesting try, but Black will win the entire White center and free all his pieces. **17...hxg4 18.h3 ♗fxd4 19.hxg4 ♗xg5 20.♗xg5 ♗xe5! 21.♗f6** A desperate try in a lost position **21...♗xd3 22.♗xd3 e5!-+ 23.♗g2 ♗xg4+ 24.♗g3 ♗e6 25.♗h3 ♗xf6 26.♗ah1 ♗ad8 0-1**

## **PHCC Rating List**

The following list represents only current members of the Port Huron Chess Club. Current USCF ratings were used for members that had them, in order to establish the initial club rating list. The USCF rating format is used as the basis for calculating our club rating list. Members that had no USCF ratings are given a provisional rating based on their performances against regular club members who had USCF ratings. Club rated events will use these ratings for pairing purposes.

### PHCC Rating List as of 12/7/11

Name	Rating
Gregg, Alan	1943
Rutkofske, Lon	1871
Morabito, Matt	1760
Broyles, Tom	1736
Wingrove, Bill	1694
Roome, Eric	1641
Bedy, Noel	1603
Oriel, Paul	1569
Jones, G. Avery	1548
Chan, Jaime	1502
Boucher, Dave	1404
Krazyca, Jay	1000
Sienkiewicz, John	1000

### USCF Ratings as of 12/7/11

Name	Rating
Gregg, Alan	2030
Rutkofske, Lon	1805
Morabito, Matt	1766
Broyles, Tom	1737
Wingrove, Bill	1694
Roome, Eric	1546
Chan, Jaime	1519
Jones, G.Avery	1505
Bedy, Noel	1395
Boucher, Dave	1277

### PHCC Speed Rating List as of 12/7/11

Name	Rating
Gregg, Alan	1971
Rutkofske, Lon	1911
Roome, Eric	1721
Morabito, Matt	1668
Wingrove, Bill	1588
Bedy, Noel	1529
Jones, G. Avery	1485
Matt Hartson	750
Ferguson, Gabe	750

## Calendar of Events:

**First Thursday of Each Month** - Chess Clinics— 6:30 to 8:00 PM - \$7.50 per person

**December 15<sup>th</sup> – Christmas Mini-Swiss:** 3 rounds –G/30 events. EF\$5.00, prizes based on entries.

**January 12 - 2012 PHCC Championships:** This will be the first time that the Club Championship will feature a round robin style tournament, were all players get a chance to play each other. A game will be played each Thursday, until the round robin is completed. Registration begins January 5, with the first round beginning on January 12<sup>th</sup> at 7:00PM. Entry fee is \$20, and prizes will be based on entries. There will be a guaranteed prize of \$100 for the club champion, with a plaque for club champion, runner-up champion and top junior( under 19). There will be a one week window at the conclusion of the tournament for make up games to be completed. See the details in this issue of Chess Chatter.

## Dues News:

While dues are not required for anyone interested in playing at the club, they are required for those competing in tournament play. Annual Dues are \$20.00 for adults and \$10.00 for those under 19. Dues funds are used to offset miscellaneous expenses not funded by the Recreation Department. **Members expiring in January: Lon Rutkofske, Alan Gregg, Bill Wingrove, Dave Boucher.**