



# Chess Chatter

Newsletter of the Port Huron Chess Club

---

**Editor: Lon Rutkofske    January 2012    Vol.31. Number 1**

---

The **Port Huron Chess Club** meets Thursdays, except holidays, from 6:30-10:00 PM, at Palmer Park Recreation Center, 2829 Armour Street, (NE corner of Garfield Street and Gratiot Ave...1 mile North of the Blue Water Bridge) Port Huron, Michigan. Everyone is welcome. All equipment provided. Website: <http://porthuronchessclub.volasite.com>

---

## Gregg tops foes in year ending round robin.

**Alan Gregg** , recently returned from the UK, succeeded in using this December round robin to dust off his game in preparation for the coming club championships as well as the January MI Masters/Experts/Class Championships. Using his typical methodical style, Alan “the snake” as he was monikered by Michigan Master, David Hahn at this year’s Michigan Masters/Expert/Class event in Lansing, had little difficulty dismantling the opposition in this wispy year ending round robin. **Bill Wingrove**, the very reverend, but entirely irreverent chess nut, fell only to Alan in a brief 28 move affair, while Lon and **Avery Jones**, brought up the very rear of the year ending fete. Complete game scores can be found in this issue’s Member Games section.

### December 2011 G/30 Round Robin

#	Name	Rtng	Post	Rd 1	Rd 2	Rd 3	Tot
1	Alan Gregg	1943	1957	W4	W2	W3	3.0
2	Bill Wingrove	1694	1726	W3	L1	W4	2.0
3	Lon Rutkofske	1871	1851	L2	W4	L1	1.0
4	G. Avery Jones	1548	1532	L1	L3	L2	0.0

## Three PHCC Amigos take some hides in the January Michigan Masters/Experts/Class Tournament in Lansing.

**Noel Bedy**, **Alan Gregg**, and **Lon Rutkofske** braving the treacherous Michigan roads to participate in this year’s Michigan Masters/Experts/Class Championships hosted at the Radisson in downtown Lansing the week of January 14<sup>th</sup> and 15<sup>th</sup>. Scoring 3.5, 3.0 and 2.5 respectively, this hearty trio managed to make other chess players in the state take notice as they did their fellow PHCC’ers proud. While Lon was pleased NOT to lose rating points, Alan proceeded to thump a pair of masters, and both he and Noel were in the hunt for “fortune and glory” until the bitter end. Noel drew his last round game with the eventual class D winner and Alan succumbed to 2011 MI Open Champion, Atulya Shetty in his final round game. Overall, a great outing for PHCC’ers!

# St. Clair Chess Club Featured in *Times Herald* Article – Complete Story Follows:

## Game on: Chess club meets weekly By BOB GROSS

Times Herald



Members of the St. Clair Chess Club meet each Saturday morning at the St. Clair Burger King. / WENDY TORELLO/Times Herald

ST. CLAIR -- The setting is a Burger King, but you won't find paper crowns at the tables frequented by Tom Broyles, Dave Boucher and their friends.

Members of the St. Clair Chess Club have been meeting for about 10 years on Saturday mornings at the Burger King at 200 Clinton Ave. in St. Clair.

"It's just a wonderful game," said Broyles, who lives in East China Township. "We like to think of it as a sport, and as a sport it doesn't matter how old you are.

"In fact, I get more nervous sometimes playing against an 8-year-old kid than against an adult -- you have more to lose."



David Boucher watches as opponent Tom Broyles makes his move during a chess game at the St. Clair Burger King. They are part of a club that meets each Saturday morning at the restaurant. / WENDY TORELLO/Times Herald

Players start rolling in around 10 a.m., setting up portable chess boards and arranging their pawns, rooks, knights, bishops, queens and kings on the black-and-white squares.

"We'll start at 10 o'clock, and we've been known to close this place down," Broyles said. "You just come when you want to and play."

Boucher, a resident of East China, also is a member of the Port Huron Chess Club. Members play at the Palmer Park Recreation Center.

"It's one of the very few games where there is no element of luck," Boucher said. "It's up to you -- how much you can see, how much calculating you have done."

Broyles said everyone is an equal at a chess board.

"Another thing I like about chess is everybody's got problems, and you play chess and they're all gone," he said.

"Yeah," said Boucher. "You're in the game."

Lon Rutkofske of Port Huron is president of the Port Huron Chess Club, which started in 1969.

"It is the Port Huron Recreation Department's longest-running program," he said while watching a game between Broyles and Boucher.

Rutkofske, Broyles and Boucher describe chess as being "beautiful" and "pure."

"It's a challenging game," Rutkofske said. "You never really get the sense that you've mastered the game because there are so many variables.

"There are no limitations because age, gender have no bearing on the game whatsoever. You can play against a 5-year-old and they can kick your fanny as well as an 85-year-old."

### **ST. CLAIR CHESS CLUB**

- » Free chess play and instruction for all ages starts at 10 a.m. on Saturdays at the St. Clair Burger King, [200](#) Clinton Ave. Play is supposed to end at 2 p.m. but continues as long as players want to play
- » Call (810) 326-0121 for more information

### **PORT HURON CHESS CLUB**

- » The Port Huron Chess Club meets from 6:30-10 p.m. on Thursdays, except [holidays](#), at the Palmer Park Recreation Center, 2829 Armour St.
- » Yearly membership fees are \$20 adults, \$10 ages 19 and younger
- » The club's website is <http://porthuronchessclub.yolasite.com>
- » The 2012 club tournament begins at 7 p.m. Thursday at the Palmer Park Recreation Center. Competitors will play a round robin on consecutive Thursdays until the tournament is complete. The tournament is open to current and new club members, and the entry fee is \$20
- » The 16th annual Port Huron Area School District chess tournament is 8 a.m. to 1 p.m. March 17 at the Port Huron High School cafeteria. It is open to all district students from kindergarten through 12th grade.

**Contact Bob Gross at (810) 989-6263 or [rgross@gannett.com](mailto:rgross@gannett.com).**

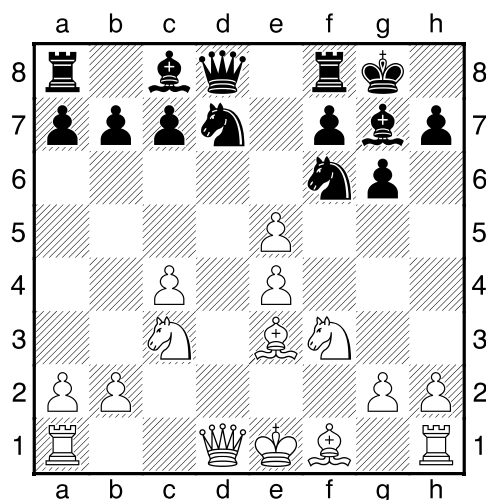
## **Members' Games**

*Please send me what you consider your best games, annotated or not, so that I might be able to showcase them. The following games represent contests that have been available at the time of this printing. Email them to me or give them to me personally, if you wish. Majority of analysis done by Fritz 12, unless otherwise indicated.*

### **Merrick, Lee - Morabito, Matt [E76] King's Indian Defense: 4 Pawns Attack**

London CC- Winter-winit (5), 07.01.2012

**1.d4 Nf6 2.c4 g6 3.Nc3 Bg7 4.e4 d6 5.f4 0-0 6.Nf3 Nbd7 7.Be3 e5 8.dxe5 dxe5**  
[Fritz 12: 1) 8...dxe5 9.fxe5 Ng4 10.Bg5 Qe8 11.Nd5 Ngxe5 12.Qe2 Nxf3+ 13.gxf3 Qe5  
14.f4 Qxb2 15.Qxb2 Bxb2 16.Rb1 Bd4 0.01/17 ; Fritz 12: 2) 8...Ng4 9.Bg1 dxe5 10.h3  
Nh6 11.g4 exf4 12.g5 Bxc3+ 13.bxc3 Re8 14.gxh6 Rxe4+ 15.Be2 Qe7 16.Qd3 Nb6  
0.18/17 ; Fritz 12: 3) 8...Nh5 9.g4 Nxf4 10.Bxf4 Nxe5 11.Nxe5 dxe5 12.Bg3 Qxd1+  
13.Rxd1 Bxg4 14.Be2 f5 15.Rd7 Rf7 16.Rxf7 Kxf7 2.32/17 ; Fritz 12: 4) 8...Ne8 9.Be2  
Qe7 10.Nd5 Qd8 11.Bf2 c6 12.Bh4 f6 13.e6 cxd5 14.exd7 Qa5+ 15.Kf2 Bxd7  
16.Qxd5+ Qxd5 17.cxd5 Rc8 2.02/16 ; Fritz 12: 5) 8...Nxe4 9.Nxe4 dxe5 10.Qc2 f5  
11.Nc3 exf4 12.Bxf4 Re8+ 13.Be2 Bxc3+ 14.bxc3 Qe7 15.Kf2 Qc5+ 16.Nd4 Ne5  
17.Rhe1 2.72/16 ] **9.fxe5** Diagram

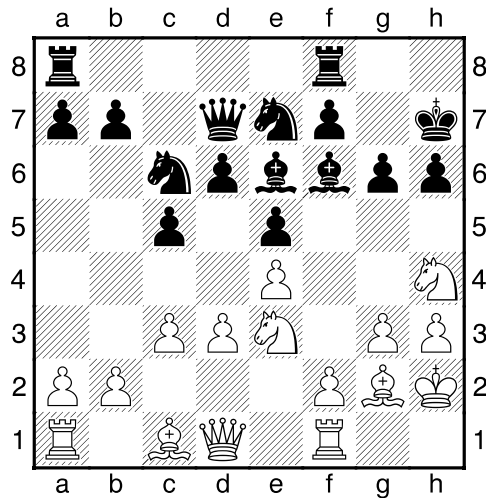


**9...Ng4 10.Bg5 Qe8** [Fritz 12: 1) 10...Qe8 11.Nd5 Ngxe5 12.Qe2 Nxf3+ 13.gxf3 Qe5 14.f4 Qxb2 15.Qxb2 Bxb2 16.Rb1 Bd4 17.Ne7+ Kg7 18.Nxc8 Raxc8 19.Rxb7 0.01/14 ; Fritz 12: 2) 10...f6 11.Qd5+ Kh8 12.exf6 Bxf6 13.Be2 c6 14.Bxf6+ Qxf6 15.Qd2 Nde5 16.0-0-0 Nf2 17.Nxe5 Nxd1 18.Nxg6+ 0.73/14 ; Fritz 12: 3) 10...Ndf6 11.Qxd8 Rxd8 12.exf6 Bxf6 13.Bxf6 Nxf6 14.e5 Ng4 15.h3 Ne3 16.Kf2 Nc2 17.Rc1 Bf5 18.Nd5 3.98/14 ; Fritz 12: 4) 10...Ngf6 11.exf6 Bxf6 12.Bxf6 Nxf6 13.e5 Ng4 14.h3 Ne3 15.Qd2 Nxf1 16.Rxf1 Qxd2+ 17.Kxd2 Rd8+ 18.Kc2 Bf5+ 19.Kb3 Kg7 4.18/14 ; Fritz 12: 5) 10...Ne3 11.Qe2 Nxg2+ 12.Bxg2 Qe8 13.0-0-0 Nxe5 14.Nxe5 Bxe5 15.Bh6 Bxc3 16.Bxf8 Bxb2+ 17.Qxb2 Qxf8 18.e5 Qc5 4.36/14 ] **11.Nd5 Ngxe5 12.Be7 Nxf3+ 13.Qxf3 c6 14.Bxf8 Kxf8 15.Nc7** [Fritz 12: 1) 15.Nc7 Qe7 16.Nxa8 Qb4+ 17.Kd1 Qxb2 18.Rc1 Ne5 19.Qf4 Bg4+ 20.Ke1 Bf6 21.h4 Be7 22.c5 Qb4+ 23.Kf2 Bxc5+ 24.Kg3 1.36/15 ; Fritz 12: 2) 15.Nc3 Ne5 16.Qf4 Bg4 17.h3 Be6 18.0-0-0 Nxc4 19.Bxc4 Bxc4 20.Qe3 Qe7 21.h4 Kg8 22.h5 0.23/14 ; Fritz 12: 3) 15.Qa3+ Kg8 16.Qe7 Qf8 17.Qxf8+ Kxf8 18.Nc3 Nc5 19.Rc1 f5 20.Be2 Nxe4 21.Nxe4 fxe4 22.Rc2 Be6 23.0-0+ 0.17/14 ; Fritz 12: 4) 15.Ne3 Bxb2 16.Rd1 Bc3+ 17.Kf2 Qe7 18.Be2 Nc5 19.Bd3 Be5 20.Be2 Kg8 21.Ng4 Bg7 22.Rhe1 Bxg4 -0.97/14 ; Fritz 12: 5) 15.Nf4 Bxb2 16.Rd1 Qe5 17.Be2 Bc3+ 18.Kf1 Nf6 19.Nd3 Qxe4 20.Nc5 Qe5 21.Qg3 Kg7 22.Qxe5 -1.21/13 ] **15...Qe5 16.Nxa8** [Fritz 12: 1) 16.Qa3+ Nc5 17.Nxa8 Bg4 18.Be2 Bxe2 19.Kxe2 Qxe4+ 20.Kf2 Qf4+ 21.Qf3 Ne4+ 22.Ke2 Qd2+ 23.Kf1 Qxb2 24.Rd1 Nd2+ 25.Rxd2 1.71/13 ; Fritz 12: 2) 16.Be2 Qa5+ 17.b4 Qxc7 18.Rd1 Be5 19.g4 Qb6 20.a3 c5 21.Qe3 a5 22.b5 Nf6 -3.94/13 ; Fritz 12: 3) 16.Nxa8 Qxb2 17.Rc1 Qxc1+ 18.Qd1 Bc3+ 19.Ke2 Qb2+ 20.Ke3 Ne5 21.Be2 Kg7 22.Kf4 Bd2+ 23.Kg3 Qc3+ 24.Kf2 Qd4+ 25.Kf1 -4.44/13 ; Fritz 12: 4) 16.Qd3 Qa5+ 17.Qd2 Qxc7 18.0-0-0 Nc5 19.Qe3 Qe7 20.Be2 Bf5 21.Bf3 Qe5 22.Rd2 Nxe4 23.Bxe4 -4.15/12 ; Fritz 12: 5) 16.Qe2 Qa5+ 17.Qd2 Qxc7 18.0-0-0 Nc5 19.Qe3 Qe7 20.Be2 Bf5 21.Bf3 Qe5 22.Rd2 Nxe4 23.Bxe4 -4.15/12 ] **16...Qxb2 17.Rd1 Bc3+ 18.Qxc3 Qxc3+ 19.Rd2 Qe5 20.Be2 Qb8 21.Bg4 Ke7 22.0-0 Ne5 23.Be2 Qxa8 24.Re1 Be6 25.c5 Nd7 26.Rc1 Qb8 27.Rd6 Nxc5 28.e5 Ne4 0-1**

### Rutkofske,Lon (1871) - Wingrove,Bill (1694) [A04] KI Attack

December 2011 Round Robin Port Huron Chess Club (1), 15.12.2011

**1.Nf3 c5 2.g3 Nc6 3.Bg2 d6 4.d3 g6 5.0-0 Bg7 6.Nbd2 e5 7.e4 Nge7 8.Nc4 0-0 9.Nh4 h6 10.Ne3 Kh7 11.c3 Be6 12.h3 Qd7 13.Kh2 Bf6** Diagram



**14.Nf3 g5 15.Qd2 Rg8 16.Nd5 Nxd5 17.exd5 Bxd5 18.Nxe5 dxe5 0-1**

**Gregg,Alan (1914) - Jones,G Avery (1548) [B06] Modern Defense**

December 2011 Round Robin Port Huron Chess Club (1), 15.12.2011

1.e4 Nc6 2.Nc3 g6 3.d4 Bg7 4.Nf3 d6 5.Be2 Bg4 6.Be3 Nf6 7.Qd2 0-0 8.0-0-0 Re8 9.Kb1 a6 10.h3 Bxf3 11.Bxf3 e5 12.d5 Na7 13.g4 b5 14.h4 b4 15.Ne2 a5 16.h5 Qd7 17.Rdg1 Reb8 18.g5 Ne8 19.hxg6 fxg6 20.Bg4 Qa4 21.Be6+ Kf8 22.Bxa7 Rxa7 23.Qe3 Raa8 24.Qf3+ Ke7 25.Qf7+ Kd8 26.Rxh7 Qb5 27.Rxg7 Nxg7 28.Qxg7 c5 29.Rh1 1-0

**Gregg,Alan (1943) - Rutkofske,Lon (1871) [A00] Irregular Opening**

December 2011 Round Robin Port Huron Chess Club (2), 15.12.2011

1.a3 g6 2.e4 Bg7 3.Nc3 d6 4.Nf3 Nf6 5.Be2 0-0 6.0-0 b6 7.d3 Bb7 8.Bd2 Nbd7 9.Qc1 Re8 10.Bh6 Bh8 11.h3 e5 12.Nh2 Qc8 13.Ng4 Nc5 14.Bg5 Nxg4 15.Bxg4 Ne6 16.Nd5 Bxd5 17.exd5 h5 18.Bxh5 Nxg5 19.Qxg5 Qf5 20.Qxf5 gxf5 21.c3 Re7 22.a4 Bf6 23.a5 Ree8 24.f4 e4 25.d4 Bh4 26.Kh2 Kg7 27.g3 Be7 28.Kg2 Kf6 29.Be2 Reb8 30.b4 Bd8 31.Bb5 a6 32.Bc6 Ra7 33.axb6 cxb6 34.Ra2 b5 35.Rfa1 Rb6 1-0

**Jones,G Avery (1548) - Wingrove,Bill (1694) [D02] Queen Pawn Opening**

December 2011 Round Robin Port Huron Chess Club (2), 15.12.2011

1.d4 Nf6 2.Nf3 g6 3.g3 Bg7 4.Bg2 d5 5.0-0 0-0 6.Nc3 Nbd7 7.Re1 c5 8.Bg5 h6 9.Bc1 cxd4 10.Nxd4 e5 11.Nf3 d4 12.Nb1 Qc7 13.c3 dxc3 14.Nxc3 Rd8 15.Qb3 Nc5 16.Qc4 Be6 17.Qh4 h5 18.Bg5 Ncd7 19.Rac1 Qc4 20.e4 Rac8 21.Nd5 Bxd5 22.Rxc4 Bxc4 23.Nxe5 Nxe5 24.Bxf6 Bxf6 25.Qxf6 Ng4 26.Qe7 Bxa2 27.h3 Nh6 28.Qxb7 Rc2 29.Qxa7 Rxb2 30.Rc1 Rdd2 31.Rc8+ Kh7 32.Qa8 Rxf2 0-1 Time

**Rutkofske,Lon (1871) - Jones,G Avery (1548) [A05] Reti Opening**

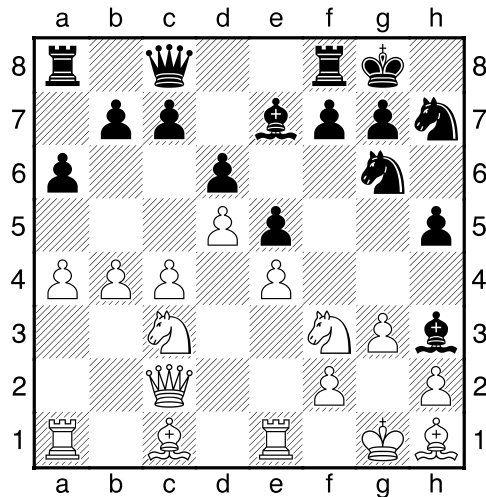
December 2011 Round Robin Port Huron Chess Club (3), 15.12.2011

1.Nf3 g6 2.g3 Bg7 3.Bg2 Nf6 4.d3 0-0 5.e4 d6 6.0-0 Bg4 7.Nbd2 Qc8 8.Re1 e5 9.a4 c6 10.c3 Nbd7 11.h3 Bxf3 12.Nxf3 Nc5 13.Be3 Ne6 14.Nh2 h5 15.f4 exf4 16.gxf4 Rd8 17.Qf3 b6 18.d4 Qa6 19.Bf1 Qb7 20.e5 Nd5 21.Bc1 Ne7 22.Bd3 dxe5 23.fxe5 Rf8 24.Qg2 Rad8 25.Bc2 Nd5 26.Rf1 Qe7 27.Qe4 Rd7 28.Nf3 a5 29.h4 Qd8 30.Bb3 Qa8 31.Ng5 Nxg5 32.Bxg5 Qb7 33.Rae1 Kh7 1-0

**Wingrove,Bill (1694) - Gregg,Alan (1943) [A54] Old Indian Defense**

December 2011 Round Robin Port Huron Chess Club (3), 15.12.2011

**1.e4 Nc6 2.d4 e5 3.d5 Nce7 4.Nf3 d6 5.c4 Ng6 6.Nc3 Nf6 7.g3 Be7 8.Bg2 0-0 9.0-0 h6 10.b3 Bg4 11.Qc2 Qc8 12.Re1 a6 13.a4 Bh3 14.Bh1 Nh7 15.b4 h5** Diagram



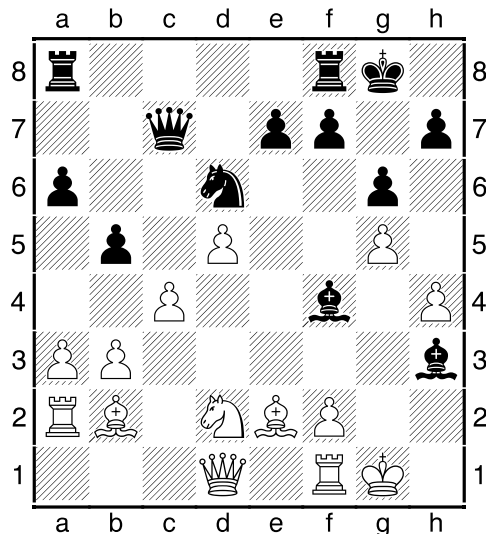
16.Ba3 h4 17.c5 hxg3 18.fxg3 Qg4 19.Qd3 f5 20.Nd1 f4 21.Nf2 Qh5 22.Nxh3 Qxh3 23.Bg2 Qg4 24.Nd2 Ng5 25.Qe2 f3 26.Bxf3 Nxf3+ 27.Kg2 Nxe1+28.0-1

## 2012 PHCC Championships – Round 1 Games

### Boucher,Dave (1404) - Rutkofske,Lon (1851) [B01] Scandinavian Defense

2012 PHCC Championships Port Huron Chess Club (1), 12.01.2012

1.e4 d5 2.exd5 Nf6 3.c4 g6 4.Nf3 Bg7 5.Be2 c6 6.dxc6 Nxc6 7.d4 0-0 8.0-0 Bf5 9.a3 Ne4 10.d5 Ne5 11.Nxe5 Bxe5 12.Nd2 Qc7 13.Nf3 Bg7 14.Nd2 Nd6 15.Ra2 a6 (15...e6? 16.g4 wins a piece!) 16.b3 b5 17.Bb2 Bh6 18.g4!? Bd7 19.h4 Bf4 20.g5 Bh3?? Diagram



[This was a poor choice, since it really loses a tempo, forcing the Rook to a natural square and permitting Bf1 driving the white bishop away and protecting the K. Better was 20...Nf5 forcing the h pawn to advance and losing the g pawn.] 21.Re1 Qb6 [ A horrible waste of a tempo. Far better was probably 22....f6 .] 22.Nf3 Nf5 23.Bd4 Qd8

**24.Qa1??** [White returns the favor...hoping for a cheapo with Bh8 followed by Qg7 mate, but he hasn't the time. A better plan would have been Bf1 and doubling the rooks with Rae2!]] **24...f6 25.Bd3 Qd7 26.Bxf5 Qxf5 27.Nh2 fxe5 28.Rxe7 Rf7 29.Rae2 gxe4 30.Re8+ Rf8 31.Bh8 Qg5+ 0-1**

**Jones,G. Avery (1532) - Morabito,Matt (1760) [B07] Pirc Defense**

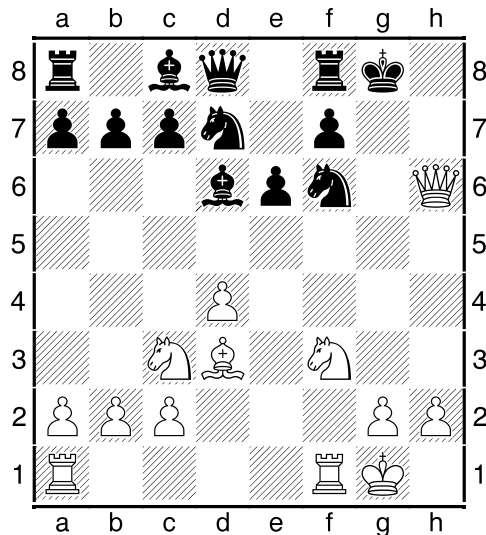
2012 PHCC Championships Port Huron Chess Club (1), 12.01.2012

1.d4 Nf6 2.Nf3 d6 3.Nc3 Nbd7 4.g3 g6 5.Bg2 Bg7 6.0-0 0-0 7.e4 e5 8.Bg5 h6 9.Bc1 exd4 10.Nxd4 Re8 11.Re1 Ne5 12.Nce2 Bg4 13.f3 c5 14.fxe4 cxd4 15.h3 Nc4 16.Nxd4 Qb6 17.c3 Nxb2 18.Bxb2 Qxb2 19.Qd3 Nd7 20.Reb1 Nc5 21.Qc4 Qd2 22.Rd1 Qe3+ 23.Kh2 Nxe4 24.Rd3 Nd2 25.Rxe3 Nxc4 26.Rxe8+ Rxe8 27.Bxb7 Re3 28.Rf1 Rxc3 29.Ne2 Rc2 30.Bf3 Nd2 31.Kg2 Nxf1 32.Kxf1 Rxa2 33.Bd5 Kf8 34.Bxa2 Ke7 35.Nf4 Be5 36.Nd5+ Kd7 37.Kf2 a5 38.Kf3 f6 39.h4 Bd4 40.g5 hxe5 41.hxe5 fxe5 42.g4 a4 43.Bb1 a3 44.Nb4 Ke6 45.Bxe6 Bc5 46.Na2 Ke5 47.Ke2 Kd4 48.Bf7 Ke4 49.Be6 Kf4 50.Kd3 Ke5 51.Bf5 d5 52.Kc2 Kd4 53.Kb3 Ke3 54.Nc1 Kd2 55.Nd3 Bd6 ½-½

**Bedy,Noel (1603) - Fiedler,Bob (1725) [D00] Unusual QP Opening**

2012 PHCC Championships Port Huron Chess Club (1), 12.01.2012

1.d4 d5 2.e4 dxe4 3.Nc3 Nf6 4.f3 exf3 5.Nxf3 e6 6.Bd3 Bd6 7.Bg5 Be7 8.0-0 h6 9.Bf4 0-0 10.Qd2 Bd6 11.Bxe6 gxe6 12.Qxe6 Nbd7 Diagram



13.Ne5 Bxe5 14.dxe5 Nxe5 15.Rxf6 Qd4+ 16.Kh1 Nxd3 17.Qg5+ 1-0

**Ferguson,Gabriel (500) - Gregg,Alan (1957) [B00] Unusual K-Pawn**

2012 PHCC Championships Port Huron Chess Club (1), 12.01.2012 [Alan Gregg]

**1.e4 Nc6 2.Nc3 g6 3.Nf3 Bg7 4.Bc4 e6 5.0-0 Nge7 6.d3 0-0 7.Bg5 h6 8.Be3** loses a piece to d5 [8.Bh4 best keeps the pressure on ; 8.Bd2 also good] **8...Kh7** I now make a mistake and miss d5 [8...d5] **9.Nh4** this is worse the game is now lost for white [9.d4 best] **9...d5 10.exd5 exd5 11.Bb5 d4 12.Bxd4** [12.Bxe6 Bxe6 13.Ne4 best chance but game is lost] **12...Nxd4 13.Bc4 Nef5 14.g3** the final mistake **14...Nxe4 15.gxe4 Qxe4 16.Nb5 Bh3 17.Kh1 Nxb5 18.Bxb5 c6 19.Bc4 Be5 20.Qe1 Qf4 21.Rg1 Qxe4#** Gabriel is a junior and started out ok up to move 8 he will get better AG **0-1**



## Wingrove,Bill (1726) - Nowiski,Adam [C48] Four Knights' Game

2012 PHCC Championships Port Huron Chess Club (1), 12.01.2012

1.e4 e5 2.Nf3 Nc6 3.Bb5 Nf6 4.0-0 Bc5 5.Nc3 d6 6.h3 0-0 7.d3 Bb4 8.Bg5 Be6 9.Nd5  
Nxd5 10.Bxd8 Nxd8 11.exd5 Bxd5 12.c4 Be6 13.Ng5 Bc5 14.Nxe6 Nxe6 15.a3 h6  
16.Bd7 Nd4 17.b4 Bb6 18.Bg4 Nc6 19.Bf3 Bd4 20.Rb1 Ne7 21.Bxb7 Rab8 22.Be4 Bc3  
23.Qa4 Bd4 24.Qd7 Rbd8 25.Qxe7 Bc3 26.Qxc7 a6 27.Qb6 Bd2 28.Qxa6 Rb8  
29.Qxd6 Rbe8 30.b5 Rb8 31.Qxe5 Rbd8 32.Qf5 Rd4 33.Qh7# 1-0

## PHCC Member Games from the Michigan Masters/Experts/Class Championships – January 14-15, 2012 – Lansing , MI

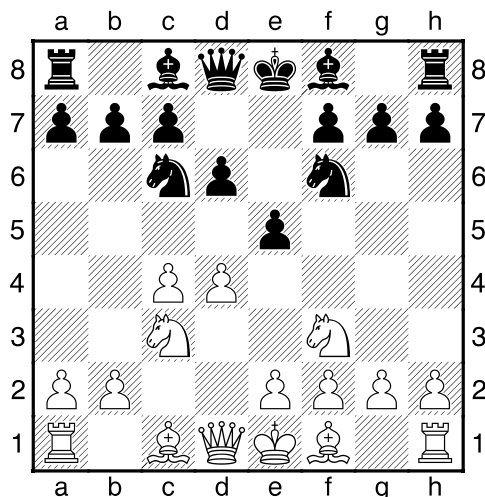
*(Alan, Lon and Noel all took a bye for round 3.)*

## Hahn,David (2135) - Gregg,Alan (2030) [A54] Old Indian Defense

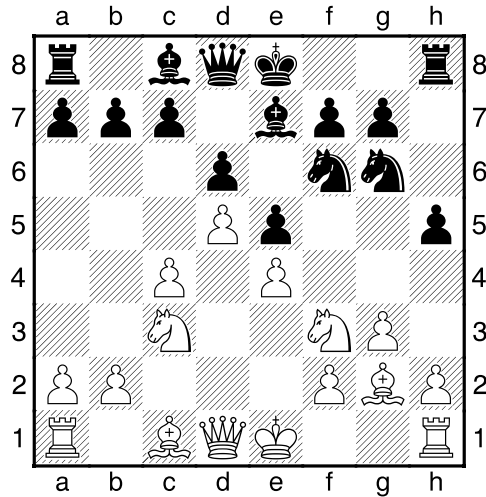
2012 MI Masters/Experts/Class - Lansing, MI (1), 14.12.2011 *[Notes by Alan Gregg]*

The start of the Michigan M/X in Lansing. My first round opponent was David Hahn. I last played him in the 2011 Michigan Open which was drawn, but with his 2135 rating and having the Black pieces, I knew it wasn't going to be easy.

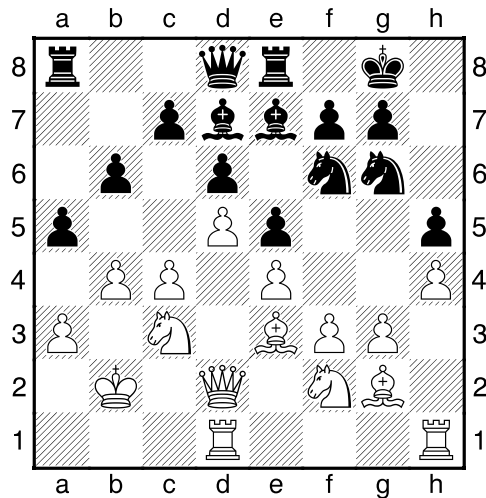
**1.c4 Nf6 2.Nc3 d6 3.d4 e5 4.Nf3 Nc6** Diagram



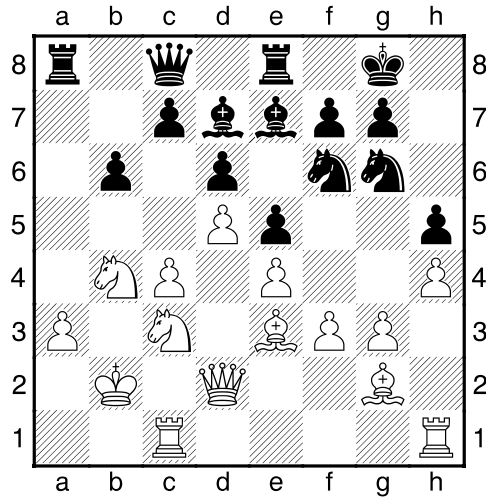
[I don't know much about this opening. There are various try's here with the more normal being [4...Nbd7] **5.d5 Ne7 6.e4 Ng6 7.g3 Be7 8.Bg2 h5** Diagram



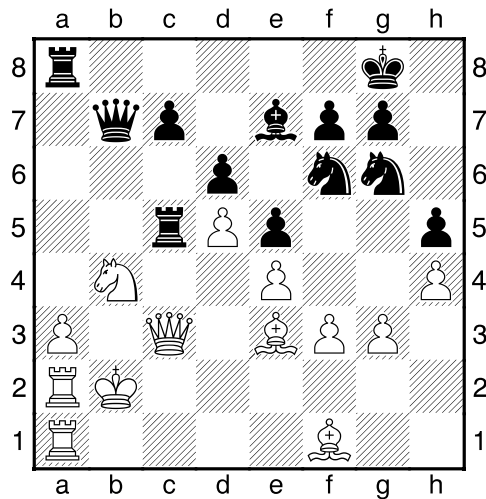
A little ambitious [8...0-0] **9.h4 0-0** [9...Bg4 10.Qb3 Qc8 11.0-0 0-0] **10.Ng5 Bg4** [I want him to play f3 to take the pressure of h5.] **11.f3 Bd7 12.Be3 Re8 13.Qd2 Nf8 14.0-0-0** [Let battle commence! White has more space, but the position is equal.] **14...a6 15.b4 b6** [15...b5 16.c5] **16.Kb2 N6h7 17.Nh3 a5 18.a3 Nf6 19.Nf2 Ng6** Diagram



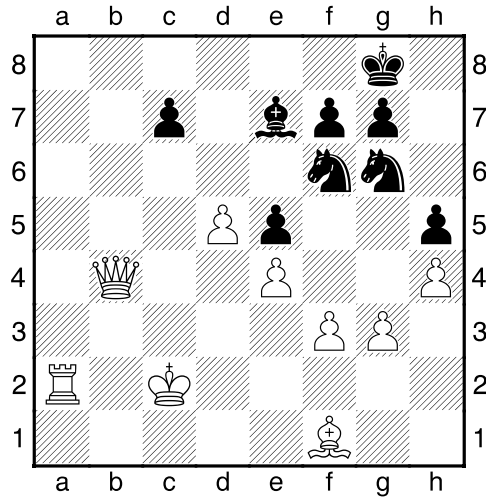
[White, if he wants to, can close the queenside and attack the kingside, but there is no clear way through and if he fails, I could possibly end up with a pass pawn on the king side. Most top players want action on both sides, so it's best to keep the tension.] **20.Nd3 Qc8 21.Rc1 axb4 22.Nxb4** Diagram



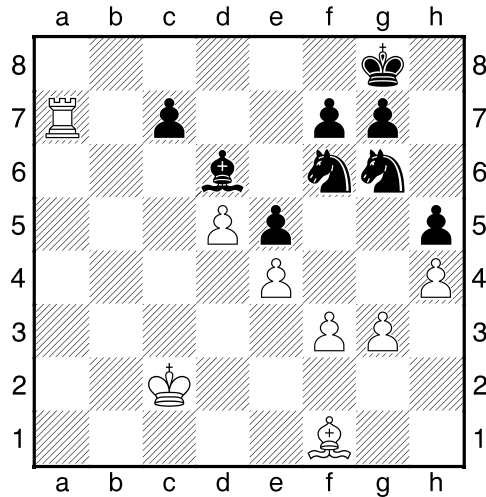
[22.axb4 Qa6 23.b5 Qa3+ with a unclear position 24.Kc2] **22...Qb7 23.Ra1 Ra5 24.Ra2 Rea8 25.Rha1 b5 26.cxb5 Bxb5 27.Nxb5 Qxb5 28.Bf1 Qb7 29.Bh3 Qb5 30.Bf1 Qb7 31.Qc3 Rc5** Diagram



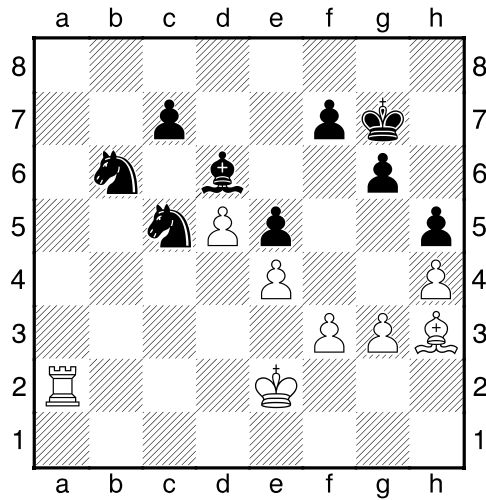
**32. Bxc5??** [In this critical position this the losing move - 32.Bc4 Nd7 33.Kc1 White is better] **32...dxc5 33.Kc2 cxb4 34.axb4 Rxa2+ 35.Rxa2 Qxb4 36.Qxb4** Diagram



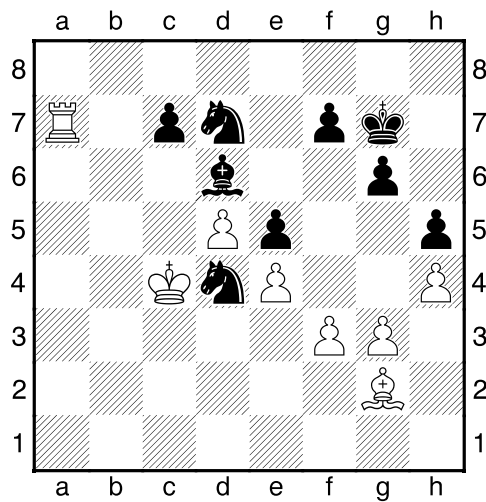
[36.Qxc7 Qe1 37.Bg2 Qxg3 38.Kd1 Nxh4 39.Qxe7 Nxg2 40.Ra8+ (40.Ra3 h4 41.d6 Qe1+ 42.Kc2 Ne3+ 43.Kd3 Qd1+ 44.Kxe3 Qd4+ 45.Ke2 Qb2+ 46.Ke1 Qxa3 47.Qxe5 Qe3+ 48.Kf1 Qxf3+ 49.Ke1 Qe3+ 50.Kd1 h3 51.Qe7 h2) 40...Kh7] **36...Bxb4 37.Ra7 Bd6** Diagram



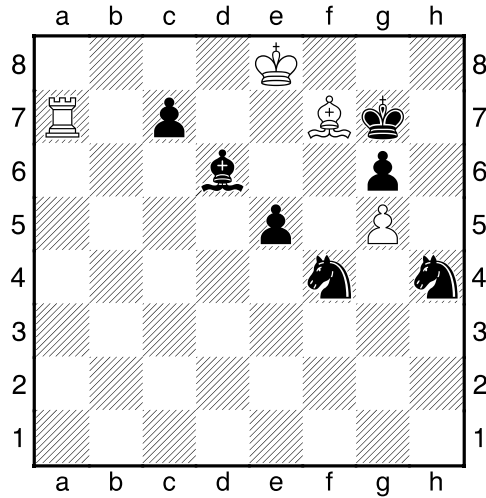
[This is now better for Black. If White can swap off all the pawns, the game is drawn.] **38.Bh3 Nf8 39.Kd3 N8d7 40.Ke2 g6 41.Ra8+ Kg7 42.Ke3 Nb6 43.Ra2 Nfd7 44.Ke2 Nc5** Diagram



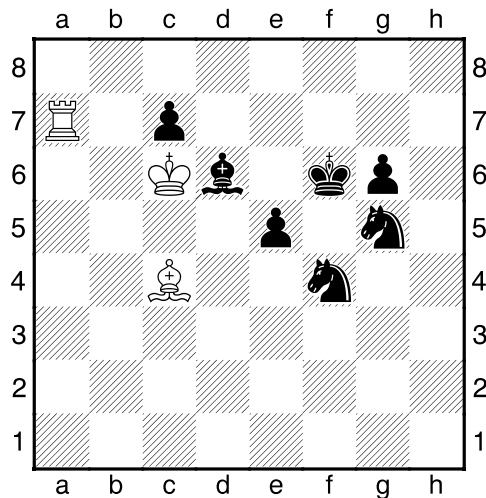
[The knights start working to undermine White. To win, I have to pick off some pawns. White should have stayed on the defensive and made me prove I can win.] **45.Ra7 Nb3 46.Bg2 Nd4+ 47.Kd3 Nd7 48.Kc4** Diagram



[Now White starts on a bad idea.] **48...Ne2 49.g4 Nf4 50.Bf1 hxg4 51.fxg4 Nf6 52.Kb5 Nxe4 53.Kc6 Nf6 54.g5 N6xd5 55.Bc4 Ne7+ 56.Kd7 Nf5 57.Ke8 Nxh4 58.Bxf7** Diagram



[White wins a pawn but at heavy cost.] **58...Nf3 59.Bc4 Nxf5 60.Kd7 Kf6 61.Kc6**  
Diagram



[We played another few moves and White resigned.] **0-1**

**Gregg, Alan (2030) - Ciaffone, Robert (2100) [B40] Sicilian Defense**

2012 MI Masters/Experts/Class - Lansing, MI (2), 14.12.2011

1.e4 c5 2.Nf3 e6 3.Nc3 a6 4.Be2 d6 5.0-0 Nf6 6.e5 dxe5 7.Nxe5 Qc7 8.Nf3 Nc6 9.d4 cxd4 10.Nxd4 Bd7 11.Nxc6 Bxc6 12.Bf3 Be7 13.Bxc6+ Qxc6 14.Qe2 0-0 15.Be3 b5 16.a3 Rab8 17.Rfd1 Rfc8 18.Rdc1 Rb7 19.Na2 Nd5 20.c3 Nxe3 21.Qxe3 a5 22.Rd1 Bf6 23.Nc1 b4 24.axb4 axb4 25.Ne2 bxc3 26.bxc3 Rbc7 27.Rd3 h6 28.Rad1 Qa6 29.g3 Rc4 30.Rd7 Qc6 31.Qa7 Qf3 32.Qe3 Qxe3 33.fxe3 Bxc3 34.Rb1 Be5 35.Rbb7 R4c7 36.Kf2 g6 37.Rdxc7 Rxc7 38.Rxc7 Bxc7 1/2-1/2

**Alan Greg (2030) - Kevin Czuhai (2200) A37 Symmetrical English**

2012 MI Masters/Experts/Class - Lansing, MI (4), 15.12.2011

1.Nf3 c5 2.c4 Nc6 3.Nc3 g6 4.g3 Bg7 5.Bg2 d6 6.0-0 Bg4 7.h3 Be6 8.d3 Qc8 9.Kh2 h5  
10.Nd5 h4 11.Nxh4 Nf6 12.f4 Qd7 13.e4 Bxd5 14.cxd5 Nd4 15.Be3 Nh5 16.Nf3 0-0-0  
17.Nxd4 cxd4 18.Bf2 g5 19.Be1 gxf4 20.gxf4 Nxf4 21.Rxf4 Be5 22.Bg3 Rdg8 23.Qc2+  
Kb8 24.Raf1 Bxf4 25.Rxf4 Rg7 26.Qf2 Qa4 27.Rf3 Rhg8 28.e5 Qb4 29.exd6 exd6  
30.Rxf7 Rxf7 31.Qxf7 Rd8 32.Qf6 Rd7 33.Bf2 Qb6 34.Qxd4 Qa5 35.a3 b6 36.Qc3 Qa6  
37.Bg3 b5 38.Qc6 Qxc6 39.dxc6 Rd8 40.d4 Kc7 41.Be1 Re8 42.Ba5+ Kb8 43.d5 Re2  
44.b4 Ra2 45.h4 a6 46.h5 Re2 47.c7+ Ka7 48.c8N+ Kb8 49.Nxd6 Re5 50.Bf3 Rg5  
51.Kh3 Ka7 52.Kh4 Rg1 53.Bg4 Rh1+ 54.Kg5 Rh2 55.Nf5 Rd2 56.d6 Kb7 57.h6 Rh2  
58.d7 1-0

### **Shetty,Atulya (2302) - Gregg,Alan (2030) [C54] Giuoco Piano**

2012 MI Masters/Experts/Class - Lansing, MI (5), 15.12.2011

1.e4 e5 2.Nf3 Nc6 3.Bc4 Bc5 4.c3 Nf6 5.d3 0-0 6.0-0 [6.a4] 6...Be7 7.a4 d6 8.a5 a6  
9.h3 Nb8 10.Re1 c5 11.b4 Nc6 12.Bd2 Qc7 13.Qb3 b5 bad 14.axb6 Qxb6 15.bxc5  
Qxb3 16.Bxb3 dxc5 17.Ba4 Bd7 18.Bxc6 Bxc6 19.Nxe5 Rfc8 20.Na3 Be8 21.Nac4 Rd8  
22.Be3 Bb5 23.Red1 Ne8 24.Nb6 Rab8 25.Nd5 Bd6 26.f4 f6 27.Nf3 c4 28.Nd2 cxd3  
29.c4 Bc6 30.Rxa6 Bxd5 31.cxd5 Nc7 32.Rc6 Nb5 33.Nf3 Bf8 34.Rxd3 Nd6 35.e5 Nf5  
36.d6 Ng3 37.Bb6 Ne2+ 38.Kh2 Nxf4 39.Rd1 Rd7 40.Rc7 Rxb6 41.Rxd7 Rb2 42.Rd2  
Rxd2 43.Nxd2 fxe5 44.Rd8 Ne6 45.Re8 Nc5 46.Ne4 Nd7 47.Rd8 Nf6 48.Nxf6+ gxf6  
49.d7 Kf7 50.Rxf8+ Kxf8 51.d8Q+ 1-0

### **Lonnie Rutkofske (1805) - Jacob Fortuna (1903) A07 Reti Opening**

2012 MI Masters/Experts/Class - Lansing, MI (1), 14.12.2011

1.Nf3 Nf6 2.g3 g6 3.Bg2 Bg7 4.d3 d5 5.0-0 0-0 6.Nbd2 c6 7.c3 Nbd7 8.e4 e5 9.h3 h6  
10.Qc2 Re8 11.Nh2 dxe4 12.dxe4 Nc5 13.b3 b6 14.Rd1 Qc7 15.Nc4 Be6 16.Nb2 Rad8  
17.Be3 Ncd7 18.Rd2 Nf8 19.Rad1 Rxd2 20.Qxd2 Kh7 21.Qe2 Qc8 22.g4 g5 23.Nf1 Ng6  
24.f3 Nf4 25.Qc2 Kg8 26.Ng3 Rd8 27.Bf1 Nd7 28.Nf5 Bxf5 29.exf5 Nf6 30.Bxf4 exf4  
31.Nd3 Nd5 32.Nf2 Nxc3 33.Rd2 Rxd2 34.Qxd2 Qe8 35.Qd6 Nxa2 36.Ne4 Nc3 37.f6  
Nxe4 38.fxe4 Bf8 39.Qd3 Qe5 40.Qd8 Qxe4 41.Bd3 Qe3+ 42.Kh2 Qg3+ 43.Kh1 Qxh3+  
44.Kg1 Qxg4+ 45.Kh1 f3 0-1

### **Virginia Vandenburg (1867) - Lonnie Rutkofske (1805) B01 Scandinavian Defense**

2012 MI Masters/Experts/Class - Lansing, MI (2), 14.12.2011

1.e4 d5 2.exd5 Nf6 3.d4 Nxd5 4.Nf3 g6 5.c4 Nb6 6.Nc3 Bg7 7.Be3 0-0 8.Be2 Nc6  
9.Qd2 Re8 10.0-0 Bg4 11.Rfd1 Bxf3 12.gxf3 e5 13.dxe5 Nxe5 14.Qc2 Qh4 15.Rd4  
Nxf3+ 0-1

### **Lonnie Rutkofske (1805) - Gary Kitts (1888) A07 Reti Opening**

2012 MI Masters/Experts/Class - Lansing, MI (4), 15.12.2011

1.Nf3 Nc6 2.g3 e5 3.d3 Nf6 4.Bg2 d5 5.Nbd2 Bc5 6.0-0 0-0 7.h3 Bf5 8.c3 Bb6 9.Qa4  
h6 10.Kh2 Re8 11.Nh4 Bh7 12.e4 d4 13.c4 a5 14.a3 Nd7 15.Qd1 Nc5 16.Ndf3 a4  
17.Rb1 Qf6 18.g4 g5 19.Nf5 Bxf5 20.gxf5 Na5 21.Rg1 Kh7 22.Bf1 Rg8 23.Nxg5+ hxg5  
24.Qh5+ Qh6 25.Qxf7+ Rg7 26.Qd5 Qh4 27.Rg3 Nc6 28.Be2 Rd8 29.f6 Rxd5 30.cxd5  
Rg6 31.dxc6 Draw Agreed

### **Tony West (1916) - Lonnie Rutkofske (1805) A80 Dutch Defense**

2012 MI Masters/Experts/Class - Lansing, MI (5), 15.12.2011

1.d4 f5 2.Nc3 Nf6 3.Bg5 c6 4.Bxf6 exf6 5.e3 d5 6.Bd3 g6 7.Qf3 Be6 8.Nge2 Nd7 9.Nf4  
Bf7 10.0-0-0 Qc7 11.h4 0-0-0 12.h5 Bd6 13.g3 Kb8 14.g4 g5 15.Ng2 ffg4 16.Qxg4  
Rdf8 17.Ne2 Qd8 18.f4 h6 19.Ng3 Bc7 20.Bg6 Qe8 21.Bxf7 Rxf7 22.Nf5 Qf8 23.Rd3  
Nb6 Draw Agreed

**Bedy,Noel (1395) - Wood,Nathan (1310) [D00] Queen Pawn Game**

2012 MI Masters/Experts/Class - Lansing, MI (1), 15.12.2011

1.d4 d5 2.e4 dxe4 3.Nc3 Nf6 4.f3 Bf5 5.fxe4 Nxe4 6.Qf3 Nd6 7.Bf4 Nc6 8.Bb5 Bd7 9.Nge2 g6 10.0-0 Bg7 11.Bxd6 cxd6 12.Qxf7# 1-0

**Das,Ayush (1289) - Bedy,Noel (1395) [B02] Alekhine's Defense**

2012 MI Masters/Experts/Class - Lansing, MI (2), 15.12.2011

1.e4 d5 2.exd5 Nf6 3.Nf3 Bg4 4.Be2 Nxd5 5.Nc3 e6 6.d4 Be7 7.0-0 c6 8.Ne5 Bxe2 9.Qxe2 Nd7 10.Nxd7 Qxd7 11.Nxd5 cxd5 12.Bf4 Bd6 13.Bxd6 Qxd6 14.c4 dxc4 15.Qxc4 Rc8 16.Qd3 0-0 17.Rac1 Qd7 18.h3 g6 19.Rfd1 Rfd8 20.Rc3 1/2-1/2

**Bedy,Noel (1395) - Hodges,Larry (1268) [D00] Queen Pawn Game**

2012 MI Masters/Experts/Class - Lansing, MI (4), 15.12.2011

1.d4 d5 2.e4 dxe4 3.Nc3 Nf6 4.f3 exf3 5.Nxf3 e6 6.Bd3 Bb4 7.Bg5 Be7 8.0-0 0-0 9.Qe1 Nbd7 10.Qh4 Re8 11.Ne5 Nf8 12.Rf3 Ng6 13.Bxg6 fxe6 14.Rh3 Nh5 15.Bxe7 Qxe7 16.Qxe7 Rxe7 17.Rf3 Bd7 18.g4 Nf6 19.g5 Nh5 20.Raf1 Bc6 21.R3f2 Rd8 22.Rf7 Rde8 23.b3 a6 24.b4 Rxf7 25.Rxf7 Rc8 26.Kf2 Rf8 27.Rxf8+ Kxf8 28.Nxc6 bxc6 29.Kf3 Ke7 30.Ne4 h6 31.gxh6 gxh6 32.Nc5 Ng7 33.Nxa6 Kd6 34.Nc5 Kd5 35.a4 Ne8 36.Ke3 e5 37.dxe5 Kxe5 38.c4 Nf6 39.a5 Kd6 40.a6 1-0

**Lee,Robert (1266) - Bedy,Noel (1395) [B01] Scandinavian Defense**

2012 MI Masters/Experts/Class - Lansing, MI (5), 15.12.2011

1.e4 d5 2.exd5 Nf6 3.d4 Bg4 4.f3 Bf5 5.Bd3 Qxd5 6.Ne2 Bxd3 7.Qxd3 e6 8.Nbc3 Qd7 9.Be3 c6 10.Ne4 Be7 11.Nxf6+ Bxf6 12.0-0-0 Na6 13.a3 Nc7 14.g4 0-0-0 15.g5 Be7 16.h4 Qd5 17.Nc3 Qxf3 18.Rdf1 Qh5 19.Bf4 Bd6 20.Ne2 Qg6 21.Qxg6 fxe6 22.Bxd6 Rxd6 23.Rf7 Rd7 24.Rhf1 Rd5 25.Rf8+ Rd8 26.R8f7 Rd5 27.Rf8+ Rd8 1/2-1/2

**PHCC Rating List**

The following list represents only current members of the Port Huron Chess Club. Current USCF ratings were used for members that had them, in order to establish the initial club rating list. The USCF rating format is used as the basis for calculating our club rating list. Members that had no USCF ratings are given a provisional rating based on their performances against regular club members who had USCF ratings. Club rated events will use these ratings for pairing purposes.

**PHCC Rating List as of 1/7/12**

Name	Rating
Gregg, Alan	1957
Rutkofske, Lon	1851
Morabito, Matt	1760
Broyles, Tom	1736
Wingrove, Bill	1726
Roome, Eric	1641
Bedy, Noel	1603
Oriel, Paul	1569
Jones, G. Avery	1532
Chan, Jaime	1502
Boucher, Dave	1404
Krazyca, Jay	1000
Sienkiewicz, John	1000

**USCF Ratings as of 1/7/12**

Name	Rating
Gregg, Alan	2030
Rutkofske, Lon	1805
Morabito, Matt	1766
Broyles, Tom	1737
Wingrove, Bill	1694
Roome, Eric	1546
Chan, Jaime	1519
Jones, G.Avery	1505
Bedy, Noel	1395
Boucher, Dave	1277

**PHCC Speed Rating List as of 1/7/12**

Name	Rating
Gregg, Alan	1971
Rutkofske, Lon	1911
Roome, Eric	1721
Morabito, Matt	1668
Wingrove, Bill	1588
Bedy, Noel	1529
Jones, G. Avery	1485
Matt Hartson	750
Ferguson, Gabe	750



## Calendar of Events:

**First Thursday of Each Month - Chess Clinics**– 6:30 to 8:00 PM - \$7.50 per person

**January 12 – March 22, 2012 PHCC Championships:**

**March 17 – PHASD Chess Championships – Port Huron High School Cafeteria, Open free to all Port Huron Area School Students – begins at 8:00 AM - See flyer below!**

## Dues News:

While dues are not required for anyone interested in playing at the club, they are required for those competing in tournament play. Annual Dues are \$20.00 for adults and \$10.00 for those under 19. Dues funds are used to offset miscellaneous expenses not funded by the Recreation Department.

**Port Huron Area School District's  
16th Annual Chess Tournament**

**Saturday, March 17, 2012**  
8:00 a.m. - 1:00 p.m.  
Port Huron High School Cafeteria

**REGISTRATION WILL TAKE PLACE FROM:  
8:00 - 8:30 a.m.  
NO LATE REGISTRATIONS ACCEPTED**

Open Tournament - FREE to all  
Port Huron Area School District students  
In grades Kindergarten through 12th

Time limit 15 minutes per player  
per round (Game in 30 minutes)

Prizes will be awarded according to  
the following grade classifications:  
Kdg, 1, 2, 3, 4, 5, 6, 7, 8, 9, 10, 11, 12  
(Grade classifications without a minimum  
of 4 players will be paired in the next  
highest grade classification.)

**5 Round Tournament**  
Round 1 - 9:00 a.m.    Round 2 - 9:45 a.m.  
Round 3 - 10:30 a.m.    Round 4 - 11:15 a.m.  
Round 5 - 12:00 p.m.

**Chess Sets will be provided**

Participants may bring their  
own refreshments.

Parents are responsible for  
the transportation and  
supervision of their children.