



# Chess Chatter

Newsletter of the Port Huron Chess Club

---

**Editor: Lon Rutkofske**      **March 2012**      **Vol.31. Number 3**

---

The **Port Huron Chess Club** meets Thursdays, except holidays, from 6:30-10:00 PM, at Palmer Park Recreation Center, 2829 Armour Street, (NE corner of Garfield Street and Gratiot Ave...1 mile North of the Blue Water Bridge) Port Huron, Michigan. Everyone is welcome. All equipment provided. Website: <http://porthuronchessclub.volasite.com>

---

## **Gregg Threepates! – It's 3 in a row for the Croswell Cabbie!**

**Alan Gregg** kept his unbeaten streak in tact, as he once again rolled over his opposition to another undefeated PHCC Championship Crown. The British juggernaut has been unstoppable of late, dropping only a handful of serious games to much higher rated players as he nears the 2100 rating mark. Complete details and scores to follow in the April issue of **Chess Chatter**.



## **A new name for the annual PHASD Chess Tournament?**

Lon Rutkofske has made a proposal to Robin Moser of the PHASD that would facilitate a change in the moniker of the annual district chess tournament. Lon has suggested that the tournament be renamed **The Phil Willard Memorial Chess Tournament** recognizing the contributions of long-time chess club member, volunteer and benefactor, **Phil Willard** who passed away October 18, 2010. Initiated in 1996 by then Director of Secondary Curriculum, Lon Rutkofske, as a part of a Federal grant, the PHASD has graciously continued to sponsor the event each Spring for district students.

Phil's son, **Jeff** assumed the responsibilities of directing the competition after Lon left the district in June of 2000, with the support and encouragement of Phil and other district chess club sponsors that saw the educational and recreational value of chess in developing and demonstrating higher level thinking, performance and relationship skills for all involved – students, parents and teachers. Perhaps the greatest aspect of chess is its ability to equalize opportunities for all – gender, age, physical maturity, size, even educational experience, vanish when one takes a seat at the board.

This year's celebration will take place on Saturday, March 17, in the cafeteria at Port Huron High School (See flyer on page 9). I am certain **Jeff** will be anticipating his regular turnout of 100+ participants, but this year's event may be an opportunity for him to orchestrate an endeavor that will be even closer to his heart!

### **PHCC and SCCC to make presentations to the Port Huron Museum's Toy Tech (The science of fun.) program.**

Members of the Port Huron and St. Clair Chess Clubs have been invited by Katherine Bancroft, Director of Collections, Education and Exhibits for the Port Huron Museum, to participate in its Toy Tech-the science of fun- program. To be hosted in the basement (Studio Gallery) of the museum on Saturday, March 24<sup>th</sup>, beginning at 1:00PM, the presentation will feature an hour long presentation on chess, designed to introduce, test, titillate, inspire and motivate those that may be interested in the "noble game". Everyone is welcome, so pack up your curiosity for an "Afternoon at the Museum"!

### **Bedy continues to roll: Ties for Top C at the Universal Late Winter Swiss in Warren**



**Noel Bedy** has been on a tear of late, scorching the opposition with 6 of 8 points in this year's Club Championships thus far and he continued his winning ways by notching three wins (See below) on his way to \$45 and a tie for top C prize in the Universal Late Winter Classic at All the King's Men in Warren on March 3<sup>rd</sup>/4<sup>th</sup>, dropping contests to 1869 and 1745 rated players respectively. Noel has always been a resourceful, creative player whose penchant for getting himself into time trouble has been the only barrier that has kept him from firmly establishing himself as a solid class B player.

**Boudin,Mohammed (1228) - Bedy,Noel (1412) [B01] Scandinavian Defense**

Universal Late Winter Swiss - Warren, MI (2), 03.03.2012

1.e4 d5 2.exd5 Nf6 3.c4 e6 4.dxe6 Bxe6 5.Nf3 Qe7 6.Qe2 Nc6 7.a3 0-0-0 8.Ng5 Nd4 9.Qd3 Bf5+ 10.Ne4 Bxe4 11.Qc3 Bf3+ 12.Qe3 Nc2# 0-1

**Bedy,Noel (1412) - Mitchel,Paul (1363) [B13] Caro-Kann: Exchange Var.**

Universal Late Winter Swiss - Warren, MI (3), 04.03.2012

1.d4 d5 2.e4 c6 3.exd5 cxd5 4.Bd3 Nf6 5.c3 e6 6.Nf3 Be7 7.0-0 Nc6 8.Bf4 Bd7 9.Re1 a6 10.Nbd2 Na7 11.a4 b5 12.Ne5 bxa4 13.Nxd7 Qxd7 14.Qxa4 Nc6 15.Bb5 Rc8 16.Qxa6 0-0 17.Nf3 Nh5 18.Ne5 Qc7 19.Nxc6 Nxf4 20.Nxe7+ Qxe7 21.Bf1 Ng6 22.Qd3 Qg5 23.Kh1 Qe7 24.g3 Qb7 25.Qb5 Qc7 26.Qd3 Qb7 27.Rab1 Ra8 28.Bg2 Ne7 29.b4 Ra3 30.Qc2 Rfa8 31.Rb2 Qc7 32.c4 Ra1 33.Reb1 Rxb1+ 34.Rxb1 Rc8 35.c5 Nf5 36.Qd2 Ra8 37.Qd1 Ne7 38.b5 Rb8 39.b6 Qb7 40.Bf1 Nc6 41.Ra1 Ra8 42.Rxa8+ Qxa8 43.Bb5 Nb8 44.Qa4 Qxa4 45.Bxa4 Kf8 46.c6 Ke7 47.c7 Nd7 48.c8Q Nxb6 49.Qb7+ 1-0

**O'Neil,Brandon (1649) - Bedy,Noel (1412) [E06] Closed Catalan**

Universal Late Winter Swiss - Warren, MI (5), 04.03.2012

1.d4 d5 2.c4 e6 3.Nf3 Nf6 4.g3 Be7 5.Bg2 0-0 6.0-0 c6 7.Qc2 Qc7 8.Bf4 Bd6 9.Bxd6 Qxd6 10.Nbd2 Nbd7 11.Rfd1 Re8 12.e3 e5 13.cxd5 cxd5 14.dxe5 Nxe5 15.Nd4 Bg4 16.f3 Rac8 17.Qb3 Bd7 18.Kf2 Rc7 19.e4 dxe4 20.Nxe4 Nxe4+ 21.fxe4 Qe7 22.Rac1 Rec8 23.Rc2 Rxc2+ 24.Nxc2 Bg4 25.Rd2 h6 26.Ne3 Be6 27.Qd1 a6 28.a3 Kh7 29.Nf5 Qc5+ 30.Nd4 Bg4 31.Qc2 Qxd4+ 32.Rxd4 Rxc2+ 33.Kf1 Rxb2 34.h3 Be6 35.g4 Rb3 36.a4 Bc4+ 37.Ke1 Rd3 38.Rxd3 Bxd3 39.Kd2 Kg6 40.Kc3 b5 41.axb5 axb5 42.Kd4 f6 43.Kc5 Kg5 0-1

## Members' Games

*Please send me what you consider your best games, annotated or not, so that I might be able to showcase them. The following games represent contests that have been available at the time of this printing. Email them to me or give them to me personally, if you wish. Majority of analyses is done by Fritz 12, unless otherwise indicated.*

Here is one of those rare games where two of the club's members clash in a USCF tournament.

Think draws are boring? Then play over this humdinger played in the Lasker Open, May 1986.

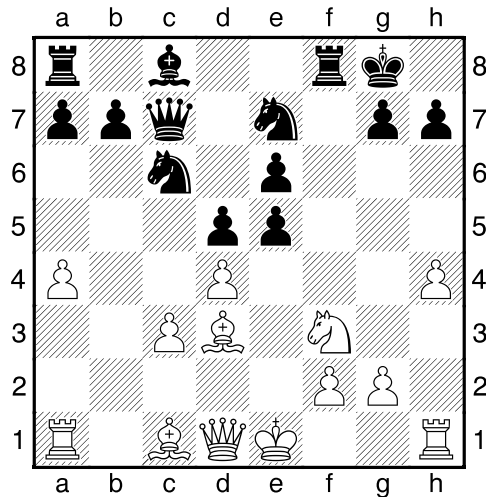
Reprinted from *Challenge Chess* from Vol.13. No. 8 December 1986 issue of **Chess Chatter**. Notes by Tim Gillion.

**Gillion,Tim 1781 - Wilkinson,Stew UNR [C19] French Defense: Winawer Variation**

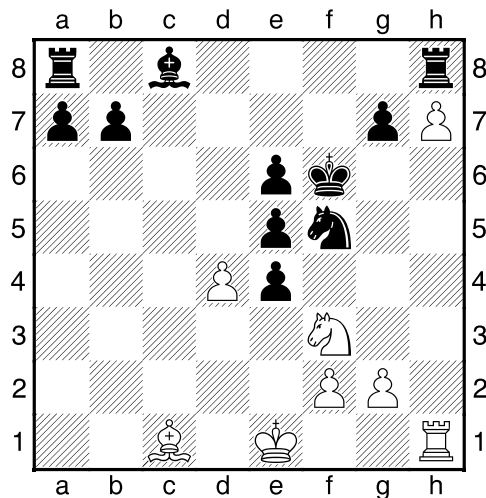
1986 Edward Lasker Open, East Detroit,(4)18.05.1986 [Tim Gillion]

1.e4 e6 2.d4 d5 3.Nc3 Bb4 4.e5 c5 5.a3 Bxc3+ 6.bxc3 Qc7 7.Nf3 Ne7 8.a4 cxd4?! Releasing the central tension is not best. This was one of Stu's earliest tournament games with the Winawer and it shows. He has since considerably refined his handling of this opening, as his run of tournament victories shows. Better are 8 ... Nc6 and 8 ... b6. 9.cxd4 Nbc6 10.c3 0-0 10 ... Bd7 retaining options, is more prudent. White

rapidly stirs up a kingside attack. **11.Bd3 f6** Black smells a Bxh7 attack. **12.h4 fxe5**  
Diagram

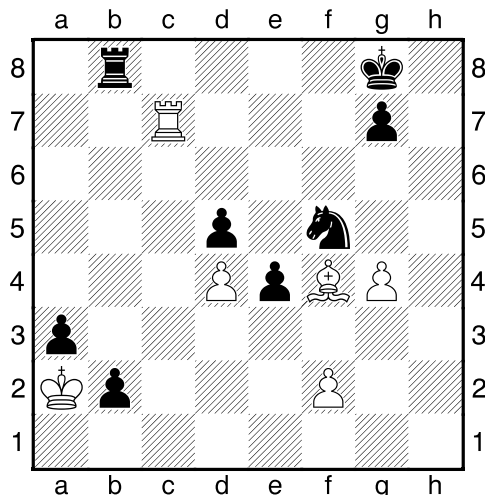


And allows it anyway! Black is banking on the c-file and White's uncastled King. Safer is 12 ... f5 , buying time as White must attend to his king. For example, 12 .. , f5 13 Ng5 Nxd4 14. Qh5 h6. **13.Bxh7+!** Take that ! Don't mind if I do. (What choice is there?) **13...Kxh7 14.Ng5+** This is the critical defense. **14...Kg6** 14 ... Kg8 15. Qh5 leads to mate wherever the rook moves. 1) 15 ... Rd8 16. Ba3 (threat: Qh7+ followed by Qh8 mate) Rd6 17. Qe8# 2) 15 ... Rf6 16. Ba3 Rh6 17. Qe8# 3) 15 ... Rf5 16. Ba3 Rxf5 17. Qe8+ Kh7 18. hxg5# **15.h5+ Kf6 16.h6** 16. Nh7+ Kf7 17. Qf3+ Nf5 18. Nxf8 Kxf8 19. h6 is much stronger , as the c-pawn is defended and White's king rook comes quickly into play. After 16. h6, Black pins the h-pawn **16...Rh8 17.Qg4 Nf5 18.h7 Ncxd4! 19.cxd4 Qc3+ 20.Kd1 Qxa1 21.Nf3 Qxa4+ 22.Ke1 Qb4+ 23.Kd1 Qb3+ 24.Ke1 Qc3+ 25.Kd1 Qd3+ 26.Ke1 Qe4+ 27.Qxe4 dxe4** Diagram



Black is up a rook and two passed connected queen-side pawns, with the queens off the board. But White still has a few shots left **28.Bg5+ Kf7 29.Nxe5+ Ke8 30.Ng6 Rxf7** So much for the rook, but the passers are in the starting blocks. **31.Rxf7 Kf7 32.Ne5+ Kg8 33.Rh3 a5 34.Kd2 b5 35.Kc3 Bb7** Finally, the queen-side pieces

awaken! **36.Kb2 Bd5 37.Ng6 Kf7 38.Ne5+ Kg8 39.Ng6 Nh6 40.Rc3 b4 41.Rc7 Nf5 42.Nf4 a4 43.g4 a3+ 44.Ka1 b3 45.Nxd5 b2+ 46.Ka2 exd5 47.Bf4 Rb8??** Diagram



Merry Christmas, Chris! 47 ... Nxd4 48 Be5 Nc2 should win as it looks like White must sacrifice his Bishop for the two pawns. **48.Rxg7+ Kxg7 49.Bxb8 Nxd4?** 49 ... e3 or 49 ... Nh6 is better. **50.Be5+ Kg6 51.Bxd4 Kg5 52.Bc5 Kxg4 53.Bxa3 d4 54.Bc5 d3 55.Kxb2 Kf3 56.Kc1 Ke2 57.Be3 Ke1 58.Bh6 Kxf2 59.Kd2** Drawn! I'm sure I've missed a few strong moves for both sides. ½-½

### Make-up game from 2012 PHCC Championships

#### **Bedy,Noel (1603) - Boucher,Dave (1404) [C01]French Defense: Exchange Variation**

2012 PHCC Championships (5), 22.02.2012

1.d4 d5 2.e4 e6 3.Nc3 Bb4 4.exd5 exd5 5.Bd3 Nf6 6.Nge2 Nc6 7.a3 Bxc3+ 8.bxc3 0-0 9.Bg5 a5 10.0-0 a4 11.Qc1 b6 12.Qf4 Re8 13.Rfe1 Ba6 14.Bxa6 Rxa6 15.Bxf6 gxf6 16.Qf5 Qd6 17.Nf4 Ne7 18.Qg4+ Kf8 19.Nh5 Ng6 20.Rxe8+ Kxe8 21.Qc8+ 1-0

### 2012 PHCC Championships – Round 7 Games

#### **Morabito,Matt (1760) - Ferguson,Gabe (500) [C47] 4 Knights' Game**

2012 PHCC Championships (7), 23.02.2012

1.e4 e5 2.Nf3 Nc6 3.Nc3 Nf6 4.d4 exd4 5.Nxd4 Bc5 6.Be3 Ng4 7.Qxg4 Bxd4 8.Bxd4 Nxd4 9.0-0-0 d6 10.Qxg7 Ne6 11.Qxh8+ Ke7 12.Qxd8+ Kxd8 13.e5 Ke7 14.exd6+ cxd6 15.Nd5+ Ke8 16.Be2 Ng7 17.Nc7+ Kd7 18.Nxa8 b6 19.Bb5+ Ke7 20.Rhe1+ Be6 21.Nc7 Kf6 22.Rxd6 h5 23.Nd5+ Kg6 24.Ne7+ Kf6 25.Ng8+ Kg6 26.Bd3+ Kg5 27.h3 h4 28.Re5+ Kf4 29.Re4+ Kg5 30.f4+ Kg6 31.Rexe6+ Kh5 32.Rh6# 1-0

#### **Jones,Avery (1532) - Bedy,Noel (1603) [D05] Queen's Pawn Game**

2012 PHCC Championships (7), 23.02.2012

1.d4 d5 2.Nf3 e6 3.e3 Nf6 4.Bd3 Nbd7 5.0-0 Bd6 6.Nbd2 b6 7.e4 dxe4 8.Nxe4 Bb7 9.Nxd6+ cxd6 10.Bg5 0-0 11.Qd2 Rc8 12.Rfe1 Re8 13.Rad1 Qc7 14.c3 Bd5 15.Bb1 Qb7 16.Qd3 b5 17.Bxf6 Nxf6 18.Ng5 g6 19.Qh3 Qe7 20.Qh4 Nh5 21.g4 h6 22.gxh5 hxg5 23.Qh3 Kg7 24.hxg6 Rh8 25.Qd3 Rh6 26.gxf7 g4 27.Qxb5 Qh4 28.Be4 Qxh2+ 29.Kf1 Bc4+ 30.Qxc4 Rxc4 31.Ke2 Qf4 32.Kd3 Rc7 33.Rh1 Rxh1 34.Rxh1 Rxf7 35.Rh7+ Kf6 0-1

**Wingrove,Bill (1726) - Boucher,Dave (1404) [C18] French Defense: Winawer Variation**

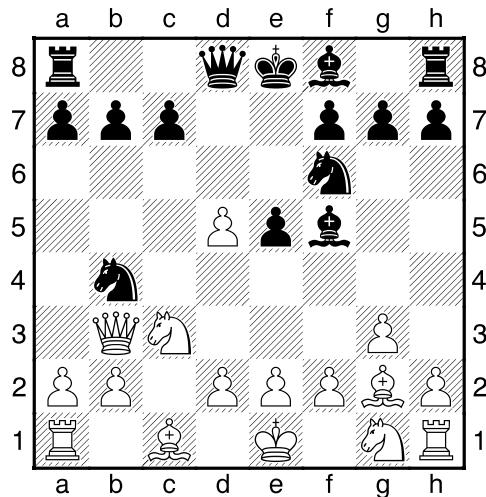
2012 PHCC Championships (7), 23.02.2012

1.e4 e6 2.d4 d5 3.Nc3 Bb4 4.e5 c5 5.a3 cxd4 6.axb4 dxc3 7.Nf3 Qc7 8.Qd4 cxb2 9.Bxb2 Ne7 10.Bd3 0-0 11.Bxh7+ Kxh7 12.Ng5+ Kg8 13.Qh4 Qxc2 14.Ra3 Qb1+ 15.Bc1 Qxc1+ 16.Ke2 Qc4+ 17.Qxc4 dxc4 18.Rc3 b5 19.Rd1 Nd5 20.Rh3 Nf4+ 0-1

**Rutkofske,Lonnie (1851) - Nowiski,Adam (500) [A25] English Opening**

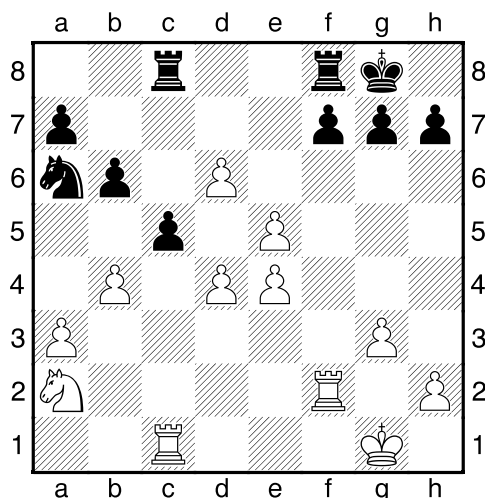
2012 PHCC Championships (7), 23.02.2012

**1.c4 e5 2.Nc3 Nf6 3.g3 Nc6 4.Bg2** I really feel that a better and more active line against this variation of the English would probably be 4....Bc5, since it aims at the weak f2 square, and if followed up with Ng4 and Qf3 can be dangerous for white. Also, Bc5 permits an early castle and the possibility of f5 early, placing more pressure on white's f2. **4...d5 5.cxd5 Nb4** This try seems the most logical to recoup the d5 pawn, and after 6.Qb3, a5 followed by the threat of a4 can pose tactical problems for White. **6.Qb3 Bf5!** Diagram



A good try for black, and white must be cautious because if 7.e4??? leads to Nd3+ and Nb1, leading to a serious disruption in White's game, and well worth the pawn. Again, a timely a5 is called for and can create a host of difficulties for White. **7.d3 Bd6?** 7....,Qc8 looks stronger because it is much more long range and threatens Bh3, if the Nf3 enters the game, while at the same time protecting the lose b7 pawn in from the eventual a3, forcing the retreat Na6. It looks like white has a great shot here with 8.a3, Na6, 9.Qb7...but Nc5 could lead to trapping the White Queen. 9.Qb7, Nc5 10.Qb5+, Bd7 **8.a3 Na6 9.Bg5 Nc5 10.Qd1 Be7 11.Bxf6 Bxf6 12.b4 Na6? 13.Rc1 Rc8 14.e4 Bd7 15.Nf3 Bg5??** Black should never surrender the Bishop pair in this situation. Best was the simply 15...00 with f5 as a follow up, since his Bishop's represent a long range threat against White's K side. White's KB is hitting hard against its own pawn center and at this point is basically out of play, thus equalizing the position. **16.Nxg5 Qxg5 17.0-0 Bg4?** This just grants White an additional tempo...00 was the best here followed by f5! **18.f3 Bd7 19.f4 Qg4 20.Bf3 Qh3** Here Black's pieces are becoming uncoordinated and simplifying is not the way to go now, especially since now, Black is two pawns down to a much higher rated player where liquidation only increases his potential of victory. **21.fxe5 0-0 22.Qd2 c6 23.d6 Bg4 24.Bxg4 Qxg4 25.Rf4 Qe6 26.d4 Qb3 27.Qa2 Qxa2 28.Nxa2 b6 29.Rf2** Now White's game plan is simple. All he has to do is to simplify and with two connected center

pawns, a win is easily secured. Never trade off Queens unnecessarily, when down material, since it erases your chances of getting back into the game and reduces your tactical options. **29...c5** Diagram



**30.Rfc2 Rfd8 31.b5 Nb8 32.dxc5 bxc5 33.Rxc5 Rxc5 34.Rxc5 Nd7 35.Rc7 Nxe5 36.Rxa7 Rc8 37.Nb4 Rc1+ 38.Kg2 Rc8 39.Nc6 Nxc6 40.bxc6 h6 41.d7 Rd8 42.c7 Rxd7 43.c8Q+ Rd8 44.Qxd8+ Kh7 45.h4 Kg6 46.g4 h5 47.Qg5+ Kh7 48.Qxh5+ Kg8 49.Ra8# 1-0**

## 2012 PHCC Championships – Round 8 Games

### Fiedler,Bob (1725) - Gregg,Alan (1957) [B56] Sicilian Defense

2012 PHCC Championships (7), 23.02.2012

1.e4 c5 2.Nf3 d6 3.Nc3 Nc6 4.d4 cxd4 5.Nxd4 Nf6 6.h3 g6 7.Bb5 Bd7 8.Nxc6 bxc6 9.Bd3 Bg7 10.0-0 0-0 11.Be3 Qa5 12.Bd2 Qb6 13.Be3 Qxb2 14.Bd4 Qb7 15.Rb1 Qc7 16.f4 e5 17.fxe5 dxe5 18.Bc5 Rfe8 19.Bc4 Be6 20.Bd6 Qa5 21.Bb4 Qb6+ 22.Kh1 Bxc4 23.Rf3 Rad8 24.Qe1 c5 25.Na4 Qc6 26.Nxc5 Bxa2 27.Ra1 Be6 28.Ra6 Qa8 29.Rfa3 Re7 30.Nxe6 Rxe6 31.Rxa7 Qxe4 32.Qxe4 Nxe4 33.Be7 Re8 34.Bb4 Bf8 35.Bxf8 Kxf8 36.Rf3 R6e7 37.Ra4 Nc5 38.Rc4 Rc7 39.Rfc3 e4 40.Re3 f5 41.g3 Ne6 42.Rxc7 Nxc7 43.Kg2 Nd5 44.Re1 Rc8 45.Rc1 Rxc2+ 46.Rxc2 Ne3+ 47.Kf2 Nxc2 48.h4 h5 49.Ke2 Ke7 50.Kd2 Nd4 51.Ke3 Ne6 52.Kd2 Kd6 53.Ke3 Kd5 0-1

### Gregg,Alan (1957) - Rutkofske,Lonnie (1851) [A00] Uncommon Opening

2012 PHCC Championships (8), 01.03.2012

1.g3 d5 2.Bg2 Nc6 3.d4 Bf5 4.a3 Be4 5.f3 Bg6 6.e3 e5 7.Ne2 f6 8.0-0 h5 9.Nbc3 Bf7 10.dxe5 fxe5 11.f4 e4 12.Nd4 Qf6 13.Ncb5 Bd6 14.Nxc6 bxc6 15.Nxd6+ cxd6 16.c4 Ne7 17.Rb1 0-0 18.b4 dxc4 19.Bxe4 Qe6 20.Bf3 Nd5 21.Qd4 Qg6 22.e4 Nb6 23.f5 Qf6 24.Qxf6 gxf6 25.Bf4 Rfd8 26.b5 c5 27.Rfd1 d5 28.exd5 Nxd5 29.Bxd5 Bxd5 30.Rbc1 Rac8 31.a4 Bf7 32.Rd6 Rxd6 33.Bxd6 Bd5 34.a5 Kf7 35.b6 axb6 36.axb6 Ke8 37.b7 Bxb7 38.Rxc4 Bd5 39.Rxc5 Rxc5 40.Bxc5 Be4 41.Bd4 Kf7 42.h3 Bxf5 ½-½

### Bedy,Noel (1603) - Wingrove,Bill (1726) [B21] Sicilian Defense: Smith Mora Gambit

2012 PHCC Championships (8), 01.03.2012

1.e4 c5 2.d4 cxd4 3.c3 dxc3 4.Nxc3 Nc6 5.Nf3 d6 6.Bc4 a6 7.e5 Nxe5 8.Nxe5 dxe5 9.Bxf7+ Kxf7 10.Qxd8 Nf6 11.Be3 e6 12.Qc7+ Kg6 13.Qxe5 Bb4 14.0-0 Re8 15.Rac1 Bd7 16.Ne4 Bc6 17.Qg5+ Kf7 18.Nxf6 gxf6 19.Qh5+ Kg8 20.Qg4+ Kf7 21.Qxb4 Rg8

22.Rxc6 bxc6 23.Qb7+ Kg6 24.Qxc6 e5 25.Rc1 Kf5 26.Qf3+ Ke6 27.Rc6+ Kd7 28.Qd5+ Ke7 29.Re6+ Kf7 30.Rxa6+ 1-0

**Ferguson,Gabe (500) - Fiedler,Bob (1725) [B51] Sicilian Defense: Rossolimo Attack**

2012 PHCC Championships (8), 01.03.2012

1.e4 c5 2.Nc3 Nc6 3.Bb5 d6 4.Nf3 a6 5.Bxc6+ bxc6 6.0-0 Nf6 7.d3 h6 8.Na4 Nd7 9.c3 Nb6 10.Bf4 e5 11.Be3 Bg4 12.Qb3 Bxf3 13.gxf3 Rb8 14.Kh1 Nd5 15.exd5 Rxb3 16.axb3 cxd5 17.c4 d4 18.Bd2 Qh4 19.Be1 Qh3 20.Kg1 Qxf3 21.Rc1 h5 22.Bd2 h4 23.Bg5 h3 24.Bh4 Qg2# 0-1

**Boucher,Dave (1760) - Morabito,Matt (1404) [B21] Sicilian Defense: Smith Mora Gambit**

2012 PHCC Championships (8), 01.03.2012

1.e4 c5 2.d4 cxd4 3.c3 d6 4.Nf3 e6 5.Nxd4 Nf6 6.Bb5+ Bd7 7.Qd3 Be7 8.0-0 a6 9.Bxd7+ Nbx7 10.f4 Nc5 11.Qg3 Ncxe4 12.Qxg7 Rg8 13.Qh6 Qb6 14.Nd2 Nxd2 15.Bxd2 Qxb2 16.Nf3 Qb6+ 17.Kh1 Ng4 18.Qxh7 Kd7 19.Rab1 Qc6 20.Nd4 Qd5 21.Rf3 Rh8 22.c4 Qxd4 23.Rxb7+ Kc6 24.Bc3 Qd1+ 0-1

## PHCC Rating List

The following list represents only current members of the Port Huron Chess Club. Current USCF ratings were used for members that had them, in order to establish the initial club rating list. The USCF rating format is used as the basis for calculating our club rating list. Members that had no USCF ratings are given a provisional rating based on their performances against regular club members who had USCF ratings. Club rated events will use these ratings for pairing purposes.

**PHCC Rating List as of 3/7/12**

Name	Rating
Gregg, Alan	1957
Rutkofske, Lon	1851
Wilkinson, Stew	1840
Morabito, Matt	1760
Broyles, Tom	1736
Wingrove, Bill	1726
Fiedler, Bob	1725
Roome, Eric	1641
Bedy, Noel	1603
Oriel, Paul	1569
Jones, G. Avery	1532
Chan, Jaime	1502
Boucher, Dave	1404
Krazyca, Jay	1000
Sienkiewicz, John	1000
Ferguson, Gabe	500
Nowiski, Adam	500
Hartson, Matt	500

**USCF Ratings as of 3/7/12**

Name	Rating
Gregg, Alan	2061
Wilkinson, Stew	1840
Rutkofske, Lon	1816
Fiedler, Robert	1769
Morabito, Matt	1766
Broyles, Tom	1737
Wingrove, Bill	1694
Roome, Eric	1546
Chan, Jaime	1519
Jones, G.Avery	1505
Bedy, Noel	1412
Boucher, Dave	1277

**PHCC Speed Rating List as of 3/7/12**

Name	Rating
Gregg, Alan	1971
Rutkofske, Lon	1911
Wilkinson, Stew	1865
Roome, Eric	1721
Morabito, Matt	1668
Fiedler, Robert	1640
Wingrove, Bill	1588
Bedy, Noel	1529
Jones, G. Avery	1485
Matt Hartson	750
Ferguson, Gabe	750
Nowiski, Adam	750



## Calendar of Events:

**First Thursday of Each Month - Chess Clinics– 6:30 to 8:00 PM - \$7.50 per person**

**January 12 – March 22, 2012 PHCC Championships:**

**March 17 – PHASD Chess Championships – Port Huron High School Cafeteria, Open free to all Port Huron Area School Students – begins at 8:00 AM - See flyer on page 10!**

## Dues News:

While dues are not required for anyone interested in playing at the club, they are required for those competing in tournament play. Annual Dues are \$20.00 for adults and \$10.00 for those under 19. Dues funds are used to offset miscellaneous expenses not funded by the Recreation Department.

**Port Huron Area School District's  
16th Annual Chess Tournament**

**Saturday, March 17, 2012**  
8:00 a.m. - 1:00 p.m.  
Port Huron High School Cafeteria

**REGISTRATION WILL TAKE PLACE FROM:  
8:00 - 8:30 a.m.  
NO LATE REGISTRATIONS ACCEPTED**

Open Tournament - FREE to all  
Port Huron Area School District students  
in grades Kindergarten through 12th

Time limit 15 minutes per player  
per round (Game in 30 minutes)

Prizes will be awarded according to  
the following grade classifications:  
Kdg, 1, 2, 3, 4, 5, 6, 7, 8, 9, 10, 11, 12  
(Grade classifications without a minimum  
of 4 players will be paired in the next  
highest grade classification.)

**5 Round Tournament**  
Round 1 - 9:00 a.m.    Round 2 - 9:45 a.m.  
Round 3 - 10:30 a.m.    Round 4 - 11:15 a.m.  
Round 5 - 12:00 p.m.

**Chess Sets will be provided**

Participants may bring their  
own refreshments.

Parents are responsible for  
the transportation and  
supervision of their children.