



# Chess Chatter

Newsletter of the Port Huron Chess Club

---

**Editor: Lon Rutkofske**      **May 2012**      **Vol.31. Number 5**

---

The **Port Huron Chess Club** meets Thursdays, except holidays, from 6:30-10:00 PM, at Palmer Park Recreation Center, 2829 Armour Street, (NE corner of Garfield Street and Gratiot Ave...1 mile North of the Blue Water Bridge) Port Huron, Michigan. Everyone is welcome. All equipment provided. Website: <http://porthuronchessclub.volasite.com>

---

## An Analysis of Alan Gregg's Opening Strategy – by Stew Wilkinson

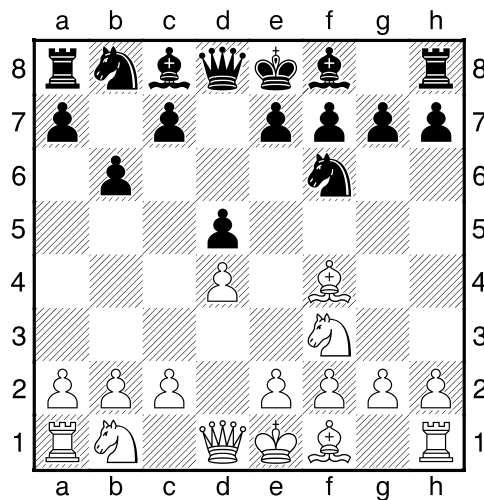
Alan Gregg won his third straight PHCC Championship in 2012. Opening Strategy played a key role in his title defense in the critical areas of: Variety - as he played e4, d4, c4, and even g3 as white, making preparation by his challengers a difficult proposition; Psychology – Alan prepared variations that might unsettle specific adversaries; Technique – the three time champion followed sound principles in his opening play (ie: quick development, central control, knowledge of theory) to reach solid middle game positions. However, he was also quick to exploit errors as shown in Rounds 2,3,4 and 7 to reach winning opening positions.

### **Gregg, Alan (1957) - Boucher, Dave (1404) [D02] Queen's Indian Defense**

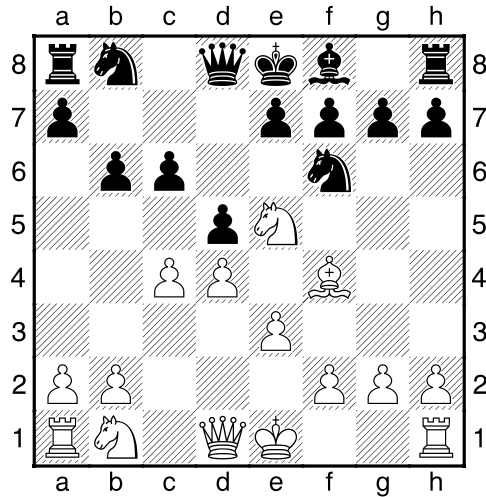
2012 PHCC Championships (2), 19.01.2012 [Stew Wilkinson]

**1.d4 d5 2.Nf3 b6?** (Too, slow, allowing White to develop a dangerous initiative.) **3.Bf4** (Well played. White develops and menaces Black's Queenside)

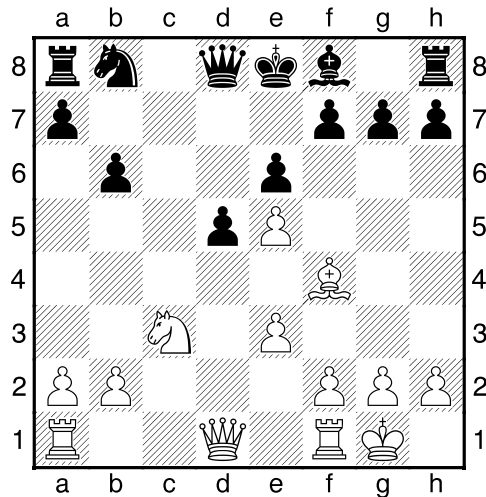
**3...Nf6?!** Diagram



(10...Ba6 should have been played first, now White takes control.) **4.e3 Ba6 5.Bxa6 Nxa6 6.c4!** ( Qa4 looms, and Black's Queenside is loose.) **6...c6 7.Ne5 Nb8** Diagram



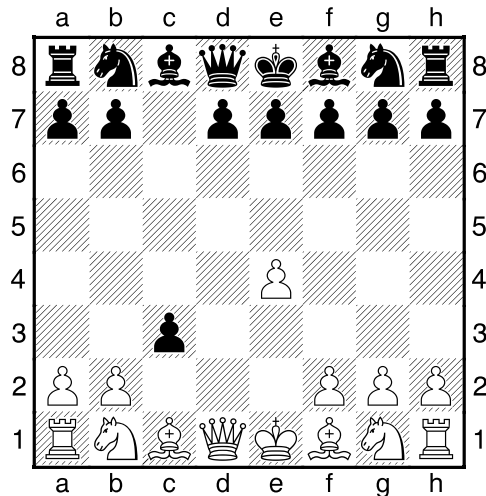
(Be ever so humble!) **8.Nc3 e6 9.0-0 Nfd7 10.cxd5 Nxe5 11.dxe5 cxd5** Diagram



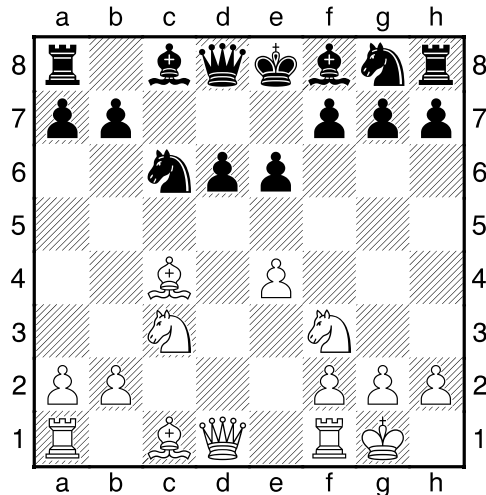
(In post game analyses, Alan explored many winning continuations. White has a massive lead in development and won quickly.) **12.e4 d4 13.Qa4+ Qd7 14.Nb5 Nc6 15.Rac1 Rc8 16.Rfd1 d3 17.Rc3 Bc5 18.Rdxd3 Bd4 19.Rxd4 Nxd4 20.Rxc8+ Qxc8 21.Nd6+** (Dave would have to agree that 2...b6? deserved reexamination!) **1-0**

**Bedy,Noel (1603) - Gregg,Alan (1957) [B21] Sicilian Defense-Smith/Morra Gambit**  
 2012 PHCC Championships (3), 26.01.2012 [*Stew Wilkinson*]

**1.e4 c5** (Alan went 3–0 with the Sicilian as Black in the tournament.) **2.d4 cxd4** **3.c3** (The gambit allows White to free development and avoids the Najdorf, Dragon and other Black weapons. However, White must find weaknesses to attack to avoid entering the middle game simply a pawn down.) **3...dxc3** Diagram

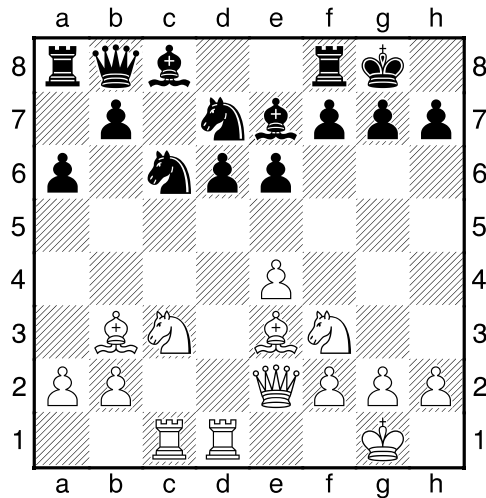


(One must accept a gambit to refute it; Black takes the pawn and looks to consolidate.) **4.Nxc3 Nc6** **5.Nf3 e6** **6.Bc4 d6** (Choosing a hedgehog system used by Korchnoi against Fischer, Buenos Aires, 1960) **7.0–0** Diagram



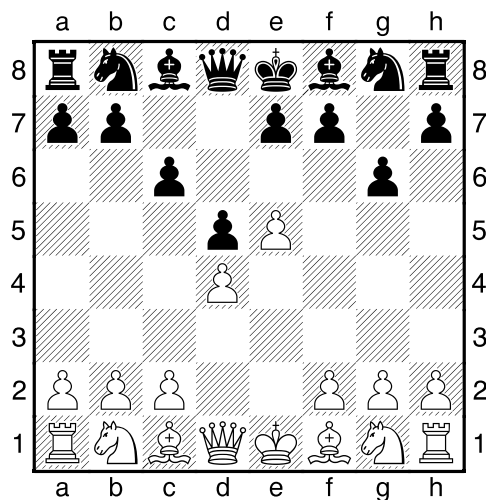
**7...a6** **8.Qe2 Qc7** **9.Bb3 Nf6** **10.Rd1 Be7** **11.Bf4 0–0** **12.Rac1 Qb8**  
 (Preventing Nd5, eyeing e5, but still needing to complete his development.)  
**13.Be3?!** (Noel played then variation well up to here. Seeing the hole on b6, then Bishop leaves an excellent diagonal. White has time for h3, giving the

Bishop a retreat square or Rd2 looking to double on either open file.) **13...Nd7!**  
Diagram



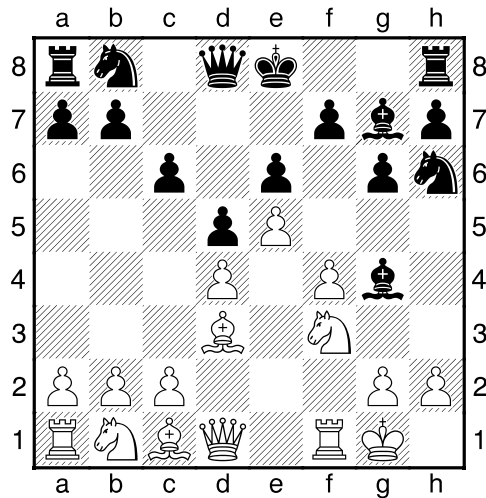
(b6 is secure, and White cannot immediately exploit the Knight's absence from the k-side.) **14.Bc2 Nce5** (Black soon consolidated and his extra pawn prevailed. an interesting opening for both players.) **15.Nd4 Nc6 16.Nf3 b5 17.Qd3 Nb4 18.Qe2 Nxc2 19.Rxc2 Bb7 20.Bg5 Bxg5 21.Nxg5 h6 22.Nh3 Nf6 23.Rdc1 d5 24.e5 Ne4 25.f4 Nxc3 26.Rxc3 Qa7+ 27.Kh1 Rac8 28.Ng1 Rc4 29.Rxc4 bxc4 30.Nf3 Rb8 31.Qd2 Qb6 32.Qc3 Bc8 33.Rc2 Bd7 34.Nd4 Qb4 35.Qe3 Ba4 36.Re2 Bb5 37.Rf2 Bd7 38.g4 Qa4 39.f5 Qd1+ 40.Kg2 Qxg4+ 41.Kh1 exf5 42.Rg2 Qe4 43.Qxh6 Qxg2+ 0-1**

**Gregg,Alan (1957) - Jones,Avery (1532) [B12] Caro-Kann: Advance Variation**  
2012 PHCC Championships (4), 02.02.2012 [Stew Wilkinson]  
**1.e4 c6 2.d4 d5 3.e5 g6?** Diagram

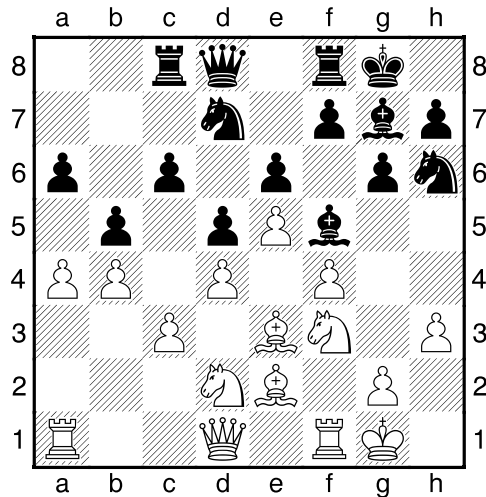


(The Caro-Kann Advance variation attempts to cramp Black's K-side. Here Avery plays into White's plans. The Black KB, has lost its usual retreat squares

at g6 and h7 and 3...Bf5 is recommended.) **4.Bd3 Bg7 5.f4! Nh6 6.Nf3 Bg4 7.0-0 e6?! Diagram**



(Further handcuffing the B on g4.) **8.c3 0-0 9.Be3 Nd7 10.Nbd2 Rc8 11.b4 b5 12.a4 a6 13.h3 Bf5 14.Be2! Diagram**

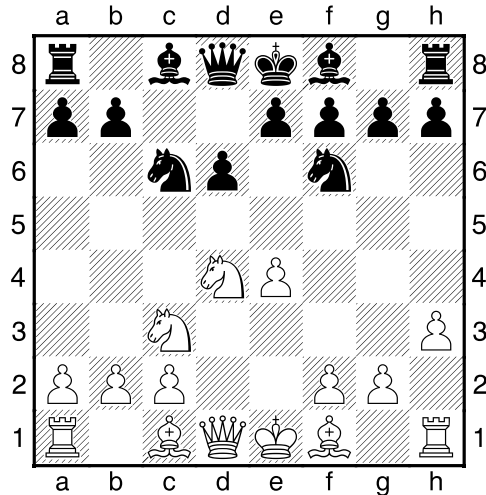


(Pressuring the B and Black is hard-pressed to find a plan to counter White's spatial edge and coordination. I am sure that Avery will try 3...Bf5 in future games.) **14...Nb6 15.a5 Nc4 16.Nxc4 dxc4 17.Ng5 Qd7 18.g4 Bd3 19.Bxd3 cxd3 20.Qxd3 Qd5 21.Ne4 f6 22.exf6 Bh8 23.Rae1 Nf7 24.Qc2 Nd6 25.Nxd6 Qxd6 26.g5 Rf7 27.Bc1 Qd5 28.Re5 Qd7 29.Qe4 h6 30.Qxg6+ Bg7 31.fxg7 Rxg7 32.Qxe6+ Qxe6 33.Rxe6 hxg5 34.fxg5 1-0**

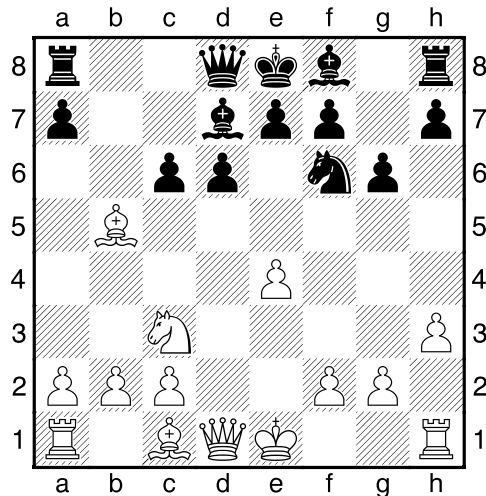
**Fiedler,Bob (1725) - Gregg,Alan (1957) [B56] Sicilian Dragon**

2012 PHCC Championships (7), 23.02.2012 [Stew Wilkinson]

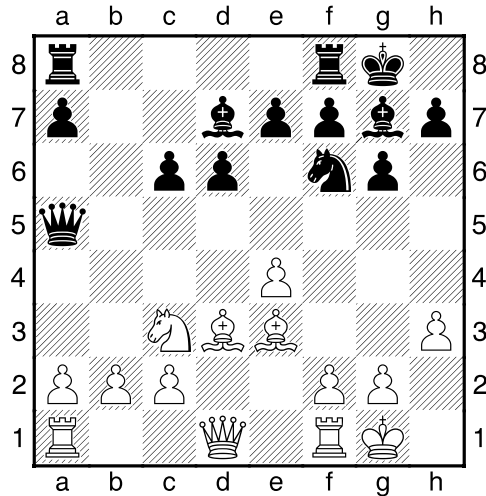
**1.e4 c5 ( Alan utilizes an old psychological ploy. Like Matt and Bill, Bob is familiar with the Black side of this opening. Here Alan tests Bob's level of comfort on the White side, quickly transposing into the sharp Dragon Variation.) 2.Nf3 d6 3.Nc3 Nc6 4.d4 cxd4 5.Nxd4 Nf6 6.h3?** Diagram



(Preventing invasion at 64, but losing a valuable tempo. The Dragon aims at White's Q-side and in some variations White plays h2–h4.) **6...g6! 7.Bb5 Bd7 8.Nxc6 bxc6** Diagram



(Correctly capturing with the pawn towards the center - target:b2!) **9.Bd3 Bg7 10.0-0 0-0 11.Be3 Qa5!** Diagram



(Bob defends well for 53 moves, but Black's position is already winning, and soon all of his forces converge on the Q-side.) **12.Bd2 Qb6 13.Be3 Qxb2 14.Bd4 Qb7 15.Rb1 Qc7 16.f4 e5 17.fxe5 dxe5 18.Bc5 Rfe8 19.Bc4 Be6 20.Bd6 Qa5 21.Bb4 Qb6+ 22.Kh1 Bxc4 23.Rf3 Rad8 24.Qe1 c5 25.Na4 Qc6 26.Nxc5 Bxa2 27.Ra1 Be6 28.Ra6 Qa8 29.Rfa3 Re7 30.Nxe6 Rxe6 31.Rxa7 Qxe4 32.Qxe4 Nxe4 33.Be7 Re8 34.Bb4 Bf8 35.Bxf8 Kxf8 36.Rf3 R6e7 37.Ra4 Nc5 38.Rc4 Rc7 39.Rfc3 e4 40.Re3 f5 41.g3 Ne6 42.Rxc7 Nxc7 43.Kg2 Nd5 44.Re1 Rc8 45.Rc1 Rxc2+ 46.Rxc2 Ne3+ 47.Kf2 Nxc2 48.h4 h5 49.Ke2 Ke7 50.Kd2 Nd4 51.Ke3 Ne6 52.Kd2 Kd6 53.Ke3 Kd5 0-1**

**Alan Gregg** was well-prepared for this year's PHCC Championships. His opening strategy was worthy of a champion: "Well-played and well-prepared, Alan!"

## Members' Games

*Please send me what you consider your best games, annotated or not, so that I might be able to showcase them. The following games represent contests that have been available at the time of this printing. Email them to me or give them to me personally, if you wish. Majority of analyses is done by Fritz 12, unless otherwise indicated.*

The following games represent those played by **Alan Gregg** at the Bournemouth Chess Congress – England : April 20-22, 2012 in which he scored 3/5 in a very strong open tournament. Nice going, Alan! (Alan's *British Chess Federation* rating of (est.)189 has been converted to its USCF equivalent.)

### **Charles, Cosmo (2140) - Gregg, Alan (2295) [B20] Sicilian Defense**

Bournemouth 2012 (1), 20.04.2012

1.e4 c5 2.b4 cxb4 3.a3 e5 4.axb4 Nf6 5.c3 Be7 6.d3 d5 7.Qc2 0-0 8.Bg5 d4 9.Bxf6 Bxf6 10.c4 Qb6 11.b5 Nd7 12.Nd2 Nc5 13.Be2 Bd7 14.Ngf3 Rfc8 15.Qb1 Ne6 16.g3 Nc5 17.h3 g6 18.g4 Ne6 19.h4 Nf4 20.g5 Bg7 21.Ng1 a6 22.h5 axb5 23.Rxa8 Rxa8 24.hxg6 hxg6 25.f3 Qa5 26.cxb5 Bxb5 27.Kf2 Bxd3 28.Qxb7 Bxe2 29.Nxe2 Nxe2 30.Kxe2 Qa6+ 31.Qxa6 Rxa6 32.Rb1 Rc6 33.Rb3 f6 34.gxf6 Bxf6 35.Kd3 Kg7 36.Nc4 Kh6 37.Rb6 Rxb6 38.Nxb6 Kg5 39.Nd7 Bh8

40.Nc5 Kf4 41.Ke2 Kg3 42.Nd3 g5 43.Nf2 Bg7 44.Nd3 g4 45.fxg4 Kxg4 46.Nb2 Kf4 47.Kd3 Bf8  
48.Nc4 Bc5 ½-½

### **Gregg,Alan (2295) - Ponter,Ian (2019) [C78] Ruy Lopez**

Bournemouth 2012 (2), 21.04.2012

1.e4 e5 2.Nf3 Nc6 3.Bb5 a6 4.Ba4 Nf6 5.0-0 b5 6.Bb3 Bc5 7.d3 d6 8.c3 0-0 9.Bg5 h6 10.Be3  
Bxe3 11.fxe3 Na5 12.Bc2 c5 13.Nbd2 Nc6 14.Qe2 Bg4 15.h3 Bd7 16.Qf2 Ne7 17.Nh4 Qc8  
18.Nf5 Nxf5 19.exf5 d5 20.g4 b4 21.c4 Bc6 22.e4 dxe4 23.dxe4 Qb7 24.Rfe1 Rac8 25.Re2 a5  
26.b3 Rfd8 27.Rae1 Qe7 28.Nf3 Nh7 29.h4 f6 30.Qg3 Kh8 31.Rg2 Rc7 32.g5 Re8 33.Kh2 hxg5  
34.hxg5 Nxf5 35.Nxf5 fxg5 36.Qxg5 Qxg5 37.Rxg5 Rd8 38.Re2 Rd6 39.Rh5+ Kg8 40.Kg3 Be8  
41.Rg5 Kf7 42.Rh5 Rcd7 43.Rh8 Rd8 44.Kf2 Bc6 45.Rxd8 Rxd8 46.Kg3 g6 47.Kg4 Bd7 48.Rh2  
gxf5+ 49.exf5 Rg8+ 50.Kf3 Bc6+ 51.Be4 Bd7 52.Bd5+ 1-0

### **Krzyanowski,Patryk (2017) - Gregg,Alan (2295) [D36] Queen's Gambit Declined**

Bournemouth 2012 (3), 21.04.2012

1.d4 d5 2.c4 c6 3.Nf3 Nf6 4.Nc3 e6 5.Bg5 Be7 6.Qc2 Nbd7 7.cxd5 exd5 8.e3 Nf8 9.Bd3 Ne6  
10.Bh4 h6 11.Ne5 Nd7 12.Bxe7 Qxe7 13.f4 Nxe5 14.fxe5 Qh4+ 15.g3 Qg5 16.Qf2 0-0 17.h4  
Qe7 18.0-0-0 h5 19.Bb1 Nd8 20.Qc2 g6 21.Rdf1 f5 22.Qg2 Ne6 23.g4 hxg4 24.h5 Qg5 25.Qd2  
gxh5 26.Ne2 h4 27.Nf4 Rf7 28.Nh3 Qh6 29.Rhg1 Ng7 30.Nf4 Nh5 31.Qh2 Nxf4 32.Rxf4 Be6  
33.Rh1 Raf8 34.Bd3 Rg7 35.Bf1 h3 36.Qg3 Qg5 37.Rg1 Qe7 38.a3 c5 39.Kb1 c4 40.Rh1 c3  
41.Rf2 cxb2 42.Kxb2 b5 43.Bd3 b4 44.a4 b3 45.Rc1 Qb4 46.Rc3 Qxa4 47.Rxb3 Qd7 48.Rc2  
Rc8 49.Rxc8+ Qxc8 50.Rc3 Qb8+ 51.Rb3 Rb7 52.Bc2 Rxb3+ 53.Bxb3 Qd8 54.Kc3 Qg5 55.Kb4  
Qh6 56.Qg1 h2 57.Qh1 Qxe3 58.Qxh2 Qxd4+ 59.Ka3 Qe3 60.Qh5 Qxe5 61.Qg6+ Kf8 62.Qg5  
g3 63.Qd8+ Kf7 64.Qg5 Qg7 65.Qh5+ Qg6 66.Qf3 g2 67.Bxd5 g1Q 68.Bxe6+ Qxe6 69.Qb7+  
Kg6 0-1

### **Gregg,Alan (2295) - FM Therrien, Alex (2239) [B11] Caro-Kann: Two Knights**

Bournemouth 2012 (4), 22.04.2012

1.e4 c6 2.Nc3 d5 3.d3 g6 4.g3 dxe4 5.Nxe4 Bg7 6.Bg2 Nf6 7.Nxf6+ exf6 8.Ne2 Nd7 9.0-0 0-0  
10.d4 f5 11.c3 Nf6 12.Bg5 h6 13.Bxf6 Qxf6 14.Nf4 h5 15.h4 Qd6 16.Nd3 Be6 17.f4 Rfd8  
18.Nc5 Bc8 19.Qf3 Rb8 20.Rfe1 b6 21.Nb3 Bd7 22.Rad1 Re8 23.Nd2 Rxe1+ 24.Rxe1 Re8  
25.Rxe8+ Bxe8 26.Qe2 ½-½

### **GM Williams, Simon (2506) - Gregg,Alan (2295) [C33] King's Gambit Accepted**

Bournemouth 2012 (5), 22.04.2012

1.e4 e5 2.f4 exf4 3.Bc4 Nf6 4.Nc3 d5 5.Bxd5 Bb4 6.Nf3 c6 7.Bb3 Bxc3 8.dxc3 Qxd1+ 9.Kxd1 0-  
0 10.Bxf4 Nxe4 11.Re1 Nc5 12.Bd6 Rd8 13.Kc1 Nxb3+ 14.axb3 Be6 15.Bc7 Rc8 16.Bf4 Nd7  
17.Nd4 Nf8 18.c4 a6 19.Kd2 Rd8 20.Ke3 Ng6 21.Bg3 Re8 22.Nxe6 Rxe6+ 23.Kd3 Rd8+ 24.Kc3  
Rxe1 25.Rxe1 f6 26.Re2 Kf7 27.Kb4 Rd7 28.Kc5 Ne7 29.Bb8 Nf5 30.c3 Ne7 31.Kb6 Nc8+  
32.Ka5 Rd1 33.c5 Ra1+ 34.Kb4 Rd1 35.c4 Rd3 36.Bc7 Rd7 37.Bg3 Rd3 38.Be1 Ne7 39.Bc3  
Nc8 40.Ka4 Rd1 41.b4 Rd3 42.b5 axb5+ 43.cxb5 Ne7 44.bxc6 bxc6 45.Ka5 Nd5 46.Ka6 Nxc3  
47.bxc3 Rxc3 48.Kb6 g5 49.Kxc6 h5 50.Kb6 Rb3+ 51.Kc7 1-0

## **Rutkofske goes under the knife – Again!**

**Lon Rutkofske** will be out of commission for a while due to surgery that will replace his left knee. He is fast becoming the bionic man, as he has already had his right knee replaced as well as his right shoulder rotator cuff repaired. The club will be in good hands though as **Bill Wingrove, Stew Wilkinson, Noel Bedy** and **Dave Boucher** will be on hand to keep the club active, inviting and entertaining.



## PHCC Rating List

The following list represents only current members of the Port Huron Chess Club. Current USCF ratings were used for members that had them, in order to establish the initial club rating list. The USCF rating format is used as the basis for calculating our club rating list. Members that had no USCF ratings are given a provisional rating based on their performances against regular club members who had USCF ratings. Club rated events will use these ratings for pairing purposes.

### **PHCC Rating List as of 4/24/12**

<u>Name</u>	<u>Rating</u>
Gregg, Alan	1961
Rutkofske, Lon	1861
Wilkinson, Stew	1840
Morabito, Matt	1798
Wingrove, Bill	1688
Fiedler, Bob	1687
Bedy, Noel	1650
Roome, Eric	1641
Jones, G. Avery	1507
Boucher, Dave	1439
Dickinson, Ty	1000
Nowiski, Adam	521
Kennedy, Jimmy	500
Kennedy, Danny	500
Ferguson, Gabe	479

### **USCF Ratings as of 4/24/12**

<u>Name</u>	<u>Rating</u>
Gregg, Alan	2052
Wilkinson, Stew	1840
Rutkofske, Lon	1818
Morabito, Matt	1790
Fiedler, Robert	1769
Wingrove, Bill	1694
Roome, Eric	1546
Bedy, Noel	1493
Jones, G.Avery	1484
Boucher, Dave	1274

### **PHCC Speed Rating List as of 4/24/12**

<u>Name</u>	<u>Rating</u>
Gregg, Alan	1971
Rutkofske, Lon	1911
Wilkinson, Stew	1865
Roome, Eric	1721
Morabito, Matt	1668
Fiedler, Robert	1640
Wingrove, Bill	1588
Bedy, Noel	1529
Jones, G. Avery	1485
Ty Dickinson	750
Ferguson, Gabe	750
Nowiski, Adam	750
Jimmy Kennedy	750
Danny Kennedy	750

## Calendar of Events:

**First Thursday of Each Month** - Chess Clinics– 6:30 to 8:00 PM - \$7.50 per person

**April 19<sup>th</sup> – April Mini-Swiss: G/30 – EF: \$5.00 Adults, \$2.50 for juniors...prizes based on entries**

**May 10-31<sup>th</sup> – USCF rated G/90 Rd Robin/or Mini-Swiss–EF: \$10...prizes and sections based on entries – one round per evening.**

## Dues News:

While dues are not required for anyone interested in playing at the club, they are required for those competing in tournament play. Annual Dues are \$20.00 for adults and \$10.00 for those under 19. Dues funds are used to offset miscellaneous expenses not funded by the Recreation Department.

Membership lapses: Broyles, Tom; Chan, Jaime; Hartson, Matt; Wiley, Cullen