



Chess Chatter

Newsletter of the Port Huron Chess Club

Editor: Lon Rutkofske July 2012 Vol.31. Number 7

The **Port Huron Chess Club** meets Thursdays, except holidays, from 6:30-10:00 PM, at Palmer Park Recreation Center, 2829 Armour Street, (NE corner of Garfield Street and Gratiot Ave...1 mile North of the Blue Water Bridge) Port Huron, Michigan. Everyone is welcome. All equipment provided. Website: <http://porthuronchessclub.volasite.com>

Gregg, Wilkinson, Rutkofske tie in June USCF Rated Mini-Swiss

The final round was a doozie as **Bob Fiedler** and **Noel Bedy** picked up a half-point each derailing both tournament leaders to bring about a three way tie for the June Mini-Swiss top spot. Bob and Noel played exceptionally well in their individual games, as it appears their higher rated counterparts preferred passivity to fireworks. This dynamic duo, although each a pawn down in the end stages of their respective contests, successfully orchestrated draws in positions that could have had fatal consequences had they overextended.

A somewhat shocked Lon played his customary role as the Fiedler/Bedy tandem did all the heavy lifting for him, slipping into the three way tie, by virtue of his last round bye. Check out the games section for these two final round gems!

Crosstable - June 2012 USCF Rated Mini-Swiss

#	Name	ID	Rtng	Post	Rd 1	Rd 2	Rd 3	Tot
1	Alan Gregg	12824548	2052	2045	W3	D2	D4	2.0
2	Stewart Wilkinson	12454555	1840	1846	W4	D1	D5	2.0
3	Lonnie Rutkofske	10288347	1818	1816	L1	W5	B---	2.0
4	Robert Fiedler	12528531	1769	1767	L2	B---	D1	1.5
5	Noel Bedy	12626193	1493	1502	B---	L3	D2	1.5

PHCC Invited to Participate in Sarnia's Hobby Fest on July 22

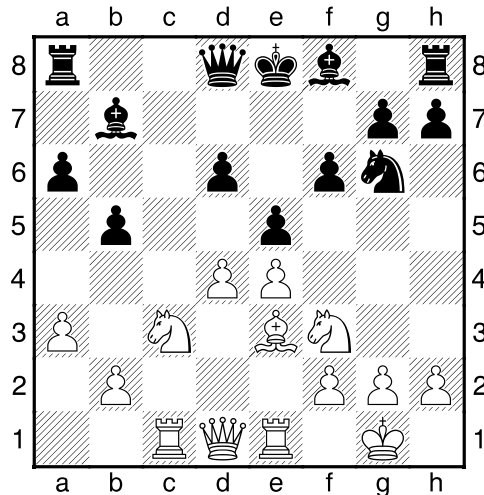
Former Club Champion, turned Sarnia politician, **Andy Bruziewicz** contacted Lon on Monday, July 2, 2012 inviting the PHCC to participate in Sarnia's Annual Hobby Festival event hosted by the Parks and Recreation Department in Centennial Park from 9 AM to 4 PM. I think this could be a great opportunity for the club to extend our recruiting internationally and get our name out to the Sarnia area. I envision a small simultaneous event, perhaps a demonstration of blitz chess, and cordial conversation

where the PHCC would be free to pass out our flyers to those that might be interested. If you would be interested in participating, let me (Lon) know as soon as possible.

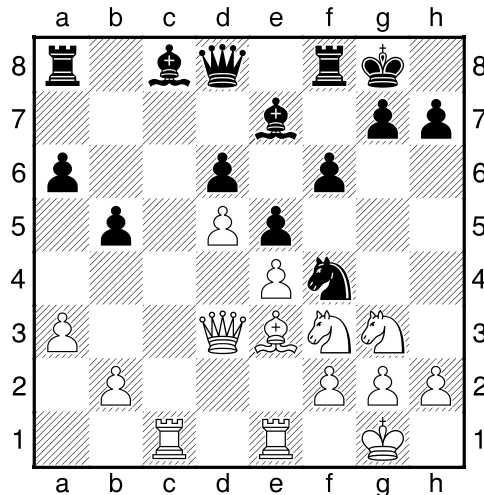
Members' Games

Please send me what you consider your best games, annotated or not, so that I might be able to showcase them. The following games represent contests that have been available at the time of this printing. Email them to me or give them to me personally, if you wish. Majority of analyses is done by Fritz 12, unless otherwise indicated.

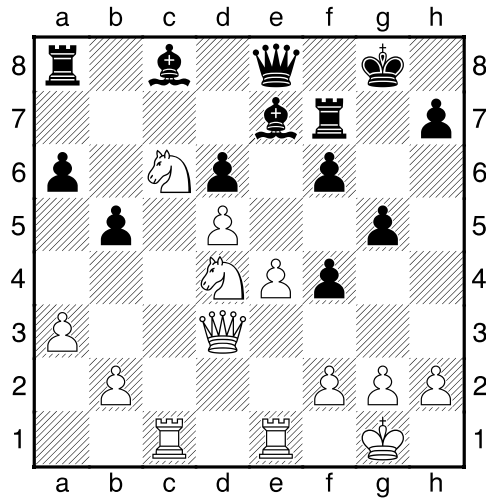
Wilkinson,Stew (1840) - Fiedler,Bob (1769) [B51]Sicilian Defense-Moscow Var
 June 2012 USCF Rated Mini-Swiss Port Huron Chess Club (1), 14.06.2012 [L. Rutkofske]
1.e4 c5 2.Nf3 Nc6 3.Bb5 d6 4.0-0 Bd7 5.c3 a6 6.Bxc6 Bxc6 7.Re1 e5 What we have here is really a Ruy Lopez formation with c5 rather than e5! **8.d4 cxd4 9.cxd4 f6 10.Nc3 b5 11.a3 Ne7 12.Be3 Ng6 13.Rc1 Bb7** Diagram



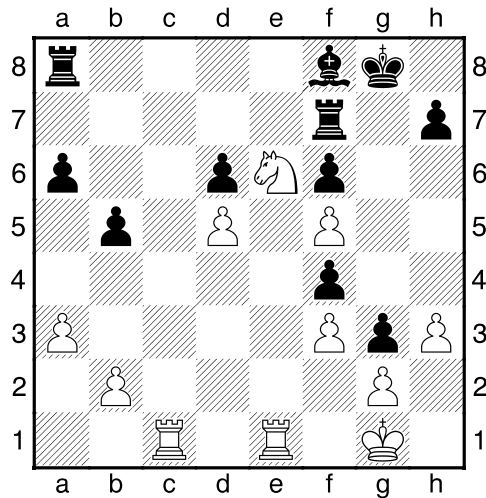
Much better would have been 13...Bd7 saving two tempi and providing Black with potential initiative on the K-side. [Fritz 12: 13...Be7 14.Qb3 Qd7 15.Nd5 Bd8 16.dxe5 dxe5 17.Red1 Bxd5 18.Rxd5 Qf7 19.Qd3 0-0 20.Rd7 Be7 21.Rcc7 Rfd8 Fritz also liked 13...Qd7 2.03/15] **14.d5 Be7 15.Ne2 0-0 16.Ng3 Bc8 17.Qd3 Nf4?** Diagram



This seems to seriously weaken Black's center for White's more active pieces and leaves the lead doubled f-pawn vulnerable. **18.Bxf4 exf4 19.Ne2 g5 20.Nfd4 Rf7 21.Nc6 Qe8 22.Ned4** Diagram



White's knight's "trip the life fantastic"...so many holes to plug, and Black's Bishops are hopelessly bottled up! Black desperately hopes White might exchange off his powerful knights. **22...Bf8 23.Nf5 Bxf5 24.exf5 Qd7 25.Nd4 Bh6 26.Ne6 g4 27.f3 Qa7+ 28.Qd4 Qxd4+ 29.Nxd4 g3 30.h3** A nice move that render's Blacks B totally useless. **30...Bf8 31.Ne6** Diagram



31...Be7 32.Rc6 h5 33.Rec1 Ra7 34.Nxf4 Bf8 35.Ne6 Rfd7 36.Rc8 Rf7 37.R1c6 Rad7 38.Rxa6 Kh7 39.Kf1 Bh6 40.Raa8 1-0

Rutkofske, Lonnie (1818) - Gregg, Alan (2052) [C88] Ruy Lopez: Anti-Marshall

June 2012 USCF Rated Mini-Swiss (1) Port Huron Chess Club, 14.06.2012

1.e4 e5 2.Nf3 Nc6 3.Bb5 a6 4.Ba4 Nf6 5.0-0 Be7 6.Re1 b5 7.Bb3 0-0 8.d4 exd4 9.Nxd4 Nxd4 10.Qxd4 c5 11.Qd3 c4 12.Bxc4 bxc4 13.Qxc4 d6 14.Nc3 Be6 15.Qd3 Qc7 16.Nd5 Qb7 17.Nxe7+ Qxe7 18.b3 Rfd8 19.Bb2 Ne8 20.Re3 f6 21.Rae1 Qc7 22.c4 a5 23.Rg3 a4 24.Qd1 axb3 25.axb3 Rab8 26.Bd4 Qf7 27.h4 Rb7 28.f4 f5 29.Qa1 g6 30.h5 fxe4 31.hxg6 hxg6 32.Qa5 Rdb8 33.Qg5 Bf5 34.Ree3 Ng7 35.Rc3 Ne6 36.Qf6

Qxf6 37.Bxf6 Kf7 38.Bg5 Nd4 39.Rge3 Rxb3 40.Rxb3 Rxb3 41.Rxb3 Nxb3 42.Kf2 Nc5 43.Ke3 Ke6 44.Bd8 d5 45.Bb6 Nd7 46.cxd5+ Kxd5 47.Ba5 Nf6 48.Kd2 Ng4 49.Bb6 Bc8 50.Ba7 Ba6 51.g3 Ke6 52.Bd4 Kf5 53.Bc3 e3+ 0-1

Gregg,Alan (2052) - Wilkinson,Stewart (1840) [D02] Queen Pawn Game

June 2012 USCF Rated Mini-Swiss Port Huron Chess Club (2), 21.06.2012

1.Nf3 d5 2.d4 e6 3.Bf4 Bd6 4.Bg5 Be7 5.h4 h6 6.Bd2 Nf6 7.e3 c5 8.c3 Nc6 9.Bd3 Bd7 10.Ne5 Bd6 11.f4 cxd4 12.exd4 Ne7 13.a4 Nf5 14.Nxd7 Nxd7 15.Bxf5 exf5 16.Qe2+ Qe7 17.Qxe7+ Bxe7 18.Na3 a6 19.Nc2 Nf6 20.Ne3 g6 21.Ke2 Rd8 22.Kf3 Ne4 23.Be1 h5 24.g3 0-0 25.Nd1 Bf6 26.Nf2 Rfe8 27.Nd3 Rd7 28.Rd1 Kg7 Draw Agreed

Bedy,Noel (1493) - Rutkofske,Lonnie (1818) [C10] French Defense

June 2012 USCF Rated Mini-Swiss Port Huron Chess Club (2), 21.06.2012

1.e4 e6 2.d4 d5 3.Nc3 h6 4.Bd3 Nc6 5.Nf3 Nb4 6.exd5 Nxd5 7.0-0 Ngf6 8.Re1 c6 9.Ne2 Nb4 10.c3 Nxd3 11.Qxd3 Bd6 12.Ng3 Bxg3 13.hxg3 Nd7 14.Qe2 0-0 15.Bf4 Qf6 16.Nd2 g5 17.Ne4 Qg6 18.Bd6 Re8 19.Nd2 f6 20.Qe4 Kf7 21.Qxg6+ Kxg6 22.g4 Nb6 23.c4 Bd7 24.b3 Nc8 25.Ba3 Ne7 26.Re2 h5 27.gxh5+ Kxh5 28.Rae1 Nf5 29.Bb2 Rad8 30.Ne4 Kg6 31.Nc5 Bc8 32.Nxe6 Bxe6 33.Rxe6 Rxe6 34.Rxe6 Nxd4 35.Re1 Nf5 36.Kf1 Rd2 37.Re2 Rd1+ 38.Re1 Rxe1+ 39.Kxe1 Nd6 40.Ke2 Kf5 41.Ke3 g4 42.g3 b6 43.f4?? Ne4 44.a4 Nxc3 45.a5 Ne4 46.axb6 axb6 47.b4 Nd6 48.c5 bxc5 49.bxc5 Nc4+ 0-1

Fiedler,Robert (1769) - Gregg,Alan (2052) [A03] Bird's Opening

2012 June USCF Rated Mini-Swiss Port Huron Chess Club (3), 28.06.2012

1.f4 d5 2.Nf3 Nf6 3.e3 e6 4.Nc3 Be7 5.Be2 b6 6.Bb5+ c6 7.Ba4 0-0 8.d4 Ba6 9.Ne5 Qc7 10.Ne2 c5 11.a3 c4 12.c3 b5 13.Bc2 Ne4 14.Ng3 f5 15.Nxe4 dxe4 16.g4 Nd7 17.Nxd7 Qxd7 18.g5 Bb7 19.h4 a5 20.Bd2 Rad8 21.h5 Bd5 22.b4 cxb3 23.Bxb3 Qc6 24.a4 Rb8 25.axb5 Qxb5 26.Bxd5 exd5 27.h6 g6 28.Kf2 Rb7 29.Kg3 Rfb8 30.c4 Qxc4 31.Rc1 Qa6 32.Rh2 Bb4 33.Bxb4 axb4 34.Qb3 Rd7 35.Ra2 Qd3 36.Qxd3 exd3 37.Rd1 b3 38.Rb2 d2 39.Rdxd2 Rc7 40.Rd3 Rcb7 41.Rc3 Kf7 42.Rc5 Ke6 43.Rc6+ Ke7 44.Kf2 Ra8 45.Rc1 Ra2 46.Rcb1 Rba7 47.Ke1 Rxb2 48.Rxb2 Rb7 49.Kd2 Kd6 50.Kc3 Re7 51.Re2 Rb7 52.Rb2 Re7 53.Rxb3 Rxe3+ 54.Kc2 Re7 55.Rb6+ Kc7 56.Rb5 Kc6 57.Rc5+ Kd6 58.Rc8 Re4 59.Rh8 Rxf4 60.Rxh7 Rg4 61.Rg7 Rxc5 62.h7 Rh5 63.Rxc6+ Ke7 64.Rg5 Rxh7 65.Rxf5 Ke6 66.Re5+ Kd6 67.Kd3 Ra7 68.Re8 Ra3+ 69.Ke2 Kc6 70.Rb8 Rh3 71.Rb4 ½-½

Wilkinson,Stewart (1840) - Bedy,Noel (1493) [B01] Scandinavian Defense

June 2012 USCF Rated Mini-Swiss Port Huron Chess Club (3), 28.06.2012

1.e4 d5 2.exd5 Nf6 3.Nf3 Qxd5 4.Nc3 Qd6 5.d4 a6 6.h3 e6 7.Be3 Nbd7 8.Be2 b5 9.a3 Bb7 10.0-0 Be7 11.Qd2 c5 12.dxc5 Qxd2 13.Nxd2 Rc8 14.b4 0-0 15.Bf3 Bxf3 16.Nxf3 h6 17.Rfd1 Rfd8 18.Rd3 e5 19.Rd2 e4 20.Nd4 Ne5 21.Nf5 Bf8 22.Rxd8 Rxd8 23.Rd1 Rxd1+ 24.Nxd1 Nc6 25.Nd4 Na7 26.Nc3 Be7 27.Nf5 Kf8 28.Ng3 Nc6 29.Ngxe4 Nxe4 30.Nxe4 a5 31.c3 Ke8 32.Bf4 Kd7 33.Kf1 f5 34.Nd6 Bxd6 35.Bxd6 axb4 36.axb4 Ke6 37.Ke2 Kd5 38.Kd3? 38.Bf8 seems much stronger! If 38...Kc4 39.Bg7 protects the pawn on c3. If 38...g6 39.Bh3, Kc4 40. Bd4 saves the c3 pawn.[LWR] 38...h5 39.f4 g6 40.h4 Na7 41.Bb8 Nc6 42.Bc7 Na7 43.Bb6 Nc6 44.g3 Nb8 45.c4+ bxc4+ 46.Kc3 Na6 47.Ba7 Nc7 48.Bb8 Nb5+ 49.Kd2 Nd4 50.Be5 Nb5 51.Kc2 Na3+ 52.Kb2 Nb5 53.Ka2 Na7 54.Ka3 Nc8 55.Ka4 Na7 56.Bc3 Kc6 57.Be5 Nb5 58.Bf6 Na7 59.Be5 Nb5 60.Bb8 Nd4 61.Be5 Nb5 Draw by three fold repetition. ½-½

Dave Boucher wins Great Lakes freighter cruise!

Being the busy host of an impromptu chess get-together at his St. Clair river residence, PHCC club regular Dave Boucher received a call from sweepstakes officials indicating that he and his wife had won a week long cruise aboard a Great Lakes freighter. Look for a story, and perhaps some pictures in the next issue of *Chess Chatter*.

PHCC Rating Lists

The following list represents only current members of the Port Huron Chess Club. Current USCF ratings were used for members that had them, in order to establish the initial club rating list. The USCF rating format is used as the basis for calculating our club rating list. Members that had no USCF ratings are given a provisional rating based on their performances against regular club members who had USCF ratings. Club rated events will use these ratings for pairing purposes.

PHCC Rating List as of 6/30/12

<u>Name</u>	<u>Rating</u>
Gregg, Alan	1959
Rutkofske, Lon	1858
Wilkinson, Stew	1845
Morabito, Matt	1798
Broyles, Tom	1736
Wingrove, Bill	1688
Fiedler, Bob	1688
Bedy, Noel	1651
Roome, Eric	1641
Jones, G. Avery	1507
Boucher, Dave	1439
Dickinson, Ty	1000
Nowiski, Adam	521
Kennedy, Jimmy	500
Kennedy, Danny	500
Ferguson, Gabe	479

USCF Ratings as of 6/30/12

<u>Name</u>	<u>Rating</u>
Gregg, Alan	2045
Wilkinson, Stew	1846
Rutkofske, Lon	1816
Morabito, Matt	1790
Fiedler, Robert	1767
Broyles, Tom	1737
Wingrove, Bill	1694
Roome, Eric	1546
Bedy, Noel	1502
Jones, G. Avery	1484
Boucher, Dave	1274

PHCC Speed Rating List as of 6/30/12

<u>Name</u>	<u>Rating</u>
Gregg, Alan	1971
Rutkofske, Lon	1911
Wilkinson, Stew	1865
Roome, Eric	1721
Broyles, Tom	1708
Morabito, Matt	1668
Fiedler, Robert	1640
Wingrove, Bill	1588
Bedy, Noel	1529
Jones, G. Avery	1485
Ty Dickinson	750
Ferguson, Gabe	750
Nowiski, Adam	750
Jimmy Kennedy	750
Danny Kennedy	750

PHCC shirts still available

Whether you have noticed or not (members of the PHCC have moved into the fashion mainstream with stylish collection of its very own. Aided by accomplished embroiderer

and design artist, Diane Rutkofske, members of the PHCC now have access to high quality, custom creations that sport the logo of the Port Huron Chess Club.

With the price tag of just \$30, you too can enjoy the celebrity that comes with the crisp, tailored look of well-dressed chess aficionados in colors that best reflect your chess-playing mood. Whether it be burgundy, black or traditional white (other colors available on request), these *objects de arte* available in sizes S thru 2XL, will make you the envy of every chess enthusiast, be they friend or foe.

Don't miss this opportunity to become a player of distinction and exquisite taste – order your shirt/s today by contacting Diane at drutkofske@sbcglobal.net. See you on the runway!



Calendar of Events:

First Thursday of Each Month - Chess Clinics– 6:30 to 8:00 PM - \$7.50 per person

July PHCC Rated 30/30 – G/30 Three rounds each Thursday, 7/12; 7/19; 7/26 – PHCC membership required. EF: \$5 ...Prizes based on entries. A minimum of 4 participants will be necessary to hold the event. Please contact Lon via phone or email if you plan to register. Play begins at 7:00 PM.

August USCF Rated Mini-Swiss – G/90 one round each Thursday, 8/9; 8/16; 8/23 – USCF membership required. EF: \$10 ...Prizes based on entries. A minimum of 4 participants will be necessary to hold the event. Please contact Lon via phone or email if you plan to register. Play begins at 7:00 PM.

Dues News:

While dues are not required for anyone interested in playing at the club, they are required for those competing in tournament play. Annual Dues are \$20.00 for adults and \$10.00 for those under 19. Dues funds are used to offset miscellaneous expenses not funded by the Recreation Department.

Membership lapses: Chan, Jaime; Hartson, Matt; Wiley, Cullen