



# Chess Chatter

Newsletter of the Port Huron Chess Club

---

**Editor: Lon Rutkofske      December 2014      Vol.33      Number 11**

---

The **Port Huron Chess Club** meets Thursdays, except holidays, from 6:30-10:00 PM, at Palmer Park Recreation Center, 2829 Armour Street, (NE corner of Garfield Street and Gratiot Ave...1 mile North of the Blue Water Bridge) Port Huron, Michigan. Everyone is welcome. All equipment provided. Website: <http://porthuronchessclub.volasite.com>

---

## West Wins October USCF Rated Quad



**Tony West** captured first place in the 2014 October USCF Rated Quad scoring 2.5/3. Only **Avery Jones** managed to nick the Grosse Pointe Woods native for half a point in the final stanza to spoil Tony's sweep. Avery was the biggest ratings winner as well, netting a bundle of rating points...to make up partially for those that he lost in his recent foray to the wild west in Nevada! Both Noel and Bill Wingrove were solid, but did not seem to play with inspiration nor the determination of Avery, but all gave Tony a tough row to hoe on

his way to the winner's circle. Tony had a taste of what it is like to be the target, like Alan Gregg usually is, with everyone gunning to upset him. It had to be especially disheartening to him because it temporarily derails his quest to become an expert by year's end. It is always tough on higher rated players to be tops in any section because they have the least to win and the most to lose with each game becoming a MUST win situation for them and the slightest slip is often devastating!

Bravo to Tony for his win and the PHCC really appreciates everything he brings to our club! Check out the games in the Games Section.

### 2014 PHCC October USCF Rated Quad

#	Name/Rtng/ID	Rd 1	Rd 2	Rd 3
1	<b>Tony West</b> 1938 12565951	B 3 1.0	W 2 2.0	B 4 2.5
2	<b>William Wingrove</b> 1641 12181760	W 4 0.5	B 1 0.5	B 3 1.0
3	<b>Noel Bedy</b> 1487 12626193	W 1 0.0	B 4 0.5	W 2 1.0
4	<b>G Avery Jones</b> 1444 12577178	B 2 0.5	W 3 1.0	W 1 1.5

## Rutkofske Finally Brings One Home

**Lon Rutkofske** cashed in on a rare loss by **Alan Gregg** to notch his first tournament victory in what seems to have been forever! Spurred on by **Matt Morabito's** 2<sup>nd</sup> round upset of Alan, Lon's draw with **Bill Wingrove** put him in a the cat bird's seat as it set up a third round showdown with the highly contagious Morabito who was suffering the ill effects of a heavy cold. Perhaps it was the impact of his illness, or the debilitating high that usually plagues one after a significant victory in a previous round, Matt was just not his usual crafty, tactical self, succumbing to a resurgent Lon who fell into a wonderfully active position despite dropping a middle game N for R exchange to the ever dangerous electronics teacher! Hats off to **Avery Jones** and **Gerrit Beneker** who braved the nasty weather to help round out the field to make the event a success.

### 2014 PHCC November Mini-Swiss -- Standings

#	Name	Rtng	Post	Rd 1	Rd 2	Rd 3	Tot	Prize
1	Lonnie Rutkofske	1830	1840	W6	D4	W3	2.5	20.00
2	Alan Gregg	1945	1939	W4	L3	W5	2.0	5.00
3	Matthew Morabito	1844	1852	W5	W2	L1	2.0	5.00
4	William Wingrove	1657	1667	L2	D1	W6	1.5	
5	G Avery Jones	1648	1645	L3	W6	L2	1.0	
6	Gerrit Beneker	1528	1502	L1	L5	L4	0.0	

## Port Huron Chess Club to have its own email address

From now on, PHCC emails will be coming to you through our new email address: [PtHuronChessClub@aol.com](mailto:PtHuronChessClub@aol.com) - Lon Rutkofske will continue to send information to club members via this new email address but will discontinue using his personal address for the club's distribution list. This should make things much easier for club members to recognize club related information. You can still contact Lon via his personal email, if you so choose, but this change should facilitate email correspondence for everyone!

## Dues News:

While dues are not required for anyone interested in playing at the club, they are required for those competing in tournament play. Annual Dues are \$20.00 for adults and \$10.00 for those under 19. Dues funds are used to offset miscellaneous expenses not funded by the Recreation Department. Memberships to expire in November 2014:  
**Nathan Hartwig**

## Members' Games



Please send me what you consider your best games, annotated or not, so that I might be able to showcase them. The following games represent contests that have been available at the time of this printing. Email them to me or give them to me personally, if you wish. Majority of analyses is done by Fritz 12, unless otherwise indicated.

### **Bedy, Noel (1487) - West, Tony (1983) [A80] English Opening**

2014 October USCF Rated Quad Port Huron (1),  
16.10.2014

**1.d4 f5 2.Nf3 Nf6 3.Bf4 d5 4.e3 c6 5.c3 e6 6.Bd3 Bd6  
7.Bg3 0-0 8.Nbd2 Ne4 9.Ne5 Qe7 10.Ndf3 Nd7 11.Nxd7  
Bxd7 12.Bxd6 Qxd6 13.Ne5 Rad8 14.Qe2 c5 15.Rc1  
Ng5 16.Qh5 Nf7 17.f4 Be8 18.Qh4 c4 19.Bb1 Nh8 20.g4 Ng6 21.Qg3 Ne7 22.Rg1  
g6 23.h4 fxg4 24.Qxg4 Nf5 25.Qh3 Kh8 26.Rc2 Qe7 27.Rh2 b5 28.Rhg2 Qxh4+  
29.Qxh4 Nxh4 30.Rg3 Nf5 31.Rh3 Kg7 32.Kd2 Rb8 33.Nf3 Rf6 34.Ng5 h6 35.Nf3  
b4 36.Ne5 Kh7 37.Rgh1 h5 38.Bxf5 exf5 39.Rg3 Ra6 40.Rhg1 bxc3+ 41.Kxc3  
Rxa2 42.b4 a5 43.Rb1 axb4+ 0-1**

### **Wingrove, William (1641) - Jones, G. Avery (1444) [B06] Modern Defense**

2014 October USCF Rated Quad Port Huron, 16.10.2014

**1.e4 c5 2.c3 g6 3.d4 Bg7 4.Be3 Qb6 5.Qd2 cxd4 6.Bxd4 Bxd4 7.cxd4 Nc6 8.Nf3  
d6 9.h3 Bd7 10.Nc3 e6 11.Be2 Rc8 12.0-0 f6 13.d5 Nd8 14.Rac1 Qa5 15.dxe6  
Nxe6 16.Qxd6 Qb6 17.Qxb6 axb6 18.Nd5 b5 19.Rxc8+ Bxc8 20.Bxb5+ Bd7  
21.Bxd7+ Kxd7 22.Rd1 Ke8 23.Nd4 Kf7 24.Nxe6 Kxe6 25.f3 Nh6 26.Kf2 Rc8  
27.Nc3 Nf7 28.Rd4 Ne5 29.Ke2 Nc4 30.b3 Ne5 31.Kd2 h6 32.Nd5 h5 33.f4 Nc6  
34.Rc4 f5 35.Ke3 h4 36.Nb4 Rc7 37.Nxc6 bxc6 38.e5 Kd5 39.a4 Rb7 40.Rc3 c5  
41.Rd3+ Ke6 42.Kd2 Rb4 43.Ke3 Rb6 44.Rc3 Kd5 45.Kd3 Rb4 46.Ke3 Re4+  
47.Kf3 Rb4 48.a5 Rb5 49.Rd3+ Ke6 50.Rd6+ Kf7 51.a6 Rxb3+ 52.Kf2 Rb2+  
53.Kg1 Rb1+ 54.Kh2 Ra1 55.Rf6+ Kg7 56.Rc6 Kf7 57.Rc7+ Ke6 58.a7 c4  
59.Rxc4 Rxa7 60.Rc6+ Kf7 61.Rc2 Ke6 62.Rd2 Ke7 63.g3 hxg3+ 64.Kxg3 Ra3+  
65.Kg2 Ra4 66.Rf2 Re4 67.Kg3 Re1 68.Rf3 Rg1+ 69.Kh2 Rd1 70.Rf2 Rd3 71.Kg2  
Ke6 72.Rf3 Rd2+ 73.Kg3 Rd1 74.Kh4 Rg1 75.Rg3 Rf1 76.Kg5 Kf7 77.h4 Rh1  
78.Rf3 Kg7 79.Rg3 Ra1 80.h5 Ra6 [Draw Agreed. White had less than two minutes  
left, and Black was going to lose positionally.]**

### **West, Tony (1938) - Wingrove, William (1641) [D80] Grunflod Defense**

2014 October USCF Rated Quad Port Huron (2), 23.10.2014

**1.d4 Nf6 2.c4 g6 3.Nc3 d5 4.Bg5 Ne4 5.Bf4 Nxc3 6.bxc3 Bg7 7.Nf3 0-0 8.e3 c5  
9.cxd5 Qxd5 10.Be2 Nc6 11.0-0 Bf5 12.Qa4 cxd4 13.cxd4 Qa5 14.Qb3 Qb4  
15.Rfc1 Qxb3 16.axb3 Rfc8 17.Ra4 a6 18.Rac4 Be6 19.R4c3 Na7 20.Kf1 Rxc3  
21.Rxc3 Rc8 22.Rxc8+ Nxc8 23.b4 Bd7 24.Ke1 Na7 25.Kd2 e6 26.Ne5 Ba4 27.Bf3  
b6 28.Nc4 Bf8 29.Nxb6 Bxb4+ 30.Kd3 Bb5+ 31.Kc2 a5 32.Kb3 Be1 33.Bg3 Nc6  
34.Na4 Nb4 35.Nc3 Bd3 36.Ne4 Bc2+ 37.Kb2 Ba4 38.Nc5 Bb5 39.Bd1 Nd3+  
40.Nxd3 Bxd3 41.Ba4 Bf1 42.Bc6 Bc4 43.e4 Kg7 44.d5 exd5 45.exd5 Bd2 46.d6  
Bg5 47.Kc3 Be6 48.d7 Bd8 49.Kd4 f6 50.Kc5 Kf7 51.Kd6 Bc4 52.Bf4 Bb3  
53.Bd5+ Bxd5 54.Kxd5 Ke7 55.Kc6 a4 56.Bd6+ Ke6 57.Ba3 [White wins on  
time!]1-0**

**Jones,G. Avery (1444) - Bedy,Noel (1487) [D01] Veresov Opening**

2014 October USCF Quad Port Huron (2), 23.10.2014

1.d4 Nf6 2.Nf3 e6 3.Bg5 d5 4.e3 Be7 5.Nc3 Nbd7 6.Bd3 0-0 7.0-0 c5 8.h3 a6  
9.Re1 c4 10.Bf1 b5 11.a3 Bb7 12.Nd2 Qc7 13.e4 dxe4 14.Ndxe4 Bxe4 15.Bxf6  
Bxc2 16.Qxc2 Nxf6 17.Rad1 Rad8 18.Be2 Qb6 19.Qd2 Rd6 20.Bf3 Rfd8 21.d5 Bf8  
22.Qg5 exd5 23.Nxd5 Nxd5 24.Bxd5 Qc7 25.Qf5 Rf6 26.Qh5 Bc5 27.Bf3 Bf8  
28.Be4 g6 29.Qg5 Bg7 30.Qc1 Rfd6 31.Bf3 Rxd1 32.Bxd1 Qd6 33.Bf3 Qd4 34.Rd1  
Qf6 35.Rxd8+ Qxd8 36.Qc2 Qe7 37.Qc1 Qe5 38.Bb7 a5 39.Ba6 Qc5 40.Bb7 Bd4  
41.Qc2 Qe7 42.Bf3 Qe1+ 43.Kh2 Qxf2 44.Qxf2 Bxf2 45.Bc6 b4 46.axb4 axb4  
47.Bd5 ½-½

**Bedy,Noel (1487) - Wingrove,William (1641) [D02] Queen Pawn Game**

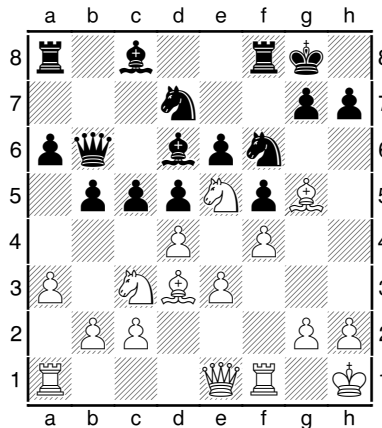
2014 October USCF Rated Quad Port Huron (3), 30.10.2014

1.d4 Nf6 2.Nf3 d5 3.Nbd2 g6 4.e3 Bg7 5.c4 0-0 6.b4 a5 7.b5 c6 8.cxd5 cxd5 9.Bb2 Bf5  
10.Be2 Nbd7 11.0-0 a4 12.a3 Nb6 13.Rc1 Rc8 14.Ne5 Qd6 15.Nd3 Rxc1 16.Bxc1 Nfd7  
17.Bb2 Rc8 18.Nb4 Nf6 19.Qa1 Ne4 20.Nxe4 Bxe4 21.Rc1 Rc7 22.Rxc7 Qxc7 23.Qc1  
Qxc1+ 24.Bxc1 Bf5 25.Bf3 e6 26.Bd1 Bf8 27.Na2 Nc4 28.Bxa4 Nxa3 29.Bxa3 Bxa3 30.Nc3  
Bb2 31.Ne2 b6 32.Kf1 Bd3 33.Ke1 Ba3 34.Kd2 Bc4 35.Nc3 Bb4 36.Kc2 Bxc3 37.Kxc3 Bf1  
38.g3 Bg2 39.Bd1 Bh3 40.Bc2 Bg2 41.Bd3 Kg7 42.f4 Kh6 43.Be2 Be4 44.h4 f6 45.Kd2 g5  
46.Ke1 Bg6 47.Kf2 gxh4 48.gxh4 f5 49.Kg3 ½-½

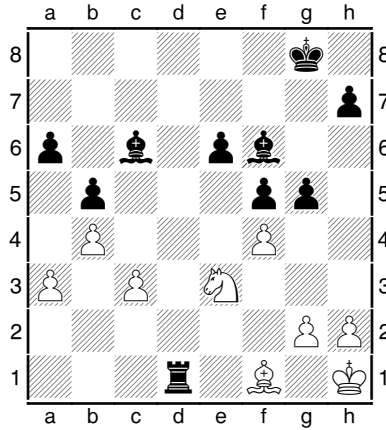
**Jones,G. Avery (1444) - West,Tony (1938) [A80] Dutch Defense**

2014 October USCF Rated Quad Port Huron (3), 30.10.2014 [Lon Rutkofske]

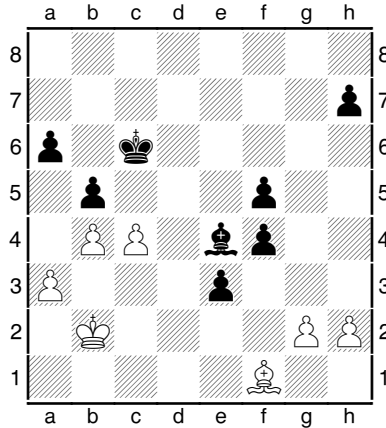
1.d4 f5 2.Nf3 Nf6 3.Nc3 e6 4.Bg5 d5 5.e3 c6 6.Bd3 Bd6 7.0-0 0-0 8.Ne5 Nbd7  
9.f4 Qb6 10.Na4 Qc7 11.Nc3 a6 12.a3 c5 13.Kh1 b5 14.Qe1 Qb6 Diagram



[14...c4! looks much stronger because it captures more space, restricts the white squared bishop and prepares for a Q-side assault after 15.Be2, b4 16 ab, Bb4 and the hole at e4 looms large for Black!] **15.Nxd7** [In this semi-closed position, Black needs to preserve his knight by 15...Nd7 there by negating the effect of the white's misplaced bishops, further cramping his game and preparing for a Q-side attack.] **15...Bxd7 16.Bxf6 Rxf6 17.dxc5 Bxc5 18.Rf3 Bc6 19.Rh3 d4?** [Premature...better was 19...Qb7 preparing for the d4 advance and permitting the Queen some defensive protecting along the 7th rank and forces either Qf1 or Bf1 white's center looks vulnerable to Rd8, Rg6, or d4! It is obvious Black is in complete control here, so why the rush? A slow crush is probably in order here, since white's counter play is so restricted!] **20.Nd1 Rg6 21.Rg3 Rxc3 22.Qxc3 dxe3 23.b4 Bd4 24.c3 Bf6 25.Qxe3 Qxe3 26.Nxe3 Rd8 27.Bf1 g5! 28.Rd1 Rxd1** Diagram



[Perhaps 28....the simple g:f4 was better, since after 29.Rd8+, Bd8 White has to move the N probably to c2, then the simple e4! makes his Bishop pair even stronger since the d4 and e3 squares now become unavailable to the N with Bb6 looming!] **29.Nxd1 gxf4 30.Kg1 Kf7 31.Kf2 Ke7 32.Ke2 Kd6 33.Kd2 e5 34.Nb2 e4 35.Nd1 Bd5 36.Kc2 Kc6 37.Nb2 e3 38.c4 Be4+ 39.Kc1 Bxb2+ 40.Kxb2** Diagram



[40...f3! 41.cb+, ab 42.gf3, Bf3 43. Kc2,e2! should win!] **40...bxc4?? 41.Kc3 Bd5 42.a4 h5 43.h4 Kd6 44.Kd4 Bc6 45.a5 Bb5 46.Kc3 Kd5 47.Be2 Kd6 48.Bxh5 Bc6 49.Bf3 Bb5 50.h5 Ke5 51.Be2 Kf6 52.Bf3 Kg5 53.Be2 Kh6 54.Bf3 Kg5 55.Be2 Kh6 ½-½**

## **Calendar of Events:** Note the change for the First Thursday of Each Month.

**First Thursday of Each Month** - Chess Clinics– 6:30 to 7:00 PM - \$7.50 per person. From 7:00 until 10:00, Players wishing to play games with longer time controls up to G/90 can choose to play match games if they so desire. Participants will be paired randomly and colors will be selected by lot. PHCC club ratings will be used. Players should turn their game scores into Lon, so he can adjust ratings appropriately and showcase the games in *Chess Chatter*.

## **NO MEETING on Thanksgiving – November 27<sup>th</sup>!**

**December 4th -PHCC Business Meeting - 7:00 PM** -This is an opportunity to for club members to comment on issues that they deem important for the growth of our

club membership, alternative activities, website recommendations, suggestions for tournaments, Suggest alternative formats for the 2015 PHCC Championships, other matters of interest to the club.

## NO TOURNAMENTS WILL BE HELD IN DECEMBER

### PHCC Rating Lists

The following list represents only current members of the Port Huron Chess Club. Current USCF ratings were used for members that had them, in order to establish the initial club rating list. The USCF rating format is used as the basis for calculating our club rating list. Members that had no USCF ratings are given a provisional rating based on their performances against regular club members who had USCF ratings. Club rated events will use these ratings for pairing purposes.

#### **PHCC Rating List as of 11/21/14**

<u>Name</u>	<u>Rating</u>
Gregg, Alan	1939
West, Tony	1914
Wilkinson, Stew	1907
Morabito, Matt	1852
Rutkofske, Lon	1840
Broyles, Tom	1692
Hartwig, Nathan	1689
Wingrove, Bill	1667
Jones, G. Avery	1645
Bedy, Noel	1610
Beneker, Gerrit	1502
Chan, Jaime	1502
Boucher, Dave	1467
Carey, Jay	1000
Nowiski, Adam	969
Allen, Nathan	957
Allen, Zachary	462

#### **USCF Ratings as of 11/4/14**

<u>Name</u>	<u>Rating</u>
Gregg, Alan	1986
West, Tony	1912
Wilkinson, Stew	1880
Hartwig, Nathan	1809
Morabito, Matt	1809
Rutkofske, Lon	1800
Broyles, Tom	1699
Wingrove, Bill	1613
Bedy, Noel	1494
Jones, G. Avery	1493
Chan, Jaime	1481
Boucher, Dave	1332
Nowiski, Adam	673P7

#### **PHCC Speed Rating List as of 11/4/14**

<u>Name</u>	<u>Rating</u>
Gregg, Alan	1948
Wilkinson, Stew	1938
Rutkofske, Lon	1839
West, Tony	1801
Hartwig, Nathan	1784
Morabito, Matt	1745
Broyles, Tom	1708
Jones, G. Avery	1590
Wingrove, Bill	1561
Bedy, Noel	1535
Chan, Jaime	1502
Beneker, Gerrit	1500
Nowiski, Adam	1364
Carey, Jay	1000
Allen, Nathan	984
Allen, Zachary	740