



Chess Chatter

Newsletter of the Port Huron Chess Club

Editor: Lon Rutkofske November 2010 Vol.29. Number 11

The **Port Huron Chess Club** meets Thursdays, except holidays, from 6:30-10:00 PM, at Palmer Park Recreation Center, 2829 Armour Street, (NE corner of Garfield Street and Gratiot Ave...1 mile North of the Blue Water Bridge) Port Huron, Michigan. Everyone is welcome. All equipment provided. Website: <http://porthuronchessclub.volasite.com/>

Efim and Me – by Bill Wingrove

I began studying chess in 1975. My wife Jane and I had moved from Western New York to Royal Oak where she had a job. I would be unemployed for a year and studying chess helped pass the time. Those were pre-internet and pre-computer times, and getting chess material was difficult. The famous Spassky-Fischer match had been three years earlier, and a lot of the available stuff was from Fischer's games. I pretty much copied Fischer's opening repertoire. This is not because I was a fan; Fischer was a pretty reprehensible character away from the chessboard. Fischer's games were the most available. To this day I play the Sicilian Najdorf, the Grunfeld and the Ruy Lopez. Fischer played the King's Indian a lot, but I did not think I needed two queen pawn defenses. My opening repertoire has always been quite narrow. Recently, I have started looking at other openings, and it is helpful to see similar patterns arising out of different openings.

A name that came up in Fischer's games was Efim Geller. Most associate Boris Spassky with Fischer. Fischer himself put a lot of emotion into his games with Mikhail Tal, a former world champion with a flamboyant chess style. Tal had a plus score against Fischer. About the only other grandmaster who also did was Geller. Geller was 5 wins, two draws and three losses with Fischer. Their games were ferocious. One night recently while slurping up suds with other chess comrades, Alan Gregg said he had a copy of ***Application of Chess Theory*** which is Geller's self-annotated games. I jumped at the chance to borrow it.

Geller was born in 1925 and died in 1998. He won the World Senior Open as recently as 1992. Geller is generally recognized as one of the best ten players in the world from 1950-1975. He played in many Soviet Championships, Olympiads and world championship cycles. He was a second to Boris Spassky in his match with Fischer and also seconded World Champion Anatoly Karpov. He was a key figure in reviving the King's Indian Defence. He developed the **6. Be2** line against the Najdorf, which is what I play against it. There is the Geller Gambit; **1. e4 d5 2 c4 c6 3. Nf3 Nf6 4. Nc3 dxc4 5. e4.**

Most say that Geller was very sharp tactically early in his career and became more positional, and I agree. I enjoyed playing over many of his games without analyzing much but just to feel the flow. In the old question of whether chess is competition or art, Geller seems to me an artist. Here is one of his games with Fischer from ***How to Beat Bobby Fischer***, by Edmar Mednis. Some of the comments are Mednis' and a few are mine. The game was played at Monte Carlo in 1967. Fischer had already clinched first place and Geller was back in the pack, so there is a certain "nothing to lose" quality about it.

Fischer was White and Geller Black: **1. e4 c5 2. Nf3 d6 3. d4 cd 4. Nd4 Nf6 5. Nc3 a6** Geller almost never plays the Najdorf as black. He is a Najdorf nemesis. He must have prepared something special for Fischer. At this point Fischer always played **6. Bc4**. The line should probably be called the Fischer variation - **6. Bg5**. One good surprise deserves another. **6... e6 7. f4, Qb6**. This is the “poisoned pawn variation.” It could be called the Fischer pawn variation. Fischer in his career played this as Black, not to try for equality, but to try to win as Black. Geller is himself playing the opponent’s signature variation against one of the greatest players of all time! **8. Qd2, Qb2 9. Rb1, Qa3 10. f5** Fischer, true to himself, wants to open up the position and get at Black’s king. **10... Nc6 11. fxe6, fxe6 12. Nc6, bxc6 13. e5, Nd5?! Modern Chess Openings 15th Edition** has **13...de** and in a later game Fischer played **13...de.14. Nd5, cd5 15. Be2, de 16.0-0,Bc5 17.Kh1, Rf8 18 c4** Fischer is still wanting to open lines. **18...Rxf1 19. Rxf1, Bb7 20. Bg4?** Mednis gives this as the losing move. He gives **20. Qc2** with the idea that if the Black queen moves to say d3, **21. Qa4** delivers mate. Fischer, in a note preserved in **MCO**, agrees. **20...dc**. Geller, with all sorts of material aimed at his king, just keeps taking stuff. **21. Be6, Qd3**. This move puts out White’s initiative, which is why Qc2 had to be played. **22. Qe1, Be4 23. Bg4, Rb8 24. Bd1, Kd7 25. Rf7, Ke6 White resigns!** If **26 Rg7 ...Bg2** followed by **...Rb2** will take care of things. Mednis said that Fischer spent 20 minutes on **20 Bg4**, but the position was just too wild and crazy. Sane Najdorf players like me do not play the poisoned pawn variation.

Thank you for going down memory lane with me. I have ordered on-line my copy of **Application of Chess Theory**.

Palmer Park Recognizes PHCC Hall of Fame Plaque

The Port Huron Recreation has purchased a **Hall of Fame** plaque to replace the loving cup trophy that has served as the permanent record for the lengthy list of Club Champions and Club Speed Champions over the years. Because the loving cup had no



more space for names and there was no real spot at the Recreation Department to display the trophy, it was tucked away in our club cabinet for the past decade, hardly seeing the light of day. **Nancy Winzer** was kind enough to agree to pay for having the names transferred to the new plaque and has had it mounted in our meeting room. The PHCC is the longest continuously running club under the city recreation department’s umbrella as her predecessor, **Betty Dunn**, had mentioned several times, and she agreed that it might be fitting for the club to be recognized for its outstanding record for uninterrupted service to the community. Thank you again Port Huron Recreation Department for your support.

Fiedler Poses with Panache

Bob Fiedler stopped in briefly to show the fruits of his labors of this past summer. Bob was featured in the October issue of **Chess Chatter** complete with pictures and a

Times Herald article of his glorious “Ride in the Rockies”, but didn’t have pictures of the medal he won for placing in his division. I asked if he could bring it in for our own PHCC photo op! This hefty piece of hardware might be useful as a training aid in preparation for the next challenge on his docket!



PHCC Rating List

The following list represents only current members of the Port Huron Chess Club. Current USCF ratings were used for members that had them, in order to establish the initial club rating list. The USCF rating format is used as the basis for calculating our club rating list. Members that had no USCF ratings are given a provisional rating based on their performances against regular club members who had USCF ratings. Club rated events will use these ratings for pairing purposes.

PHCC Rating List as of 10/15/10

Name	Rating
Gregg, Alan	1939
Rutkofske, Lon	1905
Morabito, Matt	1760
Petty, Michael	1740
Broyles, Tom	1736
Fiedler, Robert	1725
Wingrove, Bill	1707
Bedy, Noel	1628
Duncan, Bob	1595
Dean, Joel	1560
Berthen, Dale	1537
Scholfield, Chris	1503
Willard, Mark	1500
Willard, Phil	1486
Jones, G. Avery	1469
Mark Fitchett	1460
Chan, Jaime	1452
Boucher, Dave	1322
Jachcinski, Michael	1016
Tuttle, Aaron	498

USCF Ratings as of 10/15/10

Name	Rating
Gregg, Alan	2000
Rutkofske, Lon	1876
Fiedler, Robert	1769
Broyles, Tom	1737
Morabito, Matt	1725
Petty, Michael	1703
Wingrove, Bill	1694
Jones, G. Avery	1671
Dean, Joel	1615
Willard, Phil	1551
Bedy, Noel	1517
Duncan, Bob	1497
Chan, Jaime	1447
Trombley, Cody	1278
Boucher, Dave	1277
Mireau, Nathan	1050
Jachcinski, Michael	987

PHCC Speed Rating List as of 10/15/10

Name	Rating
Rutkofske, Lon	1949
Petty, Michael	1763
Broyles, Tom	1708
Duncan, Bob	1693
Morabito, Matt	1668
Fiedler, Robert	1640
Wingrove, Bill	1625
Dean, Joel	1592
Jones, G. Avery	1485
Mark Fitchett	1444
Bedy, Noel	1440
Willard, Phil	1379

Members' Games

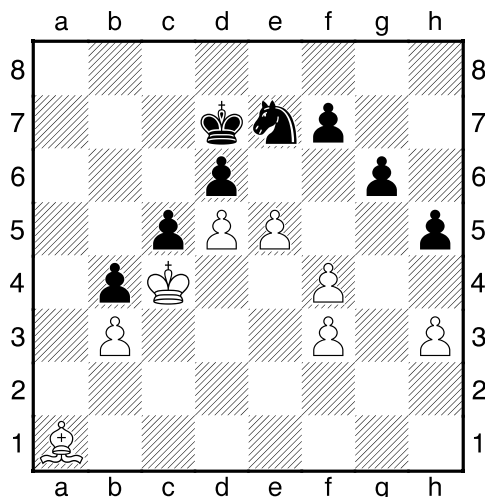
Please send me what you consider your best games, annotated or not, so that I might be able to showcase them. The following games represent contests that have been available at the time of this printing. Email them to me or give them to me personally, if you wish. Majority of analysis done by Fritz 12, unless otherwise indicated.

Longtime club member, **Phil Willard**, has suffered a debilitating injury from a fall he took a few weeks ago. I thought it would be appropriate to showcase a few of his games from the 1990's when he was at the top of his game. We wish him a speedy recovery because we miss his warm smile and welcoming, congenial nature.

Willard, Phil (1528) - Goodell, Fred (1737) [B21] Sicilian/Morra Variation

February-March Mini-Swiss - Port Huron Chess Club (2), 25.02.2010

1.e4 c5 2.f4 d6 3.h3 g6 4.Nf3 Bg7 5.Bc4 Be6 6.Na3 Bxc4 7.Nxc4 b5 8.Ne3 e6 9.c4 b4 10.d4 Nc6 11.d5 Nd4 12.Ng5 h6 13.Qa4+ Ke7 14.Nf3 Nxf3+ 15.gxf3 Qd7 16.Qxd7+ Kxd7 17.Rg1 Bd4 18.Rb1 Ne7 19.Ke2 Rhg8 20.Rd1 exd5 21.cxd5 Bxe3 22.Bxe3 a5 23.b3 a4 24.Kd3 Rgb8 25.Kc4 axb3 26.axb3 Ra2 27.Rd2 Rxd2 28.Bxd2 Ra8 29.Bc1 Ra2 30.Bb2 Ra8 31.Ra1 Rxa1 32.Bxa1 h5 33.e5 Diagram

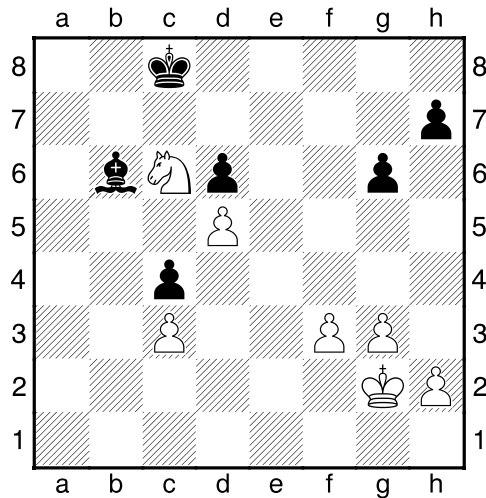


33...Nf5 34.exd6 Ne3+ 35.Kxc5 f5 36.Be5 Nc2 37.Kb5 Ne1 38.Kxb4 Nxf3 39.Kc4 g5 40.Kd3 g4 41.hxg4 hxg4 42.Ke2 Nh4 43.Kf2 Ng6 44.b4 Kc8 45.Kg3 Nf8 46.Bd4 Nd7 47.Kh4 Kb7 48.Kg5 1-0

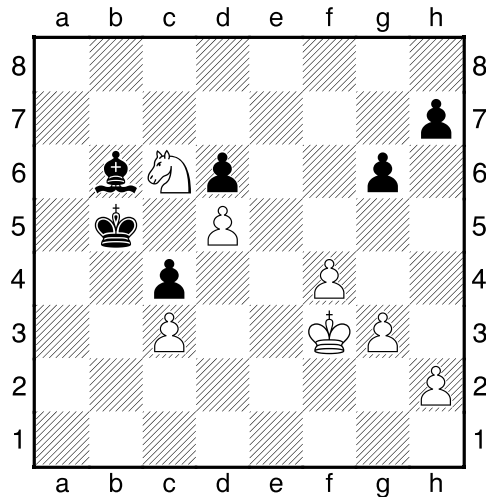
Willard, Jeff (1768) - Willard, Phil (1528) [C41]

1990 PHCC Champs Port Huron Chess Club (3), 01.02.1990

1.e4 e5 2.Nf3 d6 3.Nc3 c6 4.d4 Bg4 5.Be2 Bxf3 6.Bxf3 exd4 7.Qxd4 Nd7 8.Be2 Qc7 9.Bf4 Nb6 10.0-0 0-0-0 11.a4 a5 12.b4 Na8 13.Qa7 Kd7 14.Qxa5 Qxa5 15.bxa5 Nc7 16.Bg4+ Ne6 17.Bg3 g6 18.Rfd1 Nh6 19.Be2 Kc7 20.Rab1 Bg7 21.Na2 Nc5 22.Rb4 Rhe8 23.Bd3 Ra8 24.a6 Ng4 25.Bc4 Ne5 26.Bxe5 Rxe5 27.axb7 Nxb7 28.Bxf7 Nc5 29.f3 Rxa4 30.Rxa4 Nxa4 31.Rd3 Rb5 32.Kf2 Be5 33.g3 Rb1 34.Kg2 c5 35.Bd5 Bd4 36.Ra3 Nb6 37.c3 Rb2+ 38.Kh1 Be3 39.Ra7+ Kb8 40.Rb7+ Kc8 41.Ra7 Nxd5 42.exd5 Rb7 43.Ra3 c4 44.Nb4 Ra7 45.Rxa7 Bxa7 46.Nc6 Bb6 47.Kg2 Diagram



47...Kb7? Much better was 47...,Kd7 heading for the K-side to ward off the White pawn majority. The B is in great shape for coming in the back door via a7-g1 diagonal and eventually creating threats against White's backward c-pawn. **48.f4 Ka6 49.Kf3 Kb5** Diagram

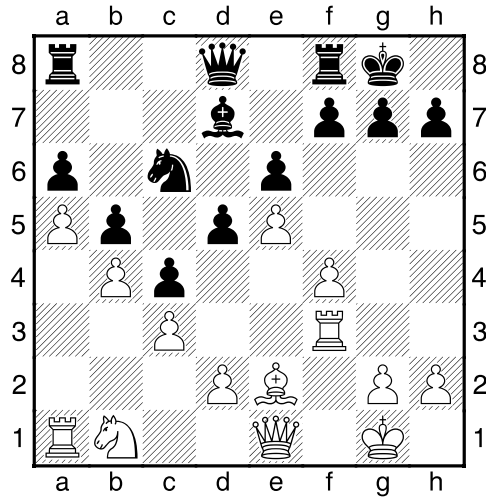


50.g4 Ba5 51.Nxa5 Kxa5 52.Ke4 Kb6 53.Kd4 Kc7 54.Kxc4 Kd7 55.Kd4 Ke7 56.c4 Kf6 57.c5 1-0

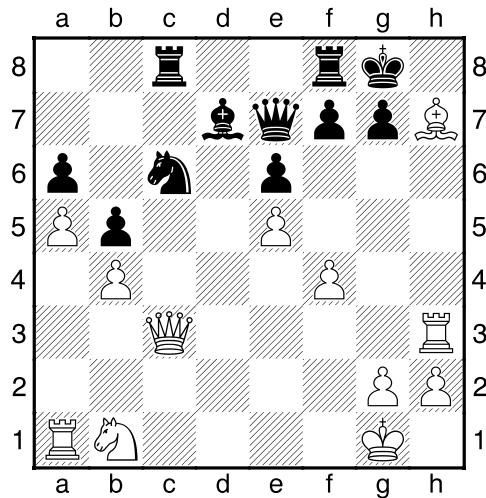
Willard, Phil (1508) - Rutkofske, Lon (1996) [C00] French Defense

Goodell's Hot Cashew Mini-Swiss - Port Huron Chess Club (2), 02.05.1990

1.e4 e6 2.f4 d5 3.e5 c5 4.c3 c4 5.Nf3 Bc5 6.b3 b5 7.a4 Bd7 8.Ba3 Qc7 9.Bxc5 Qxc5 10.b4 Qb6? Here I waste a tempo. Usually in a closed position, it isn't so important, but the position is still in flux, and Black can ill afford to waste precious time! Better was 10...Oe7. White has some potential targets after 11.ab! since Black isn't mobilized. If 11...Bb5 12.Na3, followed by 13.Nc2 heading for the hole at d4 or even the K-side with Ne3 and g4. At this juncture, White has a solid game with most of the play, as Black needs to untangle himself. **11.a5 Qd8 12.Be2 a6 13.0-0 Ne7 14.Nd4** With the position locked on the Black now needs do develop and kick the N on d4, while moving toward the coming battle on the K-side. **14...Nbc6 15.Nxc6 Nxc6 16.Qe1 0-0 17.Rf3!!** Diagram



A superb move that changes everything and now things will get dicey for Black. **17...d4 18.d3 dxc3 19.Qxc3 cxd3 20.Bxd3 Rc8 21.Rh3 Qe7??? 22.Bxh7+!** Diagram



Draw Agreed??? Here I thought I was the one getting swindled, but as it turns out, I ended up the swindler, since Phil had a forced mate with 22...,Kh8 23. Bg6!!, Kg8 24.Rh8+, Kh8 25. Qh3+, Qh4 26.Qh5+, Kg8 27.Qh7 mate!!!

Calendar of Coming Events:

Registration for all events begins at 6:30 PM or via email, first round begins at 7:00 PM.

Nov. 11th Duncan Turkey Gobbler Tournament - EF: A: \$2.00, Under19:\$1.00

Dec. 9th G/5 -Jingle Bells Double Round Robin - EF: A: \$2.00, Under19:\$1.00

Jan. 13th PHCC Championships – 5 Rd. Swiss – G/90 - EF: A: \$5.00, Under19:\$2.00 Game every other Thursday- details in the December Newsletter

Blasts from the Past

The cartoon was drawn by Dean Young, a student at Port Huron Northern High School for the January 1981 issue of **Chess Chatter**. Dean was a junior at that time, and about 17. After 29 years, it seems fitting to showcase his work again, illustrating the variety of talents and contributions of PHCC members to **Chess Chatter**. Thanks Dean!



Dues News The Port Huron Chess Club will begin to collect dues for the coming year. While dues are not required for anyone interested in playing at the club, they are required for those competing in tournament play. Annual Dues are \$2.00 for adults and \$1.00 for those under 19. Dues funds are used to offset miscellaneous expenses not funded by the Recreation Department.