

# ChessZone Magazine



## Table of contents: # 07, 2012

Games .....	4
(01) Carlsen,M (2835) - Kramnik,V (2801) [E36].....	4
(02) Morozevich,A (2769) - Carlsen,M (2835) [E35].....	6
(03) Samojlov,A (2290) - Fedorov,Alex (2571) [B30] .....	8
(04) Frolyanov,D (2564) - Sjugirov,S (2625) [B14] .....	10
(05) Dubov,Danii (2569) - Potkin,V (2642) [D10] .....	11
(06) Alekseev,Evgeny (2677) - Prizant,Ja (2524) [E09].....	13
(07) Ipatov,Alexander (2581) - Firat,B (2408) [D30] .....	15
(08) Ponomariov,R (2726) - Caruana,F (2775) [B51].....	16
(09) Kamsky,G (2744) - Le Quang Liem (2693) [A31].....	18
(10) Gustafsson,J (2629) - Kramnik,V (2799) [E94] .....	19
Editorial staff:.....	21

**Dear readers!**

**ChessZone Magazine is open for your advertising materials.  
We have various ad packages at affordable rates!**

**We're also interested in cooperation with advertising agencies,  
and could offer great commissions for anyone  
who could bring an advertisers to us.**

**Please contact us for details**

**[chesszone@ya.ru](mailto:chesszone@ya.ru)**

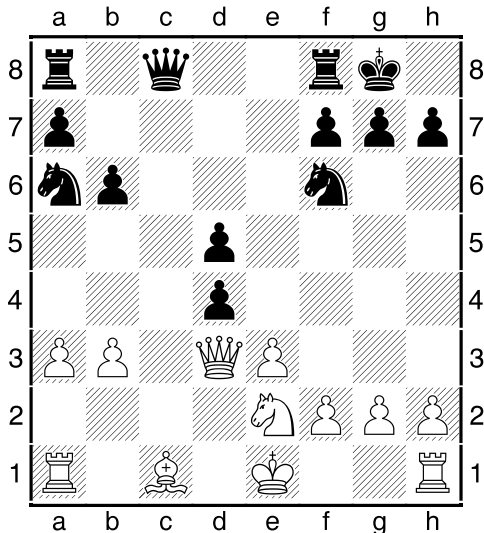
## Games

### (01) Carlsen, M (2835) - Kramnik, V (2801) [E36]

7th Mikhail Tal Memorial Moscow RUS (1), 08.06.2012

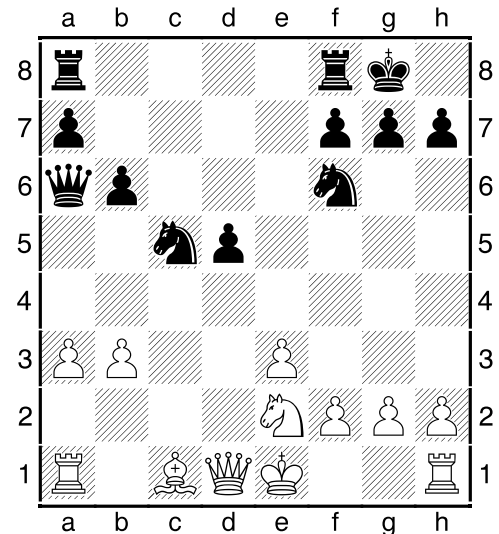
[IM Iljin, T]

**1.d4 Nf6 2.c4 e6 3.Nc3 Bb4 4.Qc2 0-0 5.a3 Bxc3+ 6.Qxc3 d5 7.e3** Black chose a modest extension, fearing the opening 'bombs' from the World ex-Champion in more common options. [Earlier the same opponents played 7.cxd5 Ne4! 8.Qc2 exd5 9.Bf4 Nc6 10.e3 Re8 11.Nf3 g5 12.Bg3 g4 13.Ne5 Nxe5 14.Bxe5 c5 15.Bd3 Bf5, and Black is already better, Carlsen - Kramnik, Moscow, 2009.; 7.Nf3 dxc4 8.Qxc4 b6 9.Bg5 Ba6 10.Qa4 c5 11.dxc5 bxc5 12.Rd1 Qb6 13.Bxf6 gxf6 14.Rd2 Nc6 15.Qg4+ Kh8 16.Qh4 Kg7 17.Qg4+ - Here White managed to perpetual check, Carlsen - Kramnik, Dortmund, 2009).] **7...b6 8.cxd5 exd5!** [One year ago in the rapid game between the same partners was: 8...Nxd5 9.Qc2 Ba6 10.Bxa6 Nxa6 11.e4 Ne7 12.Bg5?! h6 13.Bxe7 Qxe7 14.Qc6 e5 15.Qb5 exd4 16.Qxa6 Qxe4+ with excellent compensation for the having given piece, Carlsen - Kramnik, Moscow(rapid), 2011.] **9.Bd3 Ba6 10.Bxa6 Nxa6 11.Qd3 Qc8 12.Ne2 c5** Black has free and pleasant game. **13.b3 cxd4**



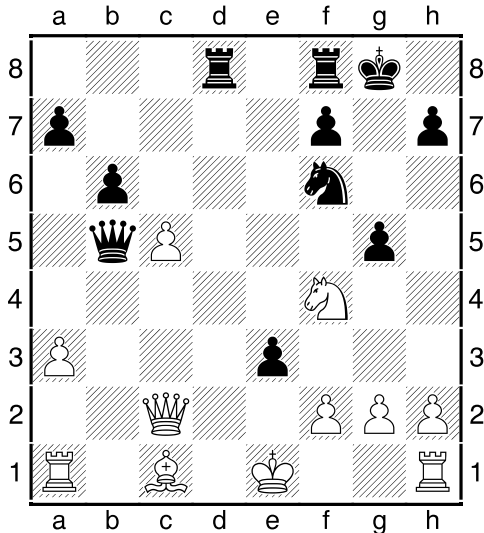
**14.Qxd4?!** This is overconfident! [14.exd4!? Nc7 15.0-0 Re8 16.Bf4 with a

minimum advantage, without much risk of losing.] **14...Nc5 15.Qd1 Qa6**

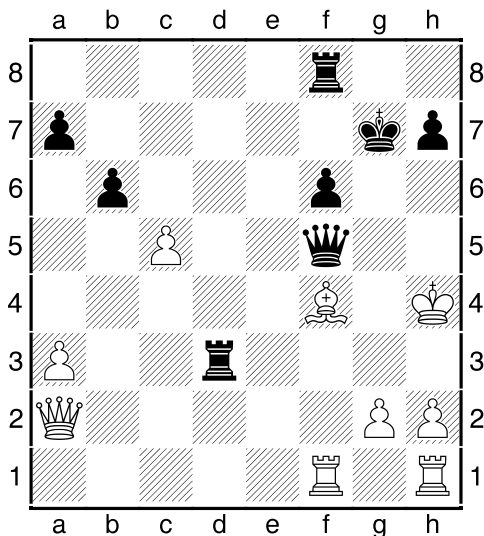


**16.Nf4?** Sounds like a challenge! Like, chess laws haven't written to me, I can play like I want! And often this tactic works! Sleek elite GMs don't survive the intense struggle and 'inexplicably' lose positions with big advantage almost every round! But not this time! [Bad or good there, but White should have, at last, to attend the fate of His king: 16.0-0 Nxb3 17.Qxb3 Qxe2 18.Bb2 Qc4 19.Qd1! with enough counterplay 19...Ne4 20.Qg4 Nf6 21.Qd1 Ne4=] **16...d4!** Natural and strong! **17.b4 dxe3** [In case of 17...Nd5 18.Nxd5 Nd3+ 19.Kd2 Nxf2 (19...dxe3+ 20.fxe3 Nxb4) 20.Qe2 dxe3+ 21.Ke1 Qb7 despite numerous complications white safely rescued: 22.Qf3 Kh8 23.Nxe3 Qxf3 24.gxf3 Nxf1 25.Kf1 Rfc8 26.Kg1 Rc3 27.Kxh1 Re8 28.Kg2 Rcx3 29.Bxe3 Rxe3 30.Kf2 Rb3 31.Rc1 h6 32.Rc7 Rxa3 33.Rxf7] **18.bxc5 Qa5+ 19.Kf1 Rad8 20.Qc2 Qb5+ 21.Ke1 Qa5+** Here Black decides to roll up the fight, satisfied by perpetual check. In my opinion, could and should have to continue the game: [21...g5!



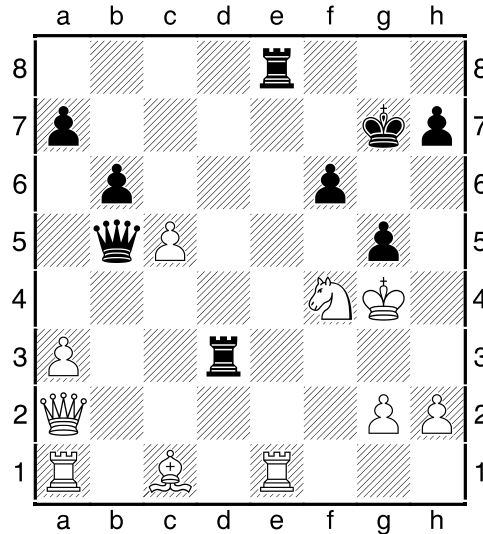


Famous GM and commentator S. Shipov offers here 22.fxe3! and explains that this position is not easy to estimate, even in the analysis. But in my opinion Black has clear edge! (inglorious knight's retreat leads to tragic consequences for White: 22.Nh3? exf2+ 23.Kxf2 Ng4+ 24.Kg3 Rd3+ 25.Kxg4 Qd7+ (much harder to gain success after the quiet, and 'decisive' move 25...f6, proposed by strong GM, online commentator K. Sakaev 26.Qa2+ Kg7 27.Nf4! Re8 (27...gxf4 28.Bxf4 Qd7+ 29.Kh4 Qf5 30.Qe2 (The naive move 30.Raf1?



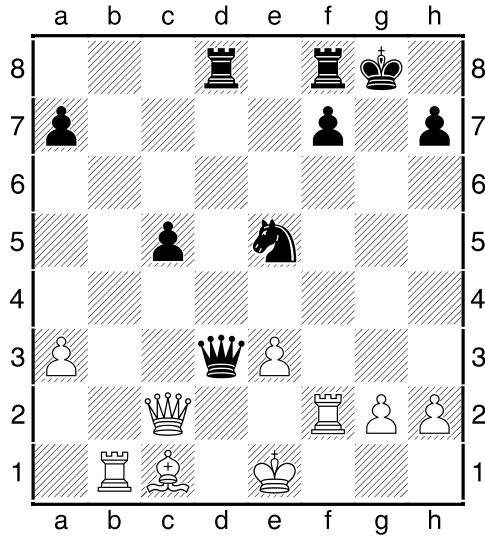
leads for a spectacular ending: 30...Kg6!! 31.Qe2 Qg5+! 32.Bxg5 fxc5+ 33.Kg4 h5#) 30...Qxf4+ 31.Qg4+ Qxg4+ 32.Kxg4 bxc5 33.Rhd1, and game is closer to the draw

than to the Black's victory.) 28.Re1!!

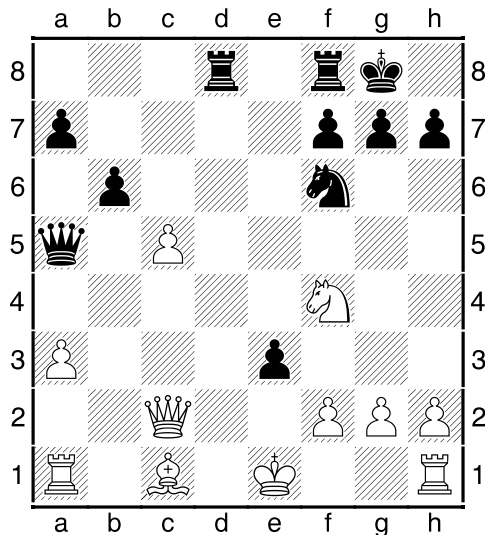


Only chance for protection! To separate the Black monarch with his rook-defender White able to gift His own rook to his rival! (Bad is 28.Ne6+? Kg6 29.g3 Qa4+ 30.Bf4 Qe4 31.Kh3 g4+ 32.Kh4 Rxe6) 28...Rxe1 29.Nh5+ Kf8! (After inaccurate 29...Kh8 White close to save the game: 30.Qf7! (immediately loses 30.Nxf6 Rb3 31.Bxg5 Re2) 30...Rd4+ 31.Bf4! Qe2+ 32.Kh3 Qe7 33.Qxe7 Rxe7 34.cxb6 gxf4 35.Rb1 axb6 36.Rxb6 Re3+ 37.g3 Kg8 38.Rb7 f3 (almost the same is 38...f5 39.Nf6+ Kf8 40.Nxh7+ Ke8 41.Nf6+ Kd8 42.Rb5 fxc3 43.Rxf5 gxh2+ 44.Kxh2 Rd2+ 45.Kg1 Re1+ 46.Rf1 Ree2 47.Rf4) 39.Nxf6+ Kf8 40.Nxh7+ Ke8 41.Nf6+ Kd8 42.Rf7 After the incredible defense the worst is behind.) 30.Nxf6 Rd4+ 31.Kh5 Rh4+ 32.Kxg5 Rc4! 33.Nd7+ (33.Kh6 Re6 34.Bg5 Qe8; 33.Nxh7+ Ke7 34.Qf2 Qxc5+ 35.Qxc5+ Rxc5+) 33...Qxd7 34.Qxc4 Qe7+ 35.Kf4 Qh4+ 36.Kf3 Qxc4 37.Bh6+ Kf7 38.Rxe1 bxc5+, and it should be recognized that the win here - is the question of technique.) 26.Kh5 (26.Kxg5 h6+ 27.Kh4 Qe7+ 28.Kh5 Rfd8 29.Bxh6 R8d5+ 30.Ng5 Qe4 heavy black pieces literally crushed the White's army, and one queen here not pay off: 31.Qxd3 Qxd3 32.Rae1 Qg6+ 33.Kg4 Qxh6+ и т.д) 26...Qf5! 27.Qxd3 Qxd3 28.Bxg5 h6 29.Bf4 Kh7+) 22...gxf4 23.Rf1 Nd7 24.Rxf4 Ne5 25.Rb1 (25.a4 Qd3 26.Ra2 Qxc2 27.Rxc2 Nd3+) 25...Qd3

26.Rf2 bxc5



] 22.Kf1 Qb5+ 23.Ke1 Qa5+



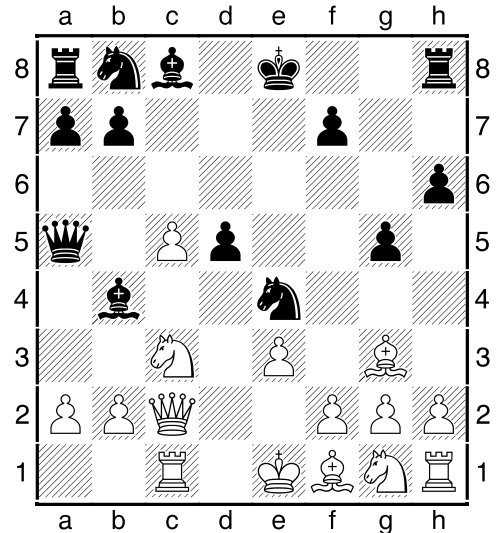
S½-½

(02) Morozevich,A (2769) - Carlsen,M (2835) [E35]

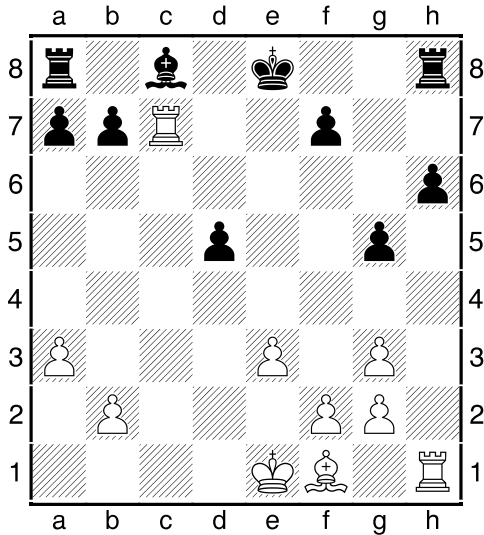
7th Mikhail Tal Memorial Moscow RUS (2), 09.06.2012

[IM Ijgin, T]

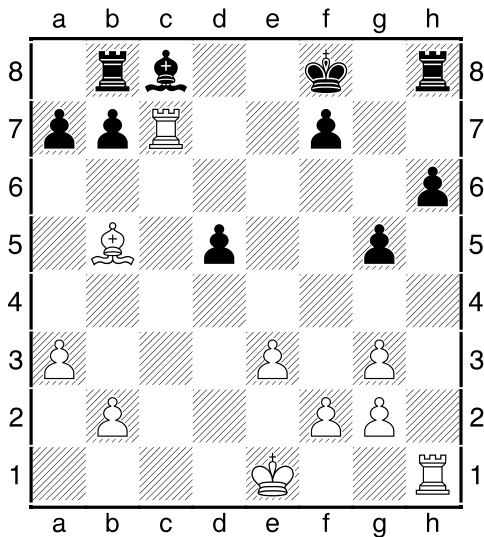
1.d4 Nf6 2.c4 e6 3.Nc3 Bb4 4.Qc2 d5 5.cxd5 exd5 6.Bg5 h6 7.Bh4 c5 8.dxc5 g5 9.Bg3 Ne4 10.e3 Qa5 11.Rc1



On the board is the hack position from Al-ekhine's system of Nimzo-Indian defense which probably already known to each one. But here the leader of the world ranking something mixed up and made a rare suspicious move, leading to a difficult position: **11...Nd7?! 12.Nge2 Ndx5** [The 'brave' pawn taking leads to very difficult situation due to the unexpected maneuver of white King: 12...Qxa2 ~~в-а неидно мѣа коя~~ 13.Kd1! Bxc3 (13...Qc4? 14.Nf4 Nxc3+ 15.bxc3 Qxc3 16.Qxc3 Bxc3 17.Nxd5 Ba5 18.Bc7 b6 19.Bb5+-; 13...Qa5 14.Nxe4 dxe4 15.Qxe4+ Kf8 16.Bd6+ Kg7 17.Qd4+f6 18.Rc4+-) 14.Nxc3 Nxc3+ 15.Qxc3 0-0 16.h4 g4 17.Bd3 with heavy initiative.] **13.a3 Bxc3+ 14.Nxc3 Nxc3 15.Qxc3 Qxc3+ 16.Rxc3 Ne4 17.Rc7 Nxc3 18.hxg3**

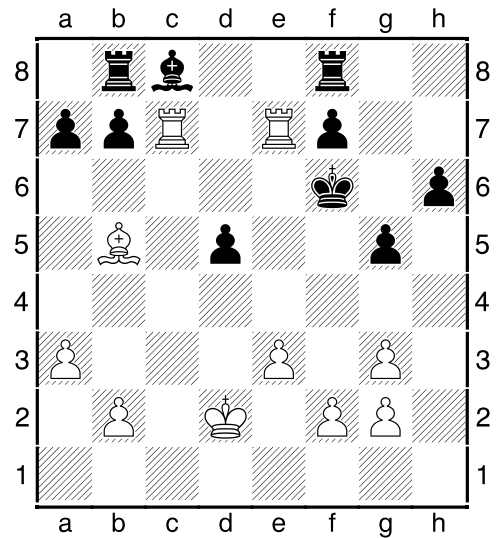


Many commentators have evaluated this position as winning for White. Let's see whether this is so. Of course, the white rooks, unlike the black colleagues, are very active. Encouraging also the presence of black central isolated pawn. But in any case, White can not relax yet, because in chance of any His carelessness, the opponent can quickly develop his pieces and equalize this ending. **18...Rb8 19.Bb5+** Correctly! The black monarch should be rejected to the less convenient camp. [The advance 19.f4 looks too early: 19...Be6 20.fxg5 Kd8! 21.Rc1 h5! , and triple white pawns only cause the regret. So the futher play to win is unlikely to succeed.] **19...Kf8**

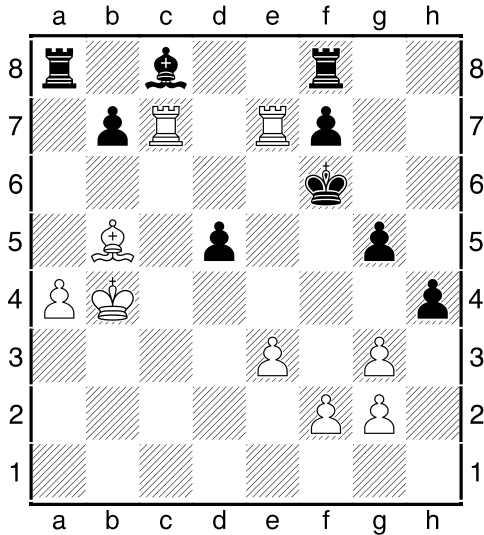


**20.Kd2?!** [here, taking advantage of the

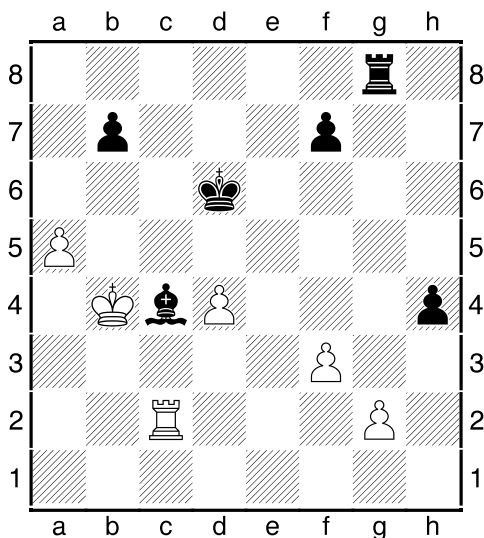
temporary disconnection of the opponent's pieces, White could play more active and stronger: 20.f4! Kg7 (In event of 20...gxf4 White can win the pawn: 21.gxf4 Kg7 22.Rh5 Be6 23.Bd7! Bxd7 24.Rxd7 Rhd8 25.Rhx5 Rxd7 26.Rxd7) 21.fxg5 Be6 22.Bd7 hxg5 23.Rxh8 Kxh8 24.Bxe6 fxe6 25.Re7 , but face some technical difficulties after 25...Rc8] **20...Kg7 21.Rhc1 Rd8** [In case of 21...Be6 White can disturb the rival from another side: 22.Be2 Rhd8 (22...g4?! 23.Re7 Rhe8 24.Rxe8 Rxe8 25.Rc7 Rb8 26.Kc3; 22...Rhc8? 23.Rxc8 Rxc8 24.Rxc8 Bxc8 25.Bf3 Be6 26.Kc3 Kf6 27.Kd4) 23.Kc3 d4+ 24.exd4 Rbc8 25.Kd3! Bf5+ 26.Ke3 Re8+ 27.Kd2 Rcd8 28.R1c4 Be4 29.Bh5! Bd5 30.R4c5 and White keeps an extra pawn. 30...b6? 31.Rxd5! Rxd5 32.Bxf7] **22.Re7 Kf6 23.Rcc7 Rf8**



**24.b4?!** And again – the superficial solution. [Very strong is the maneuver 24.Be2! a5 25.Bh5 Be6 26.Rxb7 Rxb7 27.Rxb7 with excellent winning chances.] **24...a6 25.Bd3 a5!? 26.bxa5 Ra8 27.Bb5 Rxa5 28.a4 Ra8 29.Kc3 h5 30.Kb4 h4**



**31.Re8?** Splashing out almost all the remaining edge. I can't understand how can White to trade His active rook on black piece, standing on the f8?! [31.gxh4 gxh4 32.a5 Be6 33.Rxb7 d4 34.exd4 Bd5 35.Bc4 Bxg2⇌; White holds winning chances with 31.a5! Be6 32.Rxb7 d4 33.e4 (33.exd4 Bd5) 33...hxg3 34.fxg3 Ke5 35.a6 Kxe4 36.a7 Ke5 (36...d3 37.Rbd7) 37.Rb6 Rfd8 38.Bc6 Rac8 39.Bd7 Rc4+ 40.Kb5 Rc7 41.Rb8 Rxa7 42.Rxd8 Kf6 43.Rxe6+ fxe6 44.Bc6] **31...Rxe8 32.Bxe8 Be6 33.Bb5 d4 34.gxh4 gxh4 35.exd4 Bd5 36.f3 Rg8 37.Rc2 Ke7 38.a5 Kd6 39.Bc4 Bxc4**



**40.Rxc4?!** White suggested moving into pawn endgame, but instantly He himself

got scared! But in vain: [40.Kxc4! Rc8+ 41.Kd3 Rxc2? 42.Kxc2 Kc6 43.Kd3 Kb5 44.Ke4 Kxa5 45.Ke5!? b5 46.d5 b4 47.d6 Kb6 48.Kf6 Kc6 49.Ke7 b3 50.d7 b2 51.d8Q b1Q 52.Qd7+ Kc5 53.Qd6+ Kc4 54.Qf4+ Kc3 55.Qxh4 with healthy extra pawn and almost winning position.] **40...Rxc2** What a metamorphosis! Now White needs to show accuracy. As a result, this long-suffering game ends to a draw: **41.Rc5 h3 42.Rh5 h2 43.Kc4 Rc2+ 44.Kd3 Ra2 45.Ke4 f5+ 46.Kf4 Kd5 47.Rxf5+ Kxd4 48.Rh5 Rg2 49.Rh7 Kd3 50.Ke5 Ke2 51.f4 Kf1 52.f5 Ra2 53.f6 Rxa5+ 54.Ke6 Ra6+ 55.Ke7 Rxf6 56.Kxf6 Kg1 57.Ke5 h1Q 58.Rxh1+ Kxh1 59.Kd4 ½-½**

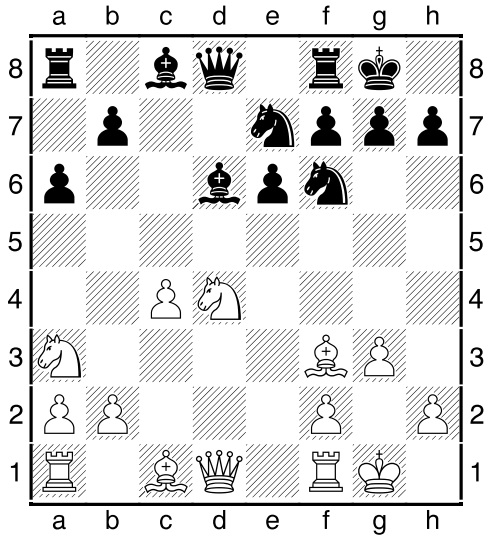
**(03) Samojlov,A (2290) - Fedorov,Alex (2571) [B30]**

16th Voronezh Master Open Voronezh RUS (1.12), 12.06.2012

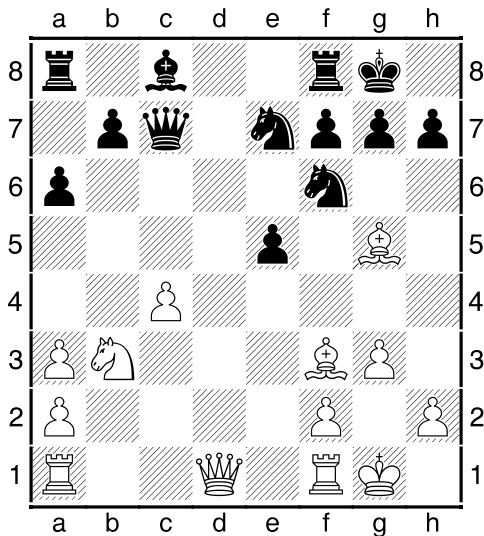
[IM Iljin, T]

**1.e4 c5 2.Nf3 Nc6 3.Bb5 e6 4.0-0 Nge7 5.c3 a6** [5...d5!? 6.exd5 Nxd5 7.Bxc6+ bxc6 8.c4 Ne7! 9.d4 cxd4 10.Nxd4 e5 11.Nf3 Qxd1 12.Rxd1 Bg4 13.h3 Bxf3 14.gxf3 Ng6 15.Nc3 Be7 and Black is already better in this ending.] **6.Be2 d5 7.exd5 Nxd5 8.d4 cxd4 9.Nxd4 Bd6** [9...Bd7!?, keeping healthy pawn structure on the Queen-side.] **10.Bf3** [Benefit from exchanging the knights is not obvious: 10.Nxc6 bxc6 11.Nd2 0-0 12.Nc4 Bc7 13.Re1 c5 14.Bf3 Bb7 with good game for Black.] **10...Nce7 11.Na3** Where does the knight go? A big secret! Of course, it was better to send it to the center: [11.Nd2 Qc7 12.g3 0-0 13.Ne4] **11...0-0 12.c4** [Maybe better is to sacrifice the pawn: 12.Nc4 Bxh2+ 13.Kxh2 Qc7+ 14.Kg1 Qxc4 15.Qb3! with compensation.] **12...Nf6 13.g3**

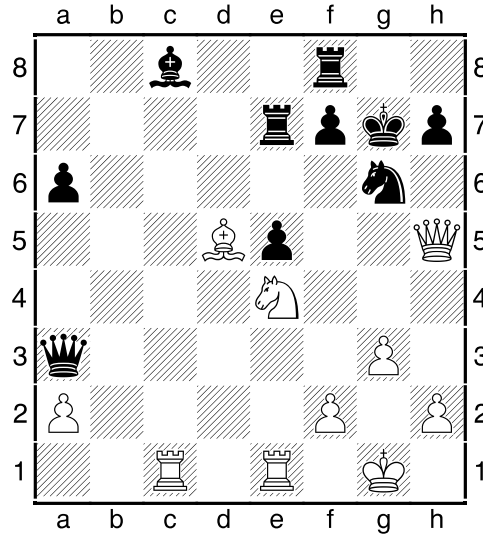




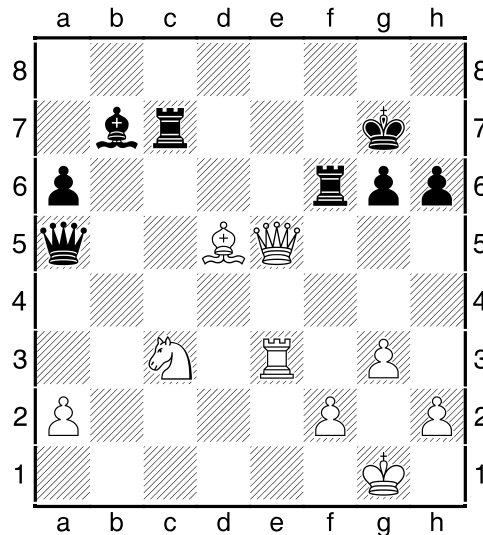
**13...Bxa3** Black should not have to give a strong bishop for a knight standing on the edge of the board! Better is [13...e5!? 14.Nb3 e4 15.Bg2 Bg4 16.Qc2 Nc6] **14.bxa3 e5 15.Nb3 Qc7 16.Bg5!**



Here are the first inconvenience of exchanging the black bishop! **16...Qxc4?!** Black plays with the fire! [16...Be6!]? **17.Bxf6 gxf6 18.Rc1 Qa4 19.Qd6!** Queen went to God knows where, leaving unattended the king and the rest of the court. But white still has to work to create an attack because the loyal black knight is still on the lookout! **19...Ng6 20.Qxf6 Bh3 21.Rfe1 Rae8 22.Bxb7 Re6 23.Qg5 Re7 24.Bd5 Qxa3 25.Nc5 Kg7 26.Qh5 Bc8 27.Ne4**



**27...h6?** Unnecessary weakening and waste of time! [Black should urgently establish counterplay: 27...f5 28.Ng5 Bd7! 29.Qxh7+ Kf6 30.Qh5 Rh8 31.Qf3 Qxf3 32.Nxf3 e4 with significant counterchances.] **28.Rc6 Qa5 29.Nc3?** [29.Rd1! Be6 30.Bxe6 Rxe6 31.Rxe6 fxe6 32.Rd7+ Rf7 33.Rxf7+ Kxf7 34.Qf3+, and White carries a decisive invasion.] **29...Rc7 30.Rxg6+ fxg6 31.Qxe5+ Rf6 32.Re3** The culmination of the fight! **32...Bb7?**



Gross error at the crucial moment! [it is possible that He could be saved by playing 32...Qc5 33.Ne4 Qe7 34.Qxe7+ Rxe7 35.Nxf6 Kxf6 36.Rxe7 Kxe7; on the contrary, poor is 32...Bf5? 33.g4! (33.Qe8?)

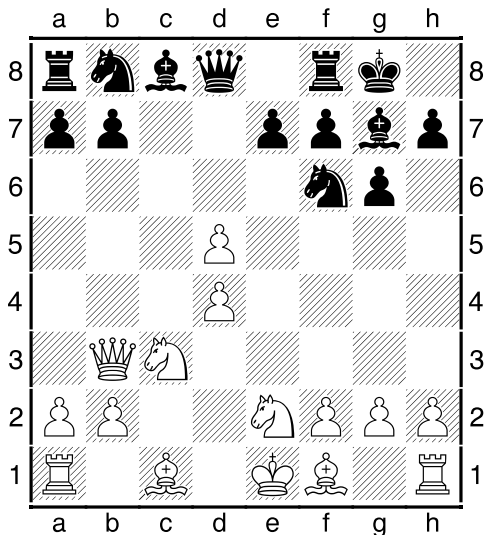
Rff7 34.Bxf7 Rxf7 35.Re7 Rxe7 36.Qxe7+ Kg8) 33...Bxg4 34.Ne4 Rc1+ 35.Kg2 Qd8 36.Rb3! with decisive effect.] **33.Rf3 1-0**

**(04) Frolyanov,D (2564) - Sjugirov,S (2625) [B14]**

65th ch-RUS HL Tyumen RUS (2), 17.06.2012

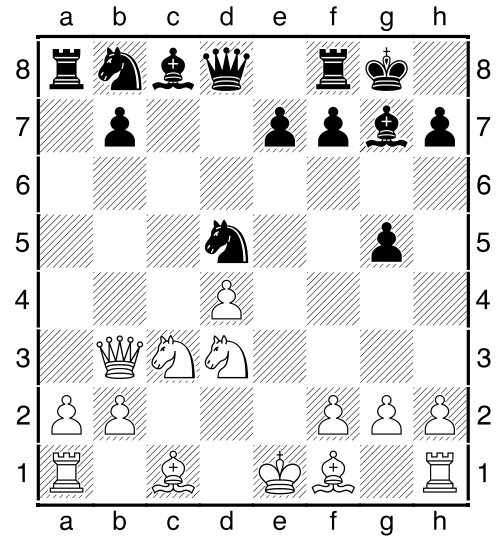
[IM Iljin, T]

**1.e4 c6 2.d4 d5 3.exd5** Panov Attack – is an infrequent visitor to the higher GM echelons. [An experienced professionals now disparage the Caro-Kann defense by good-old 3.e5 ] **3...cxd5 4.c4 Nf6 5.Nc3 g6** relatively fresh, ideological continuation! [The options 5...e6 or; 5...Nc6 have too much theory.] d5. **6.Qb3** The major version! White immediately begins to ask awkward questions about the central black infantryman. **6...Bg7 7.cxd5 0-0 8.Nge2**

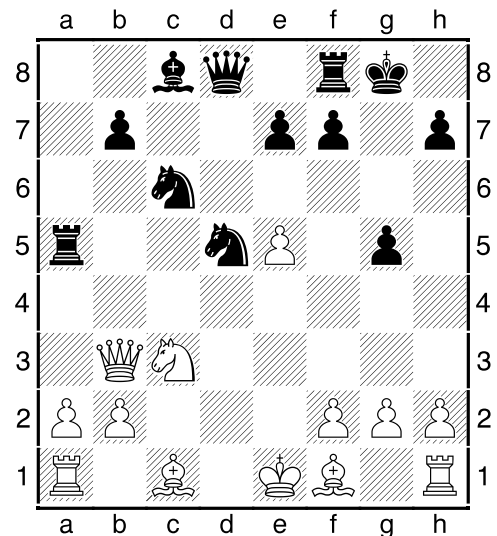


**8...a5!** This is much stronger than 'theoretical' [8...Na6 or; 8...Nbd7] **9.Nf4** [Not good is either 9.a3 a4 10.Qc4 e6 11.d6 Ne8!; or 9.a4 Na6 , and White can't get rid of the annoying black horse from the b4-outpost.] **9...a4! 10.Nxa4 g5** In the struggle for the central point all means to an end! **11.Nd3** [11.Nb6? gxf4 12.Nxa8 Qa5+ 13.Bd2 Qxa8 14.Bxf4 Bd7 15.Bd3 Ba4 with two pieces for a rook.; In event of logical move 11.Ne2 Black develops the strong initiative in the center: 11...Nxd5 12.Nac3 Ra5! 13.Bd2 Nc6 14.Ne4 Nf4 15.Bxa5 Qxa5+ 16.Qc3 Nd3+ 17.Kd2

Ndb4 with dangerous threats.] **11...Nxd5 12.Nc3**

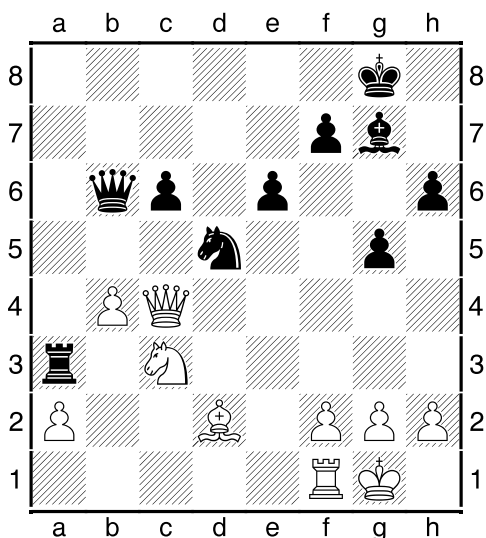


[In case of 12.Bxg5 Nc6 (also possible is 12...Qa5+ 13.Bd2 Qxa4 14.Qxd5 Nc6 15.Nc5 Qxd4 16.Qxd4 Nxd4 17.Bd3 b6 18.Ne4 Nb3) 13.Nc3 Nxd4 Black wins the exchange: 14.Qxd5 (Bad is 14.Qd1 Nxc3 15.bxc3 Qd5! 16.Be3 Nb3!) 14...Nc2+ 15.Kd1 Nxa1 16.Qxd8 Rxd8 17.Bxe7 Re8 18.Bh4 Bxc3 19.bxc3 Rxa2 etc.] **12...e6** A good solid move. But I don't like Black to cover His light-squared bishop. [Very interesting is to check the maneuver 12...Ra5!? 13.Ne5 Bxe5! 14.dxe5 Nc6

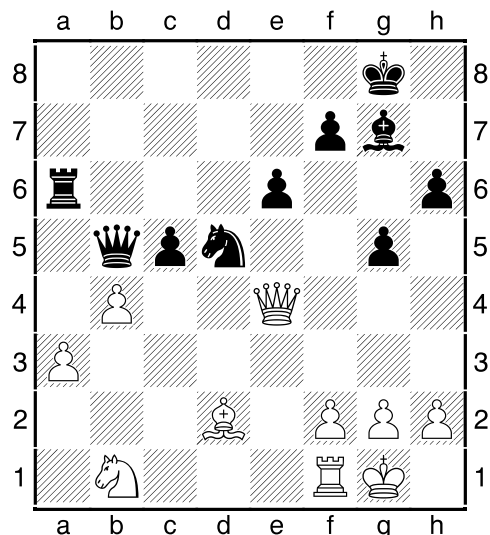


It's not so easy to find a satisfactory continuation for White here. 15.Be2 (Bad is

optimistic 15.Nxd5 Rxd5 16.Bxg5 Bg4!  
 17.f4 Nd4 18.Qc3 Qb6 with an irresistible  
 attack.) 15...Bf5! (15...Nd4?! 16.Qd1 Nxc3  
 17.bxc3 Nxe2 18.Qxe2 Qc7 19.0-0 Rxe5  
 20.Be3=) 16.Qd1 (either 16.0-0 Nd4  
 17.Qd1 Nxc3 18.bxc3 Nxe2+ 19.Qxe2 Bd3  
 20.Qg4 Bxf1 21.Bxg5 Qc8 22.Qg3 Be2+; ,  
 or 16.Nxd5 Nd4 17.Qg3 Nc2+ 18.Kf1 Qxd5  
 19.Qxg5+ Bg6 20.h4 Qxe5 21.Rb1 Nd4  
 22.Qxe5 Rxe5 23.Be3 Nxe2 24.Kxe2 Bxb1  
 25.Rxb1 Ra8 doesn't help White.)  
 16...Ncb4! 17.0-0 Nc2 18.Bxg5 Nxc3  
 19.bxc3 Nxa1 20.Qxa1 Qc7 and despite  
 the formal material prosperity, the White's  
 future is clearly worse due to the several  
 weak pawns.] **13.Ne5 Nc6 14.Nxc6 bxc6**  
**15.Bc4** [15.Bd3!? Bxd4 16.0-0 Bg7 17.Rd1  
 h6] **15...Bxd4 16.0-0 Bg7 17.Bd2 h6**  
**18.Rad1 Ba6 19.Bxa6 Rxa6 20.Qc4 Qa5**  
**21.b4** Witty, but there is no rule in chess of  
 necessarily beating. [21.h4!?] **21...Qb6**  
 [Awry is 21...Nxb4? 22.Ne4 Rb8 23.Rb1  
 Rab6 24.Rfc1! (24.Rb3 Qd5!) 24...Rb5  
 25.Rb3 Now due to dead pin Black loses  
 the material.; In chance of 21...Qa3? White  
 has the good maneuver to win the ex-  
 change: 22.Bc1 Qxc3 23.Qxa6] **22.Rb1?!  
 Ra3 23.Rb3 Rfa8** [Black could already  
 grab the pawn: 23...Bxc3!? 24.Bxc3 Rxa2]  
**24.Rxa3 Rxa3**



**25.Nb1** Unhappy retreat. [But even worse  
 is 25.Ne4 Qa6 26.Qxa6 Rxa6] **25...Ra6**  
**26.a3 Qb5 27.Qe4 c5**



**28.bxc5?** This admits the sharp activiza-  
 tion of the rival's rook. [28.Rc1!?] **28...Ra4**  
**29.Qc2 Rc4 30.Qd3 Qxc5** All the black  
 pieces have developed great activity. De-  
 spite the formal equality of the material, the  
 Black's advantage similar to a decisive  
 one. **31.h3 Rc2 32.Qe4** [An attempt to dis-  
 tract the opponent by motion the passed  
 pawn 'a' fails: 32.a4 Bd4 33.a5 Nf4 34.Bxf4  
 Bxf2+ 35.Kh1 gxf4 36.Nd2 Rc1 37.Rxc1?!  
 Qxc1+ 38.Nf1 Ba7! 39.Kh2 Qc5-+] **32...Bf6**  
**33.Qf3** [33.Bb4 Qc8 (33...Qc6 34.Nd2  
 Nxb4 35.axb4) 34.Nd2? Nxb4 35.Qxb4  
 Bc3] **33...Rb2 34.Be3** no longer willing to  
 suffer **34...Qc2!** **35.Nd2** [35.Qd1 Nxe3!  
 36.fxe3 Qxg2#] **35...Nxe3 36.Ne4 Nxf1**  
**37.Nxf6+ Kf8 38.Nd7+ Ke7 39.Ne5 Qf5**  
**40.Nc6+ Kd6 0-1**

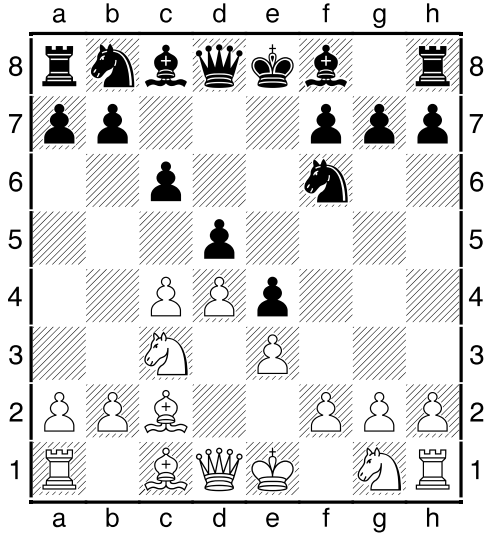
**(05) Dubov, Daniil (2569) - Potkin, V (2642) [D10]**

65th ch-RUS HL Tyumen RUS (3),  
 18.06.2012

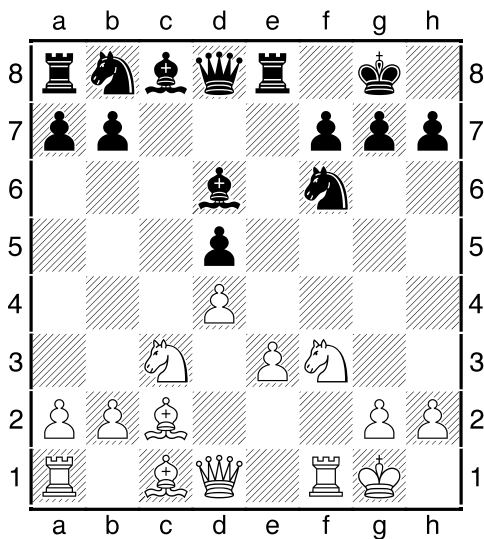
[IM Iljin, T]

**1.d4 d5 2.c4 c6 3.e3 Nf6 4.Bd3** It's curi-  
 ous and fresh idea to postpone the develop  
 of knight on c3 to avoid Meran or another  
 options which connected with capturing  
 c4-pawn and advancing b7-b5-b4 with a  
 tempo. **4...e5** And here are some down-  
 sides to White's last move - it allows the  
 opponent for an immediate promotion his  
 central pawn to e5. [4...Bg4 5.Qb3 Qb6  
 6.c5 Qxb3 7.axb3 e5 8.f3 Bh5 9.b4 and  
 White is slightly better.] **5.Nc3 e4** Natural,

though requiring continuation. [More accurate is 5...exd4 6.exd4 dxc4 7.Bxc4 Bd6] **6.Bc2**

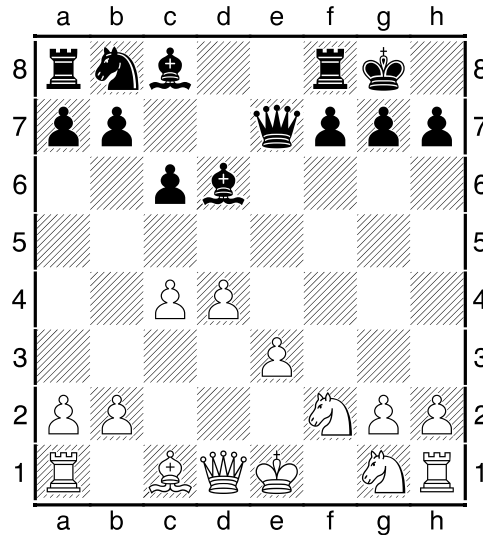


**6...Be7?!** This move is not too fit with the previous one. Better is to develop black bishop to the active position: [6...Bd6 7.f3 0-0 (7...exf3 8.Nxf3 0-0 9.0-0 Re8 This position has arisen in one of the GM A. Morozevich games (black). White missed a key point in the game and lost. It's pity moment because the game was able to get into the tablet combinations! White should play now 10.cxd5 cxd5

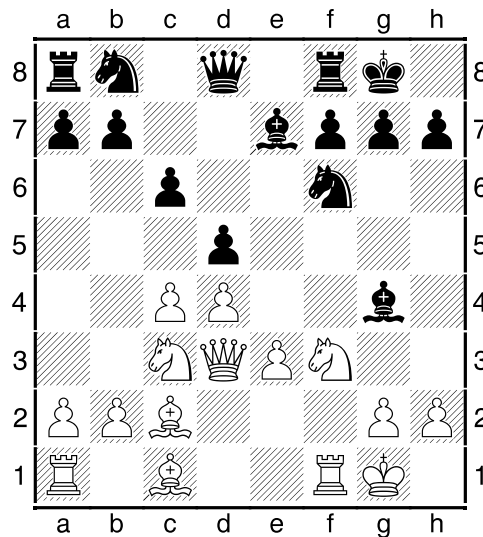


11.Ng5! h6 12.Nxf7! Kxf7 13.Qh5+ Kf8 14.e4! dxe4 15.Bxh6 with the total smash! 8.fxe4 Nxe4! (worse is 8...dxe4 9.Nge2

Be6 (9...Ng4 10.Nxe4 Bxh2 11.g3 Nd7 12.Kf1 f5 13.Nf2 Ndf6 14.Nxg4 Nxg4 15.Kg2 , and black bishop trapped) 10.b3 Ng4 11.Nxe4 Bxh2 12.g3 Nd7 13.Kf1 and White is close to catch the black bishop.) 9.Bxe4 dxe4 10.Nxe4 Qh4+ 11.Nf2 Qe7



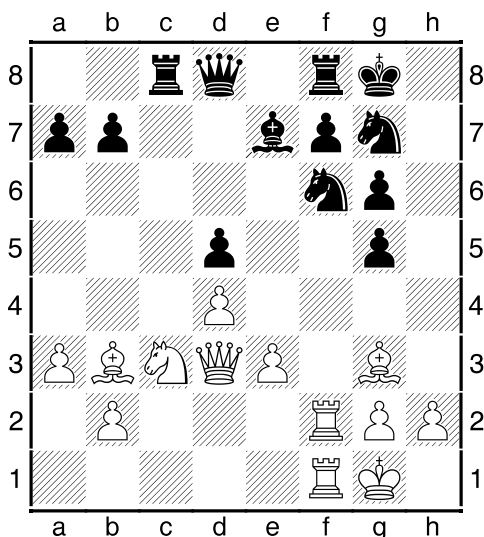
with compensation.] **7.f3 exf3 8.Nxf3 Bg4 9.0-0 0-0 10.Qd3**



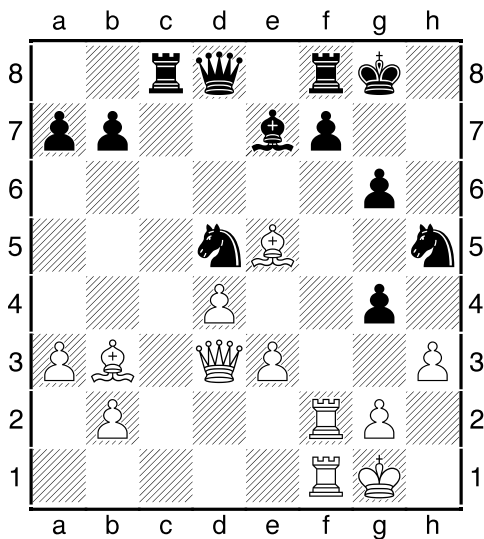
**10...Na6?!** [10...g6! 11.Qe2 (11.Ne5?! Be6 12.e4 dxe4 13.Nxe4 Nxe4 14.Qxe4 Nd7 15.Bh6 Re8) 11...Nbd7 12.h3 Bxf3 13.Rxf3 dxc4 14.Qxc4 Nb6] **11.a3 Bh5 12.Nh4 Bg6 13.Nxg6 hxg6 14.cxd5 cxd5 15.Bb3 Nc7 16.Bd2 Ne6** Black removes the knight – defender of the central pawn – and in vain! [16...Rc8!? 17.Rac1 Qd7] **17.Rae1**



**Rc8 18.Re2 Ng5 19.Be1 Ne6?** Knight jumps back and forth can not give good service for Black. [Yes, the move 19...Nge4 once lost: 20.Nxd5; but it still worth to wait: 19...Qd7 ] **20.Bh4 g5 21.Bg3 g6 22.Ref2 Ng7**



**23.h3** The mocking prevention! Black's situation is helpless, and the opponent decides to savor the position longer. [The active 23.Be5! leads to an immediate spectacular victory 23...Ng4 24.Bxd5 Nxf2 25.Qxg6!] **23...g4 24.Be5 Ngh5** It is known that in a bad position all moves are bad. But now is a lightning defeat! **25.Nxd5 Nxd5**



**26.Rxf7!** Here Black quite timely has given

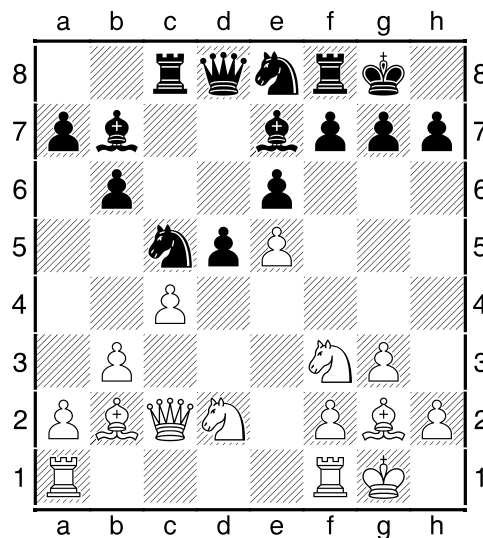
up. Despite the huge material advantage, His position crumbled into small pieces! **26...Rxf7 27.Qxg6+ Rg7 28.Qxh5 Bf8 29.Bxg7 Bxg7 30.Bxd5+ etc. 1-0**

**(06) Alekseev, Evgeny (2677) - Prizant, Ja (2524) [E09]**

65th ch-RUS HL Tyumen RUS (3), 18.06.2012

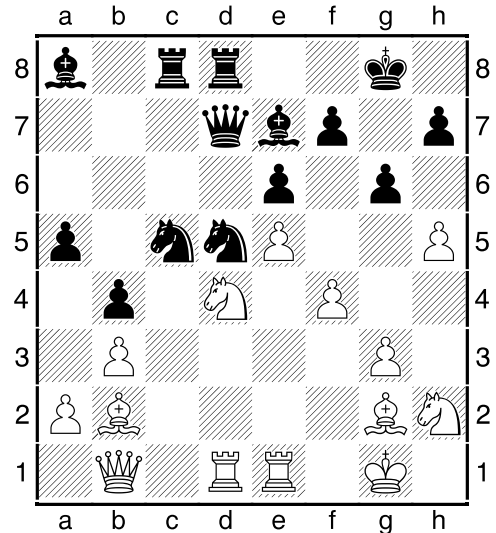
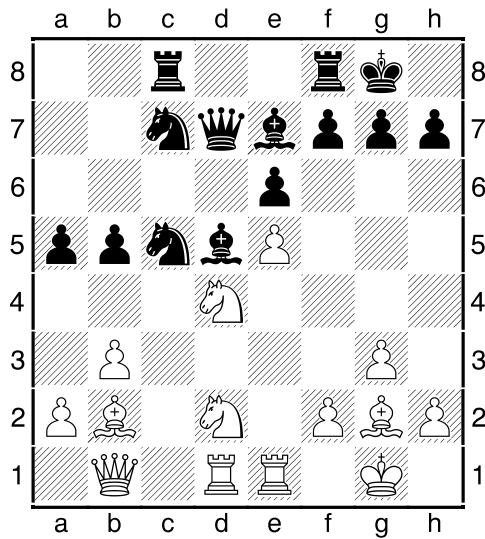
[IM Iljin, T]

**1.d4 d5 2.Nf3 c6 3.c4 e6 4.Nbd2** White apparently fears the options with the capture of the c4-pawn and makes cheesy knight's move, not really applying for opening advantage. [More natural looks 4.Qc2 but the thing: here too there is a sharp and extensive theory after 4...dxc4 5.Qxc4 b5 6.Qc2 Bb7] **4...Nf6 5.g3 Be7 6.Bg2 0-0 7.0-0 Nbd7 8.Qc2 b6 9.e4 Bb7 10.e5 Ne8 11.b3** [11.cxd5!? cxd5 12.Nb1 (Another plan - to transfer the knight-wanderer on e3: 12.Re1 Rc8 13.Qd1 Nc7 14.Nf1) 12...Rc8 13.Nc3] **11...c5** Timely undermining the center! **12.Bb2 Rc8 13.dxc5 Nxc5**



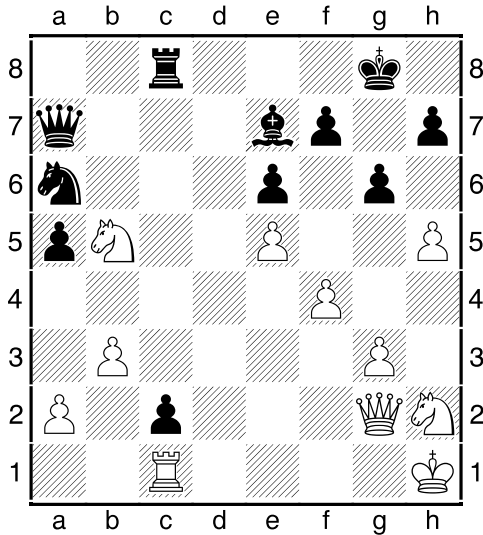
**14.Rad1** [More promising is 14.Rfd1!? Nc7 15.Nf1 (15.Nf1 15.Rac1 Qe8 16.Nd4 dxc4 17.Nxc4 Bxg2 18.Kxg2 Nd5) 15...Qe8 16.Ne3 dxc4 17.Qxc4 Nd5 18.Nxd5 Bxd5 19.Qe2 Qd7 although here Black is close to equalizing.] **14...Nc7 15.Qb1 a5 16.Rfe1 b5!** In response to a slow and somewhat mysterious actions of the opponent, Black seizes the initiative on the queenside.

17.Nd4 Qd7 18.cxd5 Bxd5



[18...Nxd5!? 19.Ne4 b4] **19.f3?! First step into the abyss.** White had to accept the fact that the opponent equalized the game: [19.Ne4 Nxe4 20.Bxe4 Bxe4 21.Qxe4 Nd5 22.Nf5 exf5 23.Rxd5 Qc6 24.Qd3 Rfd8=] **19...Ba8 20.Nf1?! Nd5** For unknown reason White removes His pieces to the passive position that allows Black to capture the key squares in the center and gain clear advantage: **21.f4 g6 22.h4** [very curious to check the pawn sacrifice by two strokes 22.f5!? Bg5! (If 22...gxf5 than 23.Nxf5 exf5 24.Bxd5 Bxd5 25.Ne3 Be4 26.Rxd7 Bxb1 27.Rxe7 Be4=; In case of 22...exf5 white keeps the balance: 23.Nxf5 Qxf5 24.Qxf5 gxf5 25.Bxd5 Rfd8 26.Bxa8 Rxa8 27.Rxd8+ Rxd8 28.Kg2) 23.f6 Rfd8 24.Qa1 Bh6 25.Bc1 Bf8 etc.] **22...b4 23.h5 Rfd8 24.Nh2**

**24...Qa7!** Very strong move! Black leads the queen of bad X-rays through the d-file and is getting ready to launch His final offensive through the knight's introduction on c3. **25.Kh1** [assaults like 25.Ng4 promise White nothing, and the the central Black's strategy prevails: 25...Nc3 26.Bxc3 bxc3 27.hxg6 hxg6 28.Nf2 Bxg2 29.Kxg2 Qb7+ 30.Nf3 Rxd1 31.Rxd1 Na6] **25...Nc3 26.Bxc3 bxc3 27.Qc2 Na6!** The magnificent black horses in all its glory! White hasn't protection against the invasion of black knight on b4. **28.Nb5** This desperate leap can change nothing. Passed pawn 'c3', like clockwork, promotes to Queen. **28...Bxg2+! 29.Qxg2 Rxd1 30.Rxd1** [In event of 30.Nxa7 Rxe1+ 31.Nf1 c2 32.Nxc8 c1Q 33.Nxe7+ Kf8 another disappointment lays in wait for the White.] **30...c2 31.Rc1**



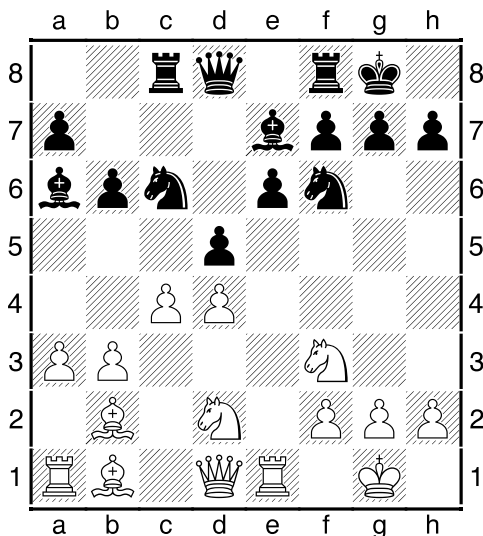
**31...Qe3! 32.Qg1 Qxg1+ 33.Kxg1 Bc5+**  
Bishop walks on c3, and White resigned.  
**0-1**

**(07) Ipatov,Alexander (2581) - Firat,B (2408) [D30]**

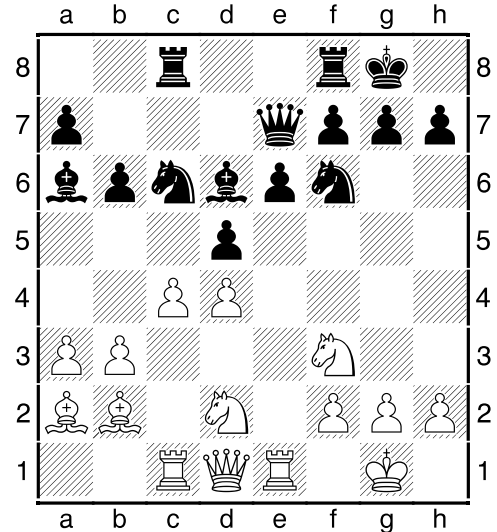
Turkish Bank Chess League 2012 Konya  
TUR (1), 11.07.2012

[IM Iljin, T]

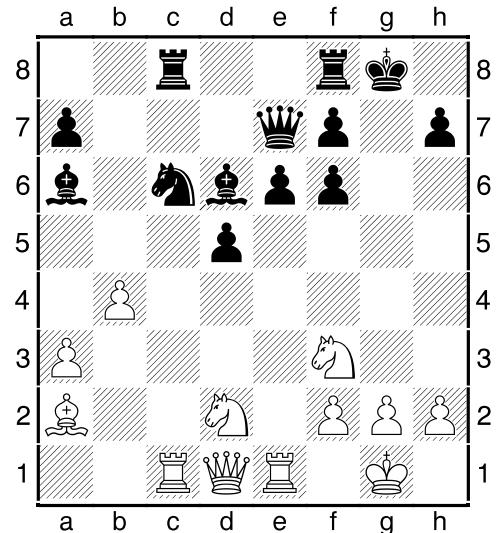
**1.d4 d5 2.c4 e6 3.Nf3 Nf6 4.e3 Be7 5.b3 0-0 6.Bd3 c5 7.0-0 cxd4 8.exd4 Nc6** This relatively rare opening system is attractive for White. **9.Bb2** Furthermore, this choice is almost always – a surprise for the opponent, which gives additional benefits. **9...b6 10.Nbd2 Nb4 11.Bb1 Ba6 12.Re1 Rc8 13.a3 Nc6**



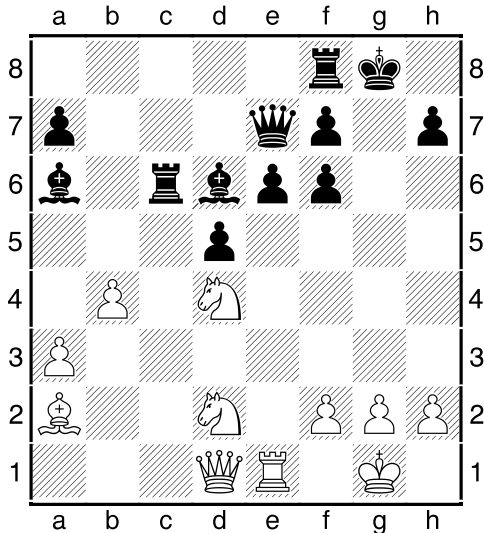
**14.Ba2?!** This move produces a depressing effect. Voluntarily put an elephant so that it rests on the fence of its own pawns – it is something! [14.Bd3!? Bd6 15.Rc1] **14...Bd6 15.Rc1 Qe7**



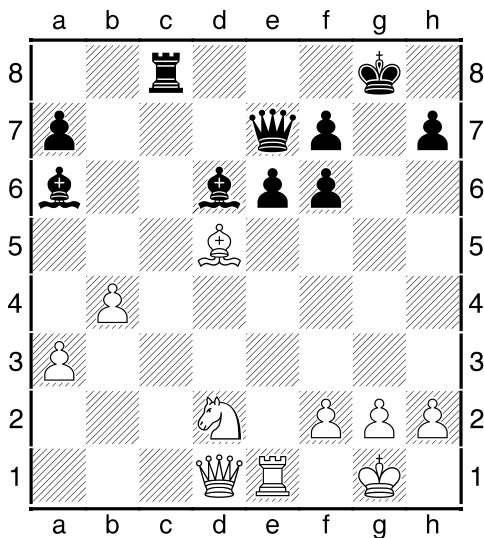
**16.c5!?** At all costs try to activate the bishop! [16.b4!? dxc4 17.Bxc4 Bxc4 18.Nxc4 Bf4 19.Rc2 with mutual chances.] **16...bxc5 17.dxc5 Bxc5 18.Bxf6 gxf6 19.b4 Bd6**



**20.Rxc6** And this is the excesses! White should just regain the pawn: [20.Bxd5 Ne5 21.Nxe5 Rxc1 22.Qxc1 Bxe5 23.Qc6!]=] **20...Rxc6 21.Nd4**



**21...Rfc8** [More precisely is 21...Rc3 which could lead to non-standard endgame with some preponderance of Black: 22.b5 (22.Nf5?! exf5 23.Rxe7 Bxe7 24.g3 Rxa3 25.Bb1 Rb8 with clear edge) 22...Rfc8 23.bxa6 Rc1 24.Qxc1 Rxc1 25.Rxc1 Bf4] **22.Nxc6 Rxc6 23.Bxd5 Rc8**



**24.Qa4??** Alas, even high level Grandmasters are just people. How many times all repeated: the window leaf! The window leaf!! The window leaf!!! After the text move, Black licked His lips and ate the bishop: **24...exd5! 25.Nf3 Be2** [Also enough for win is 25...Qb7 26.Nd4 Bd3] **26.Nd4** [26.h3 Bxf3!] **26...Qe5** [More spectacular is 26...Bg4 ] **27.g3 Qxd4 28.Rxe2 Bf8 29.Kg2 Qc4 30.Rd2 Bh6 31.Rd1 Qe2**

**32.Rf1 Qe4+ 33.Kh3 Qe7 34.Qa6** On top of that, He caught the exchange of queens and rather late surrendered. **34...Qe6+ 0-1**

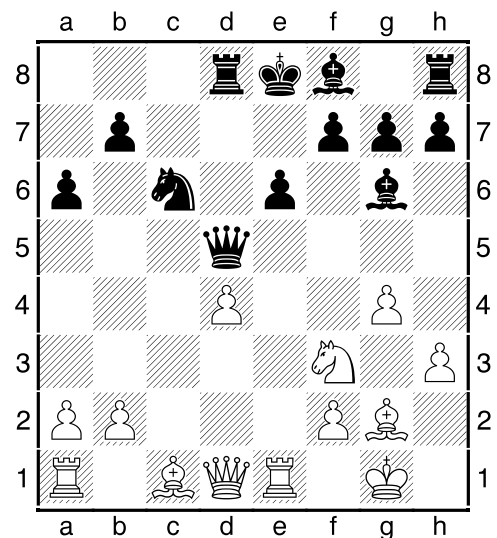
**(08) Ponomariov,R (2726) - Caruana,F (2775) [B51]**

40th GM Dortmund GER (2), 14.07.2012

[IM Iljin, T]

**1.e4 c5 2.Nf3 Nc6 3.Bb5 d6 4.0-0 Bd7 5.Re1 Nf6 6.c3 a6 7.Bf1 Bg4 8.h3 Bxf3**

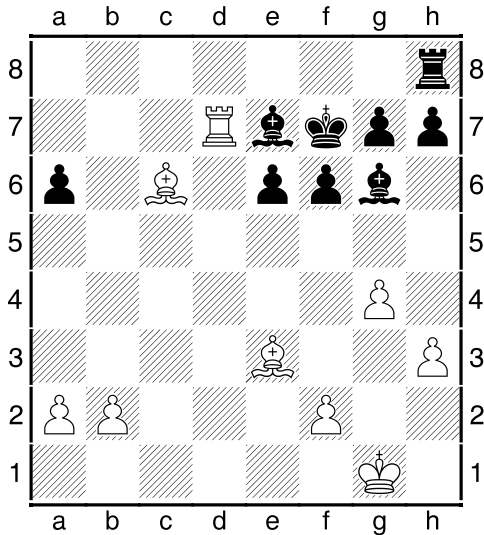
[Of course, He does not want to exchange the strong bishop on the enemy's knight, but the alternative 8...Bh5 leads to unpleasant position for Black after the active replica 9.g4! Bg6 , and now – 10.d4! cxd4 (unsatisfactory as 10...Nxe4? 11.d5 Nb8 12.Rxe4 Bxe4 13.Qa4+; and 10...Bxe4? 11.Rxe4 Nxe4 12.d5) 11.cxd4 d5 12.exd5 (Not bad is 12.e5!? Ne4 13.e6 fxe6 14.Nc3 And Black can not complete development without material loss. The best chance is to give the pawn back: 14...e5 15.Nxe4 Bxe4 16.Ng5 Nxd4 17.Nxe4 dxe4 18.Rxe4 g6 19.Be3 Bg7 20.Bxd4 exd4 21.Qb3 but now also the initiative is on White's side.It is not so easy for Black to divert his king in a safe place.) 12...Nxd5 13.Nc3 e6 It would seem, and what's next? Black seemed to be firmly entrenched at the d5-square. But this impression is deceptive. 14.Nxd5 Qxd5 15.Bg2 Rd8



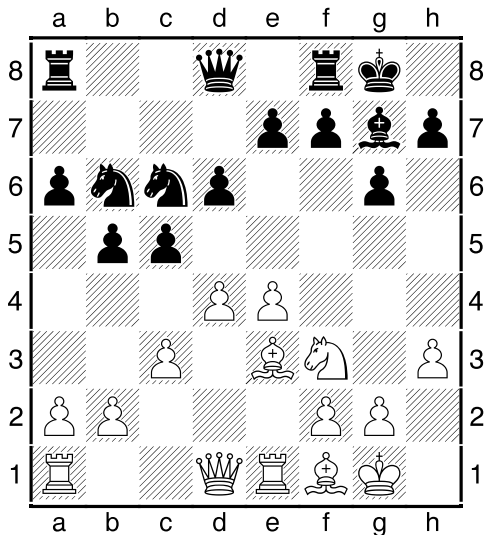
**16.Bg5! f6** (In case of 'pattern" 16...Be7? White gains the clear edge practically by



force: 17.Ne5 Qb5 18.a4 Qb6 19.Bxc6+ bxc6 20.Bxe7 Kxe7 21.Qf3 Rd5 22.Rac1 Rc8 23.Nxc6+ Rxc6 24.Qxd5! Rxc1 25.Qg5+ f6 26.Qxc1+-) 17.Ne5! Qxd4 18.Nxc6 Qxd1 19.Raxd1 Rxd1 20.Rxd1 bxc6 21.Bxc6+ Kf7 22.Be3 Be7 23.Rd7

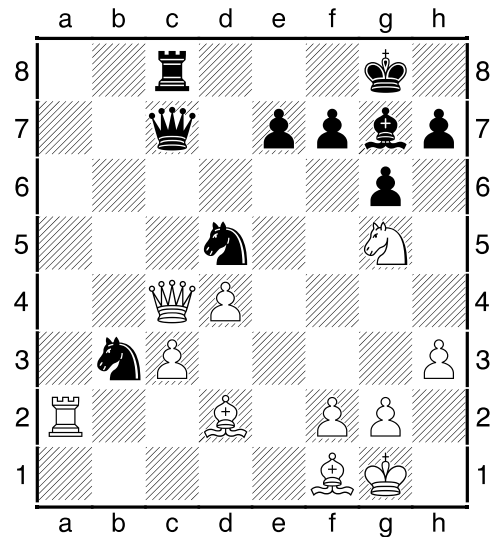


] 9.Qxf3 g6 10.d3!! [In case of 10.Qd1 Black solves His opening problems with the subtle move 10...Bh6] 10...Bg7 11.Be3 0-0 12.Nd2 Nd7 13.Qd1 b5 14.Nf3 Nb6 15.d4

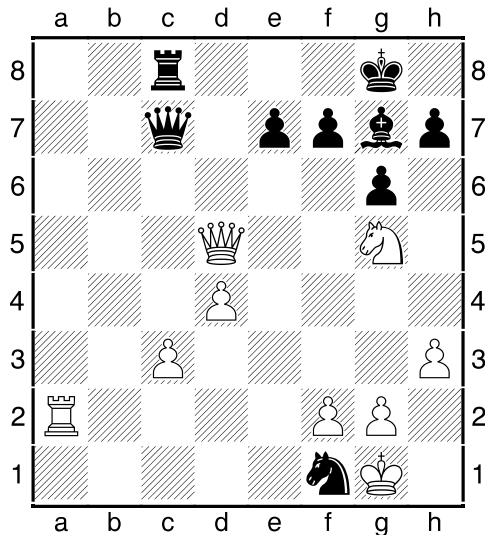


White slowly reinforces His position with simple, leasurable play. At the same time as the Black's counter-play is not observed. 15...Na4 16.Re2 Qa5 17.Rc1 Rad8 18.Rec2 Qc7 19.b3 Nb6 20.a4!

**21.bxa4 c4!** Black seeks to close the position. [The 'brave' 21...Nxa4 conducts only to increased activity of the opponent's pieces. 22.Ra2 Nb6 23.Rxa6] **22.a5** This White's move is haste, which, however, has allowed Him to win quickly [Stronger was the unhurried 22.d5 Na5 23.Rb2 Rb8 24.Nd2 (24.Rcb1) 24...Rb7 (24...Nd7 25.Rb4 Nc5 26.Nxc4 Nxc4 27.Rxc4) 25.Rcb1 Rfb8 26.Qc2 Nd7 27.Rb4 and White has surrounded the c4-pawn.] **22...Nxa5 23.Ra1 Nb3 24.Rxa6 d5 25.exd5 Nxd5 26.Qe2 Na5 27.Bd2** [In the case of hunting on the c4-pawn, Black willingly gives it back, forcing the transition to a drawn ending. 27.Nd2 Ra8 28.Rxa8 Rxa8 29.Nxc4 Nxc4 30.Qxc4 Qxc4 31.Bxc4 Ra1+ 32.Kh2 (32.Bf1 e5!) 32...Nxe3 33.fxe3 Re1 34.Be2 Bh6 35.e4 Rc1=] **27...Ra8 28.Rxa8 Rxa8 29.Ra2 Rc8 30.Ng5 Nb3 31.Qxc4**



**31...Nxd2?** The only serious Karuana's mistake in this game but with fatal consequences. [But it was a great resource in Black's possession: 31...Qb7! , protecting both knights and attacking the rival's Queen. After 32.Qa6 Qxa6 33.Bxa6 Ra8 White Bishop is under unpleasant pin, which allowed Black to easily equalize the game] **32.Qxd5 Nxf1**



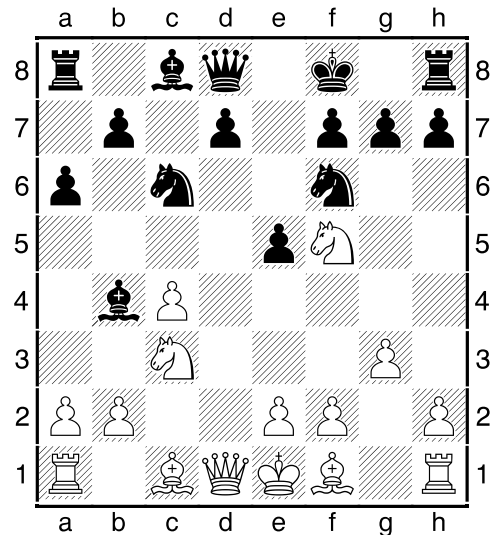
**33.Nxf7!** [33.Qxf7+? Kh8 34.Ne6 Qh2+ 35.Kxf1 Bf6] **33...e6?!** [More stubborn 33...Qc4 leads to unpleasant rook ending without 2 pawns. 34.Nh6+ Kh8 35.Qxc4 Rxc4 36.Ra8+ Bf8 37.Rxf8+ Kg7 38.Rf7+ Kxh6 39.Kxf1 Rxc3 40.Rxe7+-] **34.Qxe6 Rf8 35.Ne5+ Kh8 36.Kxf1 1-0**

**(09) Kamsky,G (2744) - Le Quang Liem (2693) [A31]**

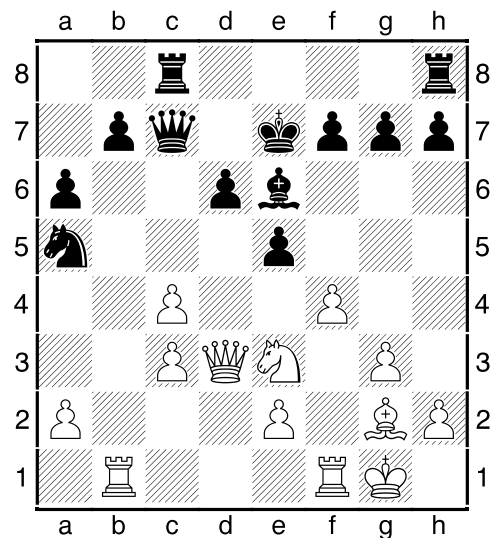
ACP Golden Classic Amsterdam NED (1), 14.07.2012

[IM Iljin, T]

**1.c4 c5 2.Nf3 Nc6 3.d4 cxd4 4.Nxd4 Nf6 5.g3 e5 6.Nb5 Bb4+ 7.N1c3 a6?!** Explicit provocation! Black literally force the rival to invade in 'green point' D6 with check. [More logical and strong is 7...d6 8.a3 Bxc3+ 9.Nxc3 (9.bxc3 0-0 10.Bg5 Qa5 11.Bxf6 gxf6 12.Qxd6 a6 13.Qxf6 Rd8) 9...Be6 10.Bg5 Bxc4 11.Bg2 0-0 12.Rc1 Rc8 13.0-0 Nd4 14.Bxb7 with mutual chances.] **8.Nd6+ Ke7 9.Nf5+ Kf8**

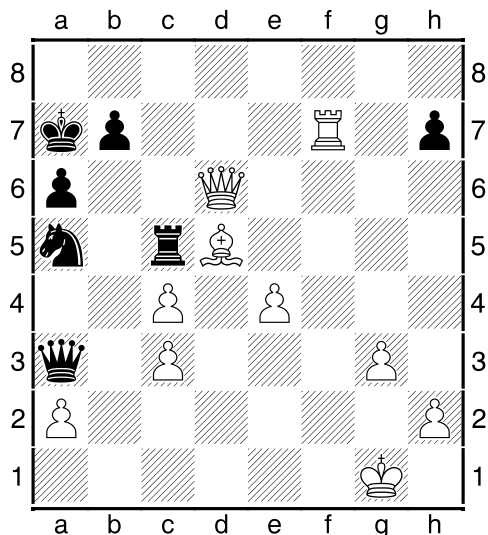


**10.Ne3!** In this type of position the main thing for White is to control the d5-square. **10...Ne4 11.Ned5 Nxc3 12.bxc3 Bc5 13.Bg2 d6 14.Be3** It is useful for White to trade the dark-squared bishops. **14...Bxe3 15.Nxe3 Be6 16.0-0 Ke7** To run with king in the center in the middle of the game – not the best prescription for the health of His Majesty! [He needs to act modestly: 16...Qc7 17.Qd3 Rd8 although here it is certainly pleasant game for White.] **17.Qd3 Rc8 18.Rab1 Qc7 19.f4 Na5**



In such a dangerous position ignoring rival's threats would be too costly for Black. [More stubborn is 19...exf4 20.Nd5+ Bxd5 21.Bxd5 f6 22.gxf4 Kf8±] **20.Nd5+! Bxd5 21.Bxd5 f6 22.Qf5 Qd7 23.Qh5! exf4** [If

23...Qe8 than 24.Qg4 Kf8 25.fxe5 dxe5 26.Rb6! Rc7 27.Qg5 with total smash, which begins on the F6-square.] **24.Rxf4 Rc5 25.Rxf6** Beautiful, but simple final blow! **25...gxf6** [25...Kxf6 26.Rf1+ Ke7 27.Rf7+] **26.Qf7+ Kd8 27.Qxf6+ Kc7 28.Qxh8** Here it's time to give up, but the 'fight' goes on! **28...Qe7 29.e4 Qd7 30.Rf1 Kb6 31.Rf7 Qa4 32.Qd8+ Ka7 33.Qxd6 Qa3**



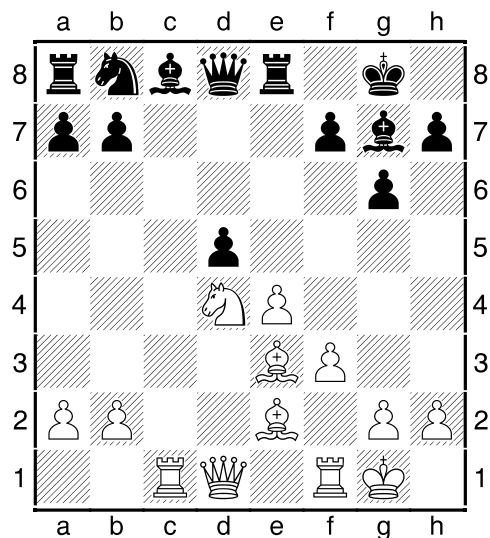
**34.Kg2** [Here I suggest mocking move 34.Rf1 with complete paralysis: 34...h5 35.Rb1] **34...Qxa2+ 35.Kh3 Rc8 36.Qb4 1-0**

**(10) Gustafsson, J (2629) - Kramnik, V (2799) [E94]**

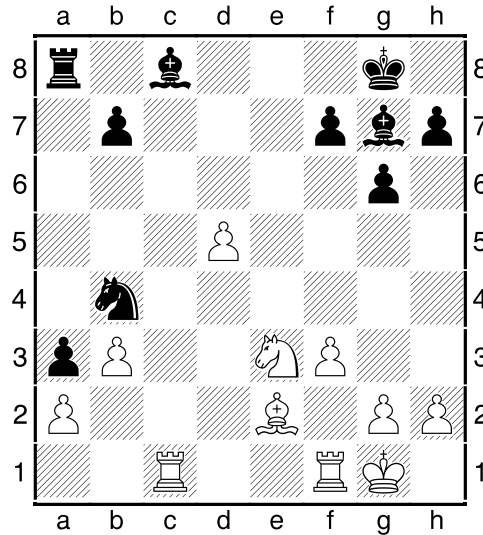
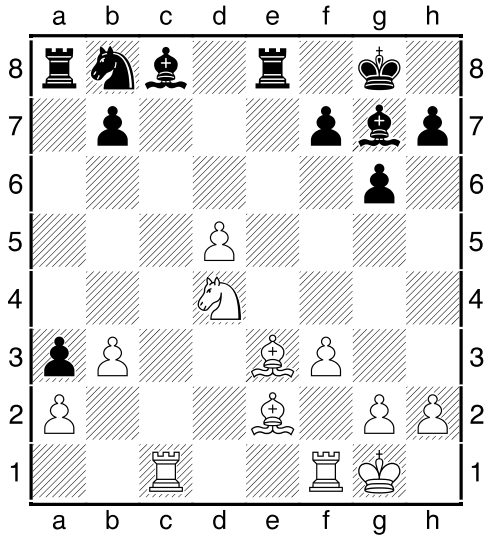
40th GM Dortmund GER (2), 14.07.2012 [IM Iljin, T]

**1.d4 Nf6 2.c4 g6 3.Nc3 Bg7 4.e4 d6 5.Nf3 0-0 6.Be2 e5** So, we had a King's Indian defense on board. You ask, what is so surprising? But very striking is the fact that V. Kramnik, the most ardent opponent of King's Indian, plays it now with black after sixteen years break! **7.Be3** The favourite Gustafsson's option in current position. **7...c6** Another suddenness! It's far from the popular continuations. Black has a big choice here: [7...Ng4; 7...exd4; 7...Qe8; 7...h6 etc.] **8.0-0** [More logical and strong looks 8.d5 It's the right time to capture the space. White makes a move that leads to

the emasculation of the position, counting only on a minimal advantage. ] **8...exd4 9.Nxd4 Re8 10.f3 d5 11.cxd5 Nxd5 12.Nxd5 cxd5 13.Rc1**



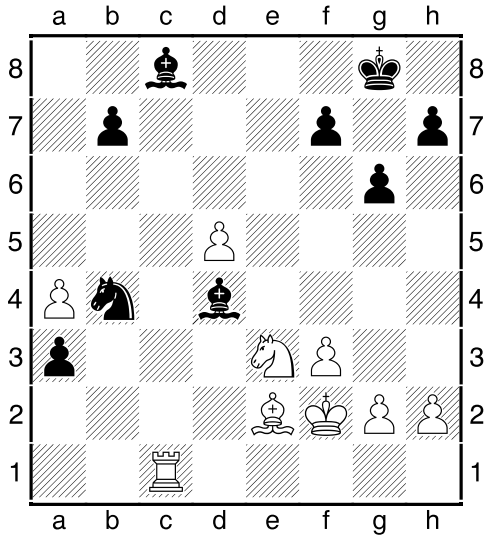
All this has occurred in the practice of Ian several times. He chose here as a text move and the move [13.Qb3 but every time he demonstrates nothing special, and all game ended in a draw.] **13...a5!** Another strong innovation from the home laboratory of the World ex-champion! [White's idea is in event of the natural rival's response – to get the pawn majority on the queenside: 13...Nc6 14.Nxc6 bxc6 15.Rxc6 Bb7 16.Rc1! dxe4 17.Qxd8 Raxd8 18.f4! Bd4 19.Kf2; Simply bad is 13...dxe4? 14.fxe4 Rxe4 because of nice, but simple stroke: 15.Ne6! Qd7 16.Nxg7 Kxg7 17.Qb3 Nc6 18.Bf3 with big advantage.] **14.Qb3** At least it is principle! White intends to have a snack with the central pawn of the opponent. [The other answers do not enhance the White's game: 14.Nb5 Nc6 15.Rc5 dxe4 16.Rd5 exf3 17.Rxd8 Rxd8 18.Qe1 fxe2 19.Qxe2 Bf5; or 14.Bb5 Bd7 15.Rc5 Re5 16.Bd3 dxe4 17.Rxe5 exd3 18.Rc5 Qe7 19.Qc1 Nc6 with comfort situation for Black.] **14...a4 15.Qxd5 Qxd5 16.exd5 a3 17.b3**



**17...Nc6!** Black instantly made the strong and unexpected move – under a several hits – a serious blow to the enemy's mind! [Also possible is 17...Na6 with the same ideas, but the text is stronger!] **18.Nc2!** The best option! Position is very difficult. White must have spent a lot of time to shovel a whole heap of options to find the strongest. [Just blunder is 18.dxc6? Rxe3; Not good is also 18.Nxc6 Rxe3 19.Kf2 Rxe2+ 20.Kxe2 bxc6 Curious is 18.Ne6 but Black has the strong continuation 18...Nb4! (18...Bxe6?! 19.dxc6 bxc6 20.Kf2) 19.Nc7 Nxa2 (19...Rxe3 20.Nxa8 Bf5) 20.Nxe8 Nxc1 21.Rxc1 Bb2 22.Rd1 a2 23.Nd6 a1Q 24.Rxa1 Bxa1 and Black has to win.] **18...Rxe3!** Without giving the slightest respite! **19.Nxe3 Nb4**

**20.Rc4?** At the crucial moment, He does not hold the rook up to the saving square, and the rook stops at the midway! [As it often happens, He can save the game with the active play: 20.Rc7! Bd4 21.Re7 Nxd5 (very complicated is the continuation 21...Nxa2 22.Re8+ Kg7 23.d6 Nc3 24.Bd3 Ra5 (24...a2 25.d7) 25.Rxc8 Bxe3+ 26.Kh1 a2 27.d7 Bb6 28.Ra1 Rd5 29.Rxc3 Bd4 30.Bc4 Bxc3 31.Bxd5 Bxa1 32.d8Q Bd4 33.Qa5 a1Q+ 34.Qxa1 Bxa1 35.Bxb7 but now it is draw.) 22.Re8+ Kg7 23.Kh1 Nxe3 24.Rc1 Nd5 25.Rexc8 Rxc8 26.Rxc8 Nc3 27.Rxc3 Bxc3 , sailing in the 'draw harbor'.] **20...Nxa2! 21.Ra4** That's the idea! White thought that in chance of exchanging the strong a8-rook He can rescue the game. [The option 21.Re4 does not make the White's life easier: 21...Bd7 22.Re7 Nc3 23.Bd3 Bd4 24.Kh1 Bxe3 25.Rxe3 Nxd5 26.Ree1 Nb4; Harder is 21.Nc2 Nc3 22.Bd3 a2 23.Ra1 Kf8] **21...Rxa4 22.bxa4 Bd4 23.Kf2 Nb4! 24.Rc1**





**24...a2!** To give up the bishop with check – the easiest way to victory! **25.Rxc8+ Kg7**  
**26.Rc1 Nxd5 27.Rd1 Nxe3** And White resigned due to **28.Rxd4 a1Q 29.Kxe3 Qg1+** and White unlikely can build some kind of fortress. **0-1**

***Editorial staff:***

IM Timofey Iljin (ELO 2507)  
IM Anatoliy Polivanov (ELO 2356)  
IM Tarlev Konstantin (ELO 2520)  
IM Sergey Perun (ELO 2345)  
Dmitry Posokhov (ELO 2294)

Chief editor **Roman Viliavin** (ELO 2248)  
email: [chesszone@ya.ru](mailto:chesszone@ya.ru)